

Chickasaw Co. Recorder  
 Cindy Messersmith  
**Fee Book 2009-0771**  
 04/17/2009 @12:12PM  
 SCC SEC COR CERT  
 Book: Page: # Pages: 1  
 Total Fees: \$7.00

TeKIPPE ENGINEERING, P.C., 128 South Vine Street, West Union, Iowa 52175 Phone (563) 422-5131

**UNITED STATES PUBLIC LAND SURVEY CORNER CERTIFICATE**

OF

Land Survey Monuments situated in Section 19, Township 95 North, Range 12 West of the Fifth Principal Meridian, Chickasaw County, Iowa.

Previously recorded in (1) Doc. #2004-0476 (2) Doc. #2002-3134 in County Recorder's Office.  
 (book, page, document number, etc.)

(Show reason for preparing this certificate, the evidence and detailed procedures used in establishing the corner positions and monumentation found or placed.)

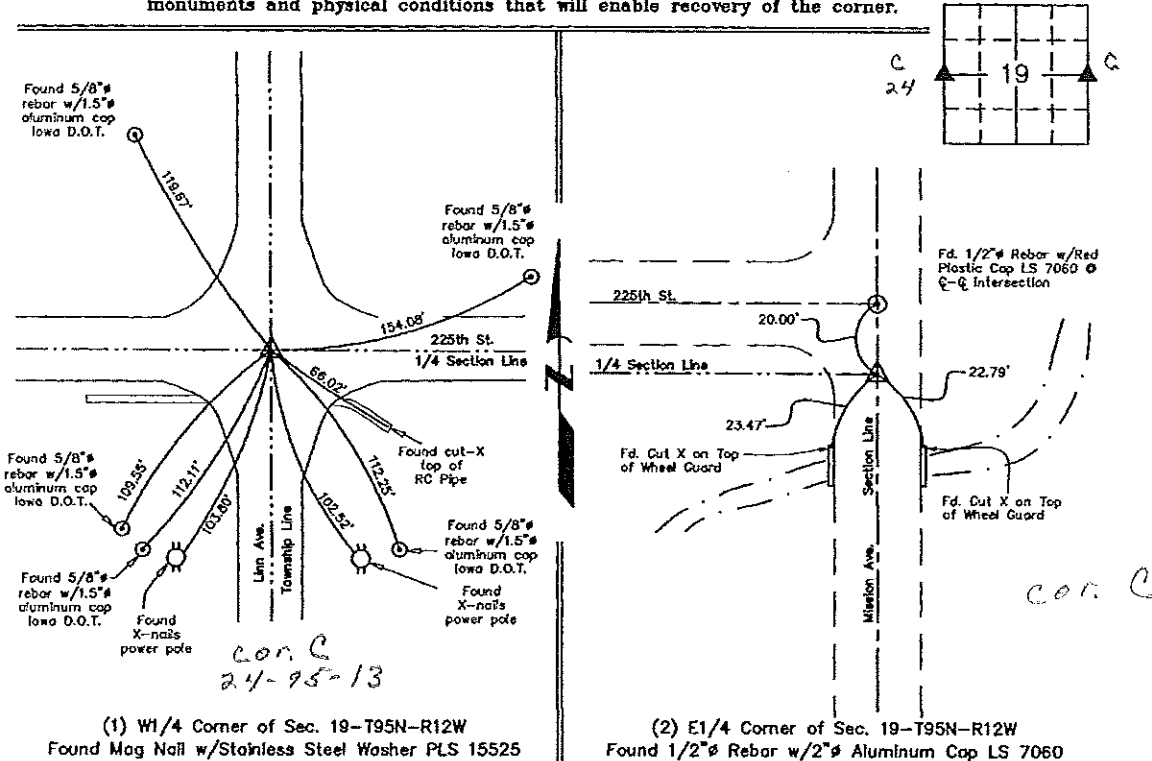
Monument Description and Remarks: (1) W1/4 Corner of Section 19-T95N-R12W:  
 Found mag nail w/stainless steel washer. Updating certificate because only 8 of the 11 recorded ties are remaining.

(2) E1/4 Corner of Section 19-T95N-R12W:  
 Found 1/2" rebar w/2" aluminum cap LS 7060. Updating certificate because only 3 of the 4 recorded ties are remaining.

**PLAN VIEW**

Project Number 091060.LS  
 Field Book: N.H. #2, Page 31

Show a minimum of three reference ties to durable physical objects, relevant monuments and physical conditions that will enable recovery of the corner.



(1) W1/4 Corner of Sec. 19-T95N-R12W  
 Found Mag Nail w/Stainless Steel Washer PLS 15525

(2) E1/4 Corner of Sec. 19-T95N-R12W  
 Found 1/2" Rebar w/2" Aluminum Cap LS 7060

I hereby certify that this land surveying document was prepared and the related survey work was performed by me or under my direct personal supervision and that I am a duly licensed Land Surveyor under the laws of the State of Iowa.

*Lyle G. Tekippe* 4-9-09  
 Lyle G. Tekippe Date

License Number 7060  
 My license renewal date is December 31, 2010.  
 Sheets covered by this seal: Individual

List Corners to be Indexed			
Corners	Section	Twp.	Range
W1/4	19	95N	12W
E1/4	19	95N	12W

X:\Section Corners\Sec. 19\19-95-12KO.dwg

FILED 2002-3134  
 RECORDER'S OFFICE  
 CHICKASAW COUNTY, IOWA  
*fee \$600*  
 2002 DEC 23 AM 10 16  
 CINDY HESSERSMITH  
 COUNTY RECORDER

TeKIPPE ENGINEERING, P.C., 128 South Vine Street, West Union, Iowa 52176 Phone (563) 422-6131

UNITED STATES PUBLIC LAND SURVEY CORNER CERTIFICATE

OF

Land Survey Monuments situated in Section 19, Township 95 North, Range 12 West of the Fifth Principal Meridian, CHICKASAW County, Iowa.  
 Previously recorded in none in County Recorder's Office.  
(book, page, document number, etc.)

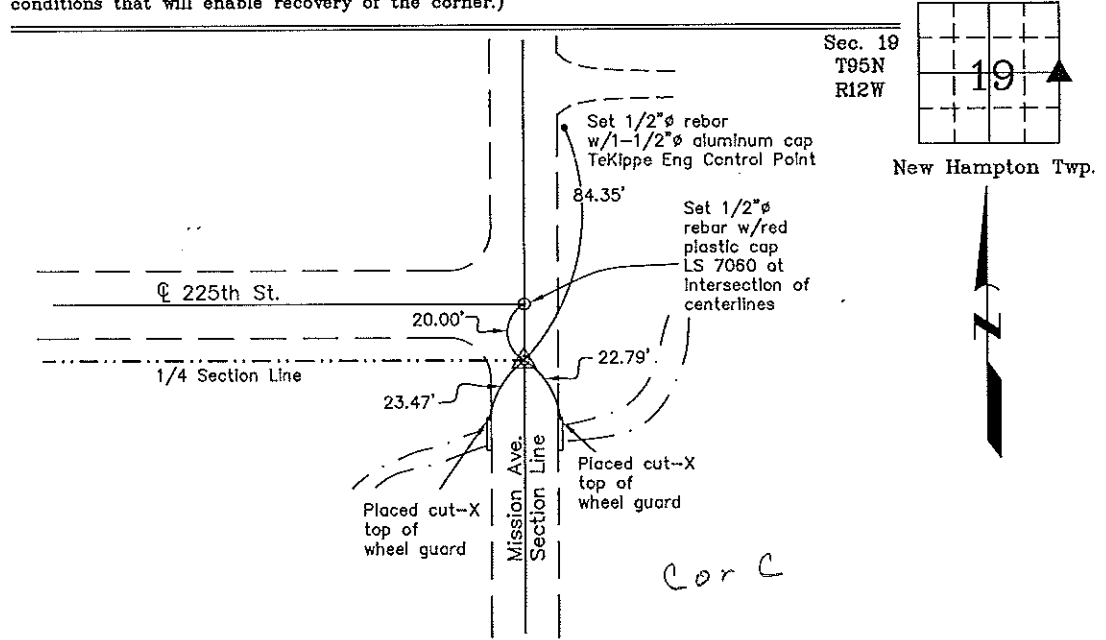
(Show reason for preparing this certificate, the evidence and detailed procedures used in establishing the corner positions and monumentation found or placed.)

Monument Description and Remarks: E 1/4 Corner Section 19 T95N R12W: Set 1/2"Ø rebar w/2"Ø aluminum cap LS 7060 by extending a line from the SE Corner through the centerline of a bridge and intersecting a line extended from the W 1/4 Corner through the apparent Center of the Section.

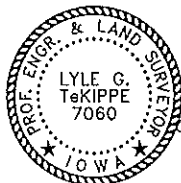
Project Number 00045.LS  
 FB. New Hampton--S.E.L.P.  
 PG. 1--5

PLAN - VIEW

(Show a minimum of three reference ties to durable physical objects, relevant monuments and physical conditions that will enable recovery of the corner.)



E 1/4 Corner Section 19 T95N R12W  
 Set 1/2"Ø rebar w/2"Ø aluminum cap LS 7060



I hereby certify that this land surveying document was prepared and the related survey work was performed by me or under my direct personal supervision and that I am a duly licensed Land Surveyor under the laws of the State of Iowa.  
*Lyle G. TeKippe* 12-20-02  
 Lyle G. TeKippe Date  
 License number 7060  
 My license renewal date is December 31, 2002.  
 Sheets covered by this seal: Individual

List Corners to be Indexed			
Corners	Section	Twp.	Range
E 1/4	19	95N	12W

*Filed 1-03-03*

X:\Section Corners\Sec. 19\19-95-12c.dwg

*County Engineer's Office*