

Filed 2002-0465  
 FILED 2002 - 3133  
 RECORDER'S OFFICE  
 CHICKASAW COUNTY, IOWA  
 2002 DEC 23 AM 10 16  
 CINDY MESSERSMITH  
 COUNTY RECORDER

TeKIPPE ENGINEERING, P.C., 128 South Vine Street, West Union, Iowa 52175 Phone (563) 422-5131

UNITED STATES PUBLIC LAND SURVEY CORNER CERTIFICATE

OF  
 Land Survey Monuments situated in Section 19, Township 95 North, Range  
12 West of the Fifth Principal Meridian, CHICKASAW County, Iowa  
 Previously recorded in none in County Recorder's Office  
(book, page, document number, etc.)

(Show reason for preparing this certificate, the evidence and detailed procedures used in establishing the corner positions and monumentation found or placed.)

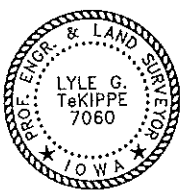
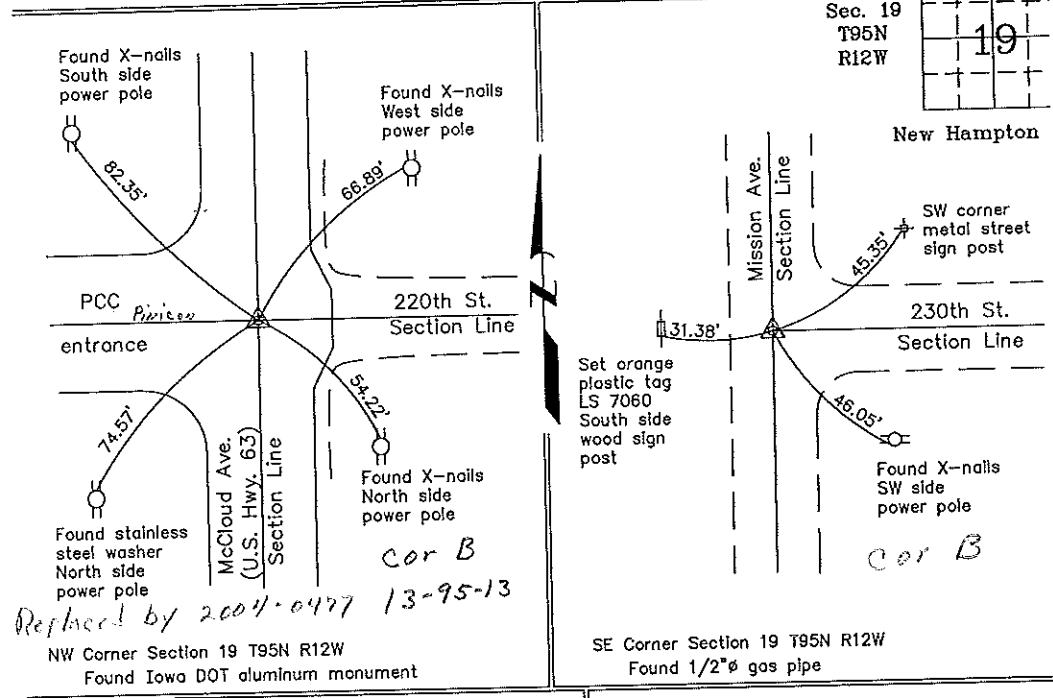
Monument Description and Remarks: NW Corner Section 19 T95N R12W: Found Iowa DOT monument with information obtained from as-built plans for U.S. Highway 63.

SE Corner Section 19 T95N R12W: Found 1/2" gas pipe with information obtained from the Chickasaw County Engineer's Office in the Field Book New Hampton Twp. Corner Ties as Corner 'B', Section 19.

PLAN - VIEW

Project Number 00045  
 FB. New Hampton-S.1  
 PG. 1-5

(Show a minimum of three reference ties to durable physical objects, relevant monuments and physical conditions that will enable recovery of the corner.)



I hereby certify that this land surveying document was prepared and the related survey work was performed by me or under my direct personal supervision and that I am a duly licensed Land Surveyor under the laws of the State of Iowa.

*Lyle G. TeKippe* 12-20-02  
 Lyle G. TeKippe Date  
 License number 7060  
 My license renewal date is December 31, 2002.  
 Sheets covered by this seal: Individual

List Corners to be Indexed			
Corners	Section	Twp.	Range
NW	19	95N	12W
SE	19	95N	12W

Filed 1-03-03  
 X:\Section Corners\Sec. 19\19-95-12ay.dwg

County Engineer's Copy

DOCUMENT No. 02037 FILED FOR RECORD THE 2nd DAY OF May, 1996 AT 8:58 O'CLOCK A. M. BOOK 160 DEEDS PAGE 431 STATE OF IOWA, CHICKASAW COUNTY, Recorder Luther H. Ross Deputy Deirdre Halligan

UNITED STATES PUBLIC LAND SURVEY CORNER CERTIFICATE

OF 13

Land Survey Monuments situated in Section 18, Township 95N, Range 11W, of the Fifth Principal Meridian, CHICKASAW County, Iowa. Previously recorded in \_\_\_\_\_ in County Recorder's Office.

(book, page, document number, etc.)

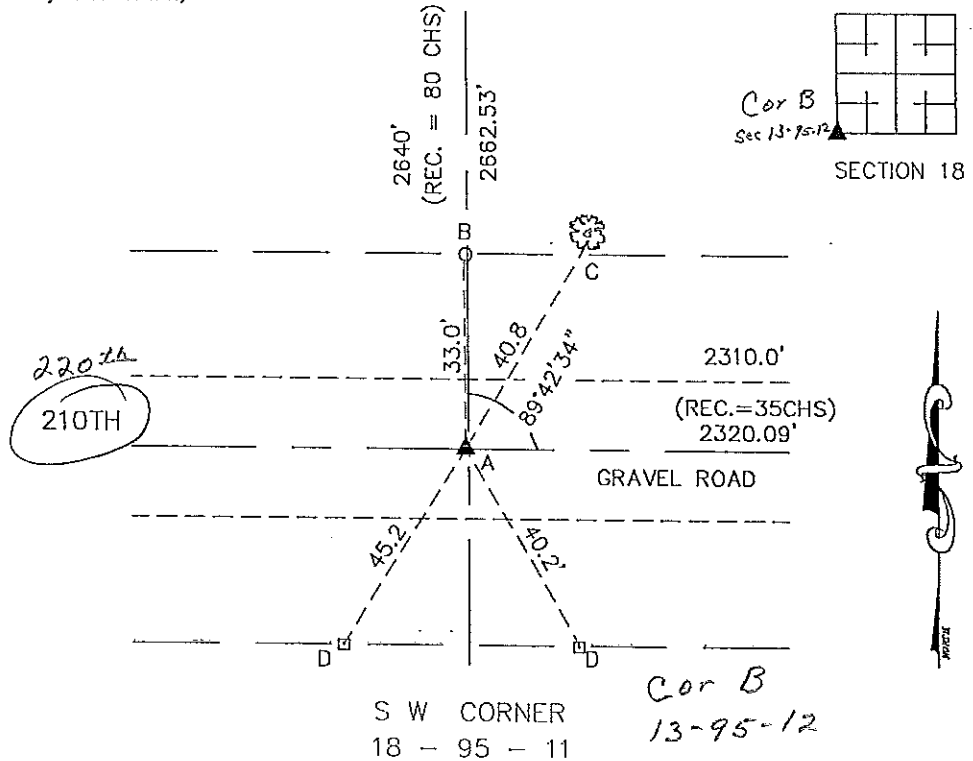
(Show reason for preparing this certificate, the evidence and detailed procedures used in establishing the corner positions and monumentation found or placed.)

Monument Description and Remarks:

- A - 1/2" REBAR w/ CAP # 10793 - RESET FROM COUNTY ENG. RECORDS
- B - REBAR w/ CAP #10793
- C - STUMP OF OLD MAPLE TREE
- D - FENCE CORNER POST

PLAN VIEW

(Show a minimum of three reference ties to durable physical objects, relevant monuments and physical conditions that will enable recovery of the corner.)



Section 13-95-12  
As referred to in  
Engr. Tie Book

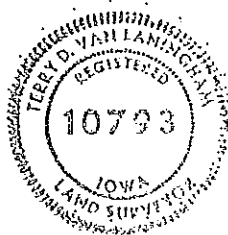
I hereby certify that this land surveying document was prepared by me or under my direct personal supervision and that I am a duly Registered Land Surveyor under the laws of the State of Iowa.

Signature: Terry D. Van Laningham  
Terry D. Van Laningham, PLS

Date: Apr. 30, 1996 Reg. No. 10793

My registration renewal date is December 31, 1997.

SEAL



List Corners to be Indexed

Corners	Section	Township	Range
SW COR.	18	95 N	11 W

TERRY D. VAN LANINGHAM, PLS. INC.  
810 12TH AVE. NW, WAVERLY, IOWA (515) 352-2132