

Prepared by & Return to: Herold - Reicks Surveying, 101 East Main Street, New Hampton, IA 50659, Ph. 641-394-2725

**UNITED STATES PUBLIC LAND SURVEY CORNER CERTIFICATE**

Land Survey Monuments situated in Section ~~18~~, Township **95 North**, Range **12 West** of the Fifth Principal Meridian, **Chickasaw County, Iowa.** 1.) Previously recorded in Bk. 148, Pg. 140 in the County Recorder's office. 2.) Previously recorded in Bk. 151, Pg. 184 in the County Recorder's office.

This certificate is being prepared in compliance with Iowa Code Chapter 355.11 because:

- There is no certificate on file for this corner.
- 2  There are no longer three valid ties of record.
- 1  There are changes to reference ties of record.
- There is change of monumentation of record.
- To clarify description of record monument (ties).

Monument Description and Remarks:

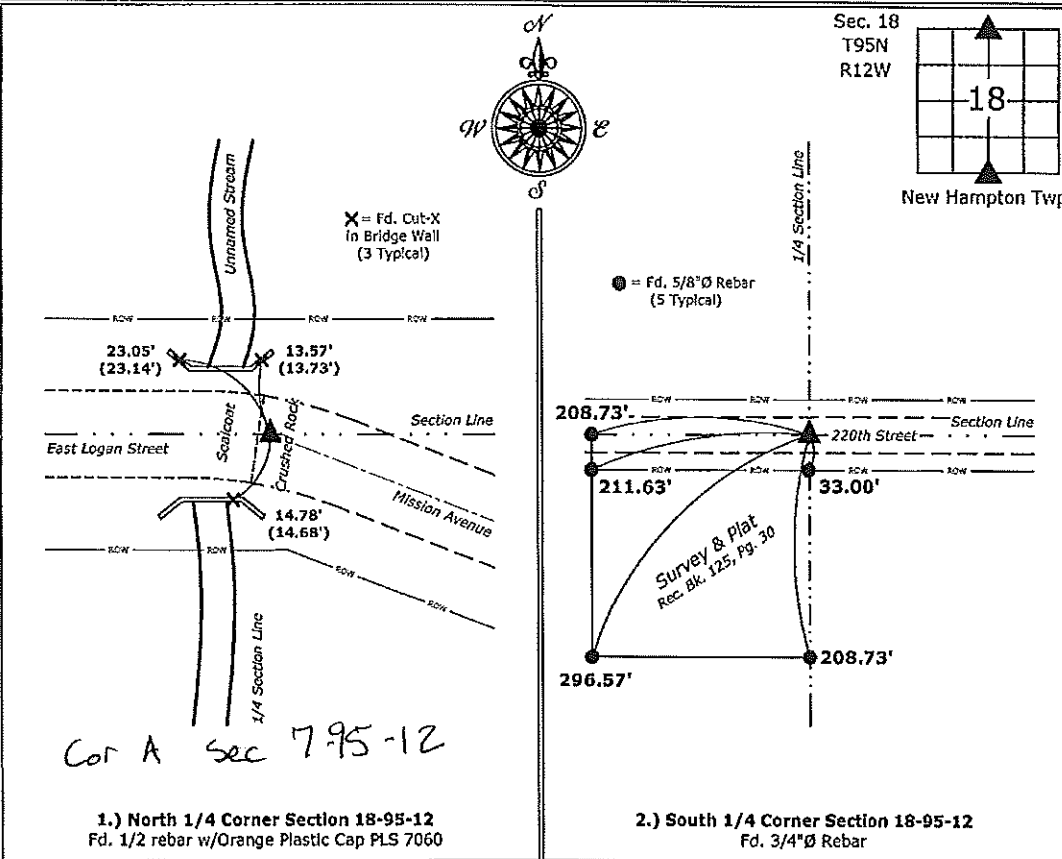
1.) **North 1/4 Corner:** Fd. 1/2 rebar w/Orange Plastic Cap PLS 7060 with information obtained from previous Section Corner Certificate (Bk. 148, Pg. 140).

2.) **South 1/4 Corner:** Fd. 3/4"Ø Rebar with information obtained from previous Section Corner Certificate (Bk. 151, Pg. 184).

Note: This Section Corner Certificate is being prepared to update the older certificates in order to add graphical detail.

**PLAN - VIEW**

(Show a minimum of three reference ties to durable physical objects, relevant monuments and physical conditions that will enable recovery of the corner.)



Cor A sec 7-95-12

1.) North 1/4 Corner Section 18-95-12  
 Fd. 1/2 rebar w/Orange Plastic Cap PLS 7060

2.) South 1/4 Corner Section 18-95-12  
 Fd. 3/4"Ø Rebar



I hereby certify that this land surveying document was prepared and the related survey work was performed by me or under my direct personal supervision and that I am a duly licensed Land Surveyor under the laws of the State of Iowa.  
Paul R. Herold 2-19-15  
 Paul R. Herold Date:  
 License number 15525  
 My license renewal date is December 31, 2016.  
 Sheets covered by this seal: Individual sheet only

List Corners to be Indexed			
Corners	Section	Twp.	Range
N 1/4	18	95	12
S 1/4	18	95	12

Project Number: 2015-027  
 FB: New Hampton 2, Pgs. 28-29

File: S:\\_CED Projects\County Control Systems\CHICKASAW\CHICK-28 (New Hampton)\CHICK-28.dwg, 2/19/2015 9:11:28 AM

# UNITED STATES PUBLIC LAND SURVEY CORNER CERTIFICATE

OF

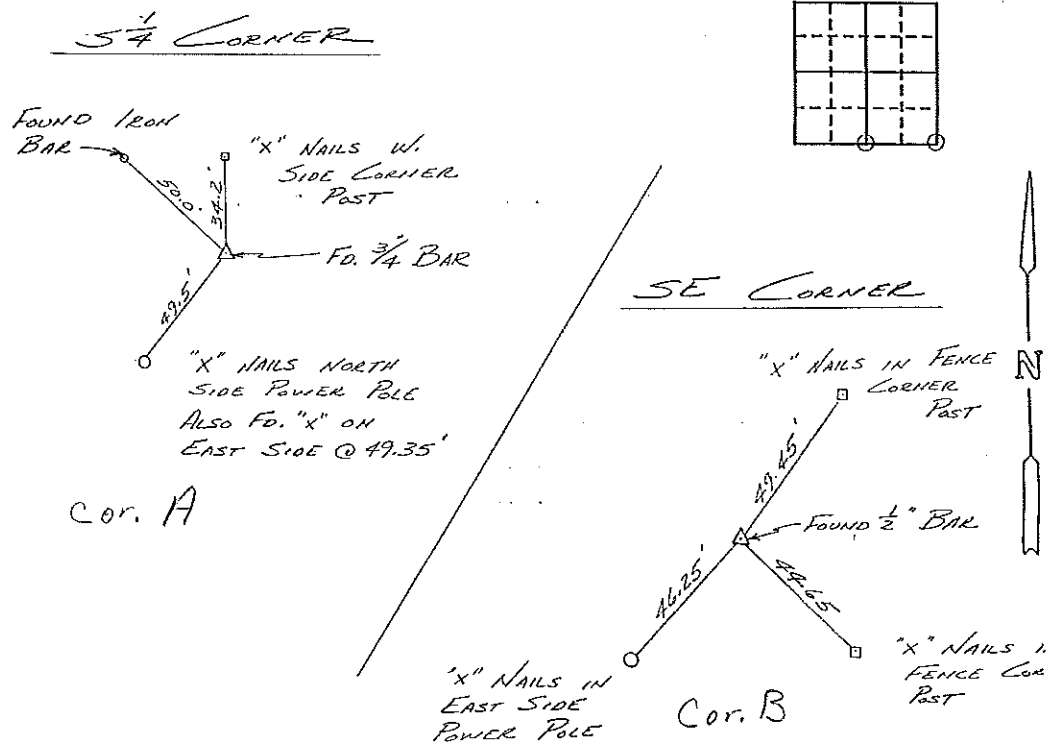
Land Survey Monuments situated in Section 18, Township 95, Range 12, of the Fifth Principal Meridian, CHICKASAW County, Iowa. Previously recorded in NA (book, page, document number, etc.) in County Recorder's Office.

(Show reason for preparing this certificate, the evidence and detailed procedures used in establishing the corner positions and monumentation found or placed.)

Monument Description and Remarks: SEE SKETCH

### PLAN - VIEW

(Show a minimum of three reference ties to durable physical objects, relevant monuments and physical conditions that will enable recovery of the corner.)



I hereby certify that the survey work was completed and this certificate was prepared by me or under my direct personal supervision and that I am a duly registered land surveyor under the laws of the state of Iowa.

Signature: L. P. Erdman  
Name typed or printed: L. P. ERDMAN  
Date: 2-11-93 Reg. No. 2886

SEAL

Corners	List Corners to be Indexed Section	Twp	Range
✓ 5/4	18	95	12 A
SE	18	95	12 B

Placed in file  
2/22/93