

Prepared by & Return to: Herold - Reicks Surveying, 10 East Main Street, New Hampton, IA 50659, Ph. 641-394-2725

CORRECTIVE UNITED STATES PUBLIC LAND SURVEY CORNER CERTIFICATE

Land Survey Monuments situated in Section **19**, Township **95** North, Range **12** West of the Fifth Principal Meridian, **Chickasaw** County, Iowa. **1.)** Previously recorded in Bk. 151, Pg. 184 in the County Recorder's office. **2.)** Not previously recorded in the County Recorder's office.

This certificate is being prepared in compliance with Iowa Code Chapter 355.11 because:



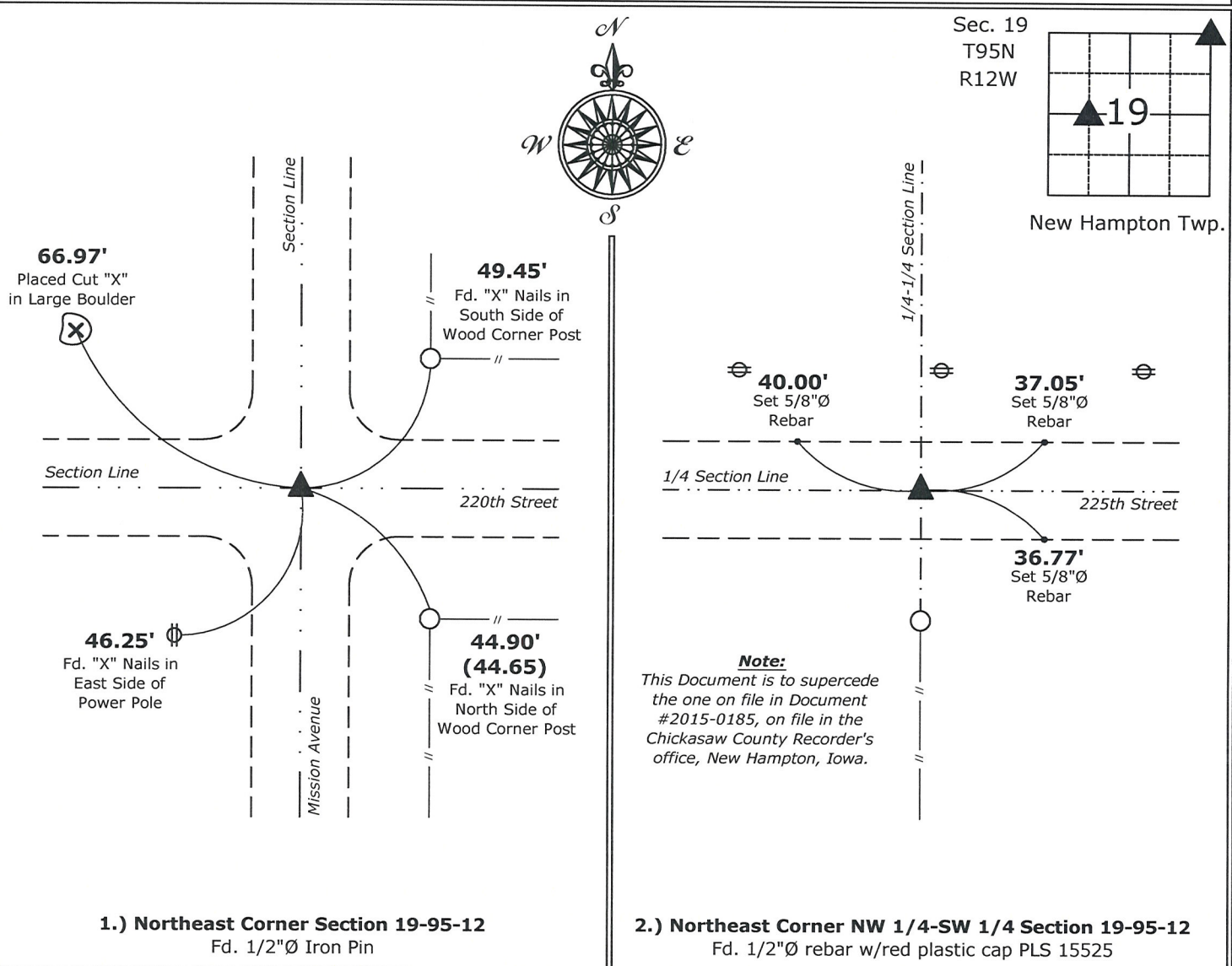
- 2 There is no certificate on file for this corner.
- There are no longer three valid ties of record.
- 1 There are changes to reference ties of record.
- There is change of monumentation of record.
- To clarify description of record monument (ties).

Monument Description and Remarks:

- 1.) Northeast Corner:** Fd. 1/2"Ø Iron Pin with information obtained from previous Section Corner Certificate, updating ties and graphical representation.
- 2.) Northeast Corner NW 1/4-SW 1/4:** Fd. 1/2"Ø Rebar w/Red Plastic Cap PLS 15525, the Southeast Corner of the Fractional Southwest Quarter of the Southwest Quarter of said Section was established on a Survey in Section 30, recorded in Book 172, Page 53, the following Surveys and Plats of Parcel B, Parcel C, and Johnson's Addition in Section 19, recorded as Documents #2004-1065, #2005-0560, and #2005-0583 respectively, utilized this position in conjunction with portions of an existing fence line and the Northerly extension thereof. Boundary agreements between landowners in the Fractional Southwest Quarter were prepared with the Surveys of Parcel B and C and Johnson's Addition to validate the East Lines of said Surveys and the West Lines of the adjacent owners. In the process of a recent Survey in Section 19, after the subsequent accepted line was established, it was determined that the Northeast Corner of Parcel C is in fact the Northeast Corner of the Fractional Northwest Corner of the Southwest Corner of Section 19.

PLAN - VIEW

(Show a minimum of three reference ties to durable physical objects, relevant monuments and physical conditions that will enable recovery of the corner.)



I hereby certify that this land surveying document was prepared and the related survey work was performed by me or under my direct personal supervision and that I am a duly licensed Land Surveyor under the laws of the State of Iowa.

Paul R. Herold 2-23-15
Paul R. Herold Date:
License number 15525
My license renewal date is December 31, 2016.
Sheets covered by this seal: Individual sheet only

List Corners to be Indexed			
Corners	Section	Twp.	Range
NE	19	95	12
NE-NW-SW	19	95	12
Project Number: 2015-027			
FB: New Hampton 2, Pgs. 28-29			

Prepared by & Return to Herold - Reicks Surveying, 10 East Main Street, New Hampton, IA 50659, Ph. 641-994-2725

UNITED STATES PUBLIC LAND SURVEY CORNER CERTIFICATE

Land Survey Monuments situated in Section 19, Township 95 North, Range 12 West of the Fifth Principal Meridian, Chickasaw County, Iowa. 1.) Previously recorded in Bk. 151, Pg. 184 in the County Recorder's office. 2.) Not previously recorded in the County Recorder's office.

This certificate is being prepared in compliance with Iowa Code Chapter 355.11 because:

- 2 There is no certificate on file for this corner.
- There are no longer three valid ties of record.
- 1 There are changes to reference ties of record.
- There is change of monumentation of record.
- To clarify description of record monument (ties).

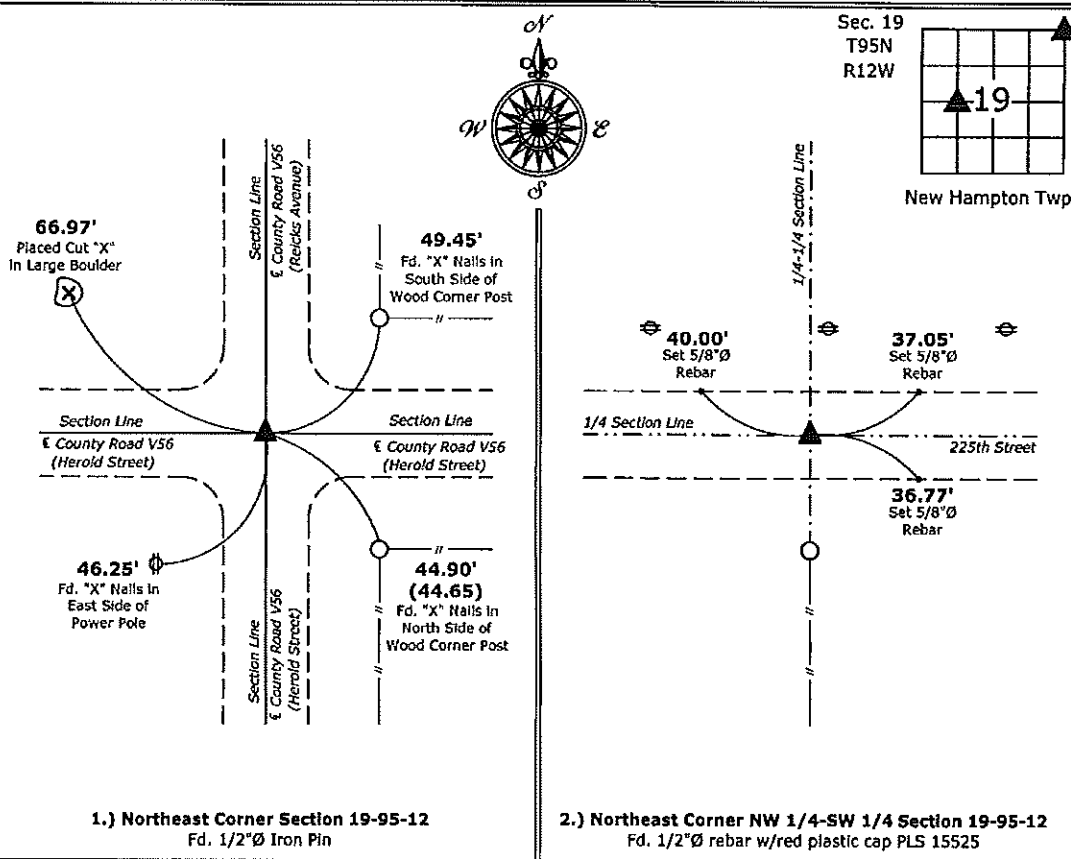
Monument Description and Remarks:

1.) **Northeast Corner:** Fd. 1/2"Ø Iron Pin with information obtained from previous Section Corner Certificate, updating ties and graphical representation.

2.) **Northeast Corner NW 1/4-SW 1/4:** Fd. 1/2"Ø Rebar w/Red Plastic Cap PLS 15525, the Southeast Corner of the Fractional Southwest Quarter of the Southwest Quarter of said Section was established on a Survey in Section 30, recorded in Book 172, Page 53, the following Surveys and Plats of Parcel B, Parcel C, and Johnson's Addition in Section 19, recorded as Documents #2004-1065, #2005-0560, and #2005-0583 respectively, utilized this position in conjunction with portions of an existing fence line and the Northerly extension thereof. Boundary agreements between landowners in the Fractional Southwest Quarter were prepared with the Surveys of Parcel B and C and Johnson's Addition to validate the East Lines of said Surveys and the West Lines of the adjacent owners. In the process of a recent Survey in Section 19, after the subsequent accepted line was established it was determined that the Northeast Corner of Parcel C is in fact the Northeast Corner of the Fractional Northwest Corner of the Southwest Corner of Section 19.

PLAN - VIEW

(Show a minimum of three reference ties to durable physical objects, relevant monuments and physical conditions that will enable recovery of the corner.)



1.) **Northeast Corner Section 19-95-12**
 Fd. 1/2"Ø Iron Pin

2.) **Northeast Corner NW 1/4-SW 1/4 Section 19-95-12**
 Fd. 1/2"Ø rebar w/red plastic cap PLS 15525



I hereby certify that this land surveying document was prepared and the related survey work was performed by me or under my direct personal supervision and that I am a duly licensed Land Surveyor under the laws of the State of Iowa.

Paul R. Herold 2-19-15
 Paul R. Herold Date:

License number 15525
 My license renewal date is December 31, 2016.
 Sheets covered by this seal: Individual sheet only

List Corners to be Indexed			
Corners	Section	Twp.	Range
NE	19	95	12
NE-NW-SW	19	95	12

Project Number: 2015-027
 FB: New Hampton 2, Pgs. 28-29

Filed 2002-0465
 FILED 2002 - 3133
 RECORDER'S OFFICE
 CHICKASAW COUNTY, IOWA
 2002 DEC 23 AM 10 16
 CINDY MESSERSMITH
 COUNTY RECORDER

TeKIPPE ENGINEERING, P.C., 128 South Vine Street, West Union, Iowa 52175 Phone (563) 422-5131

UNITED STATES PUBLIC LAND SURVEY CORNER CERTIFICATE

OF
 Land Survey Monuments situated in Section 19, Township 95 North, Range
12 West of the Fifth Principal Meridian, CHICKASAW County, Iowa
 Previously recorded in none in County Recorder's Office
(book, page, document number, etc.)

(Show reason for preparing this certificate, the evidence and detailed procedures used in establishing the corner positions and monumentation found or placed.)

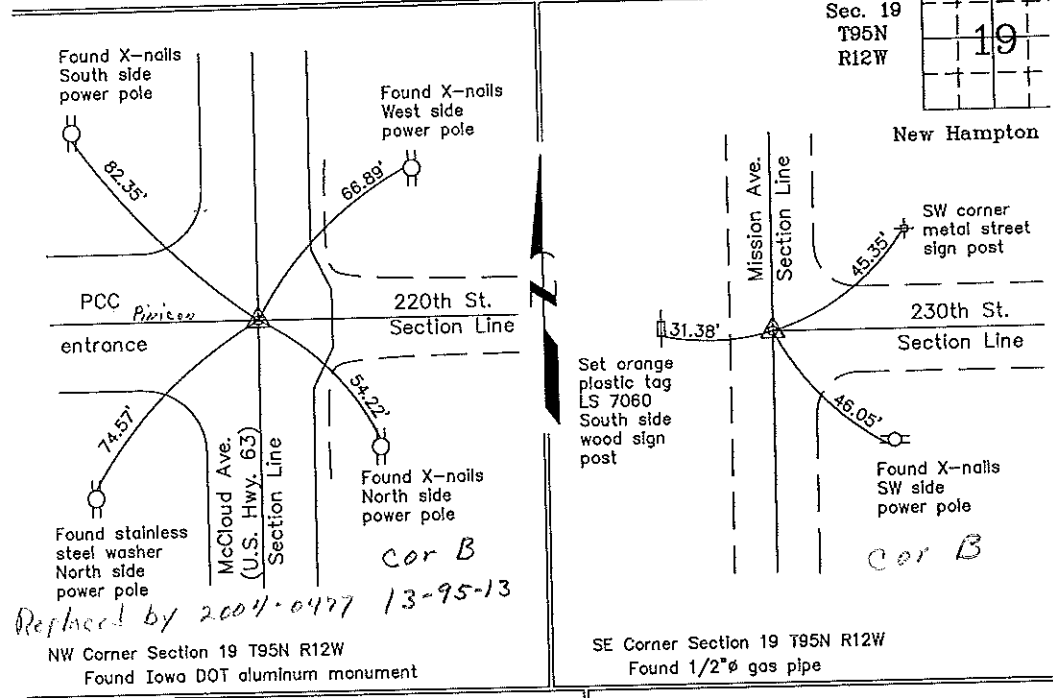
Monument Description and Remarks: NW Corner Section 19 T95N R12W: Found Iowa DOT monument with information obtained from as-built plans for U.S. Highway 63.

SE Corner Section 19 T95N R12W: Found 1/2" gas pipe with information obtained from the Chickasaw County Engineer's Office in the Field Book New Hampton Twp. Corner Ties as Corner 'B', Section 19.

PLAN - VIEW

Project Number 00045
 FB. New Hampton-S.1
 PG. 1-5

(Show a minimum of three reference ties to durable physical objects, relevant monuments and physical conditions that will enable recovery of the corner.)



I hereby certify that this land surveying document was prepared and the related survey work was performed by me or under my direct personal supervision and that I am a duly licensed Land Surveyor under the laws of the State of Iowa.
 Lyle G. TeKippe 12-20-02
 Lyle G. TeKippe Date
 License number 7060
 My license renewal date is December 31, 2002.
 Sheets covered by this seal: Individual

List Corners to be Indexed			
Corners	Section	Twp.	Range
NW	19	95N	12W
SE	19	95N	12W

Filed 1-03-03
 X:\Section Corners\Sec. 19\19-95-12ay.dwg

County Engineer's Copy

UNITED STATES PUBLIC LAND SURVEY CORNER CERTIFICATE

OF

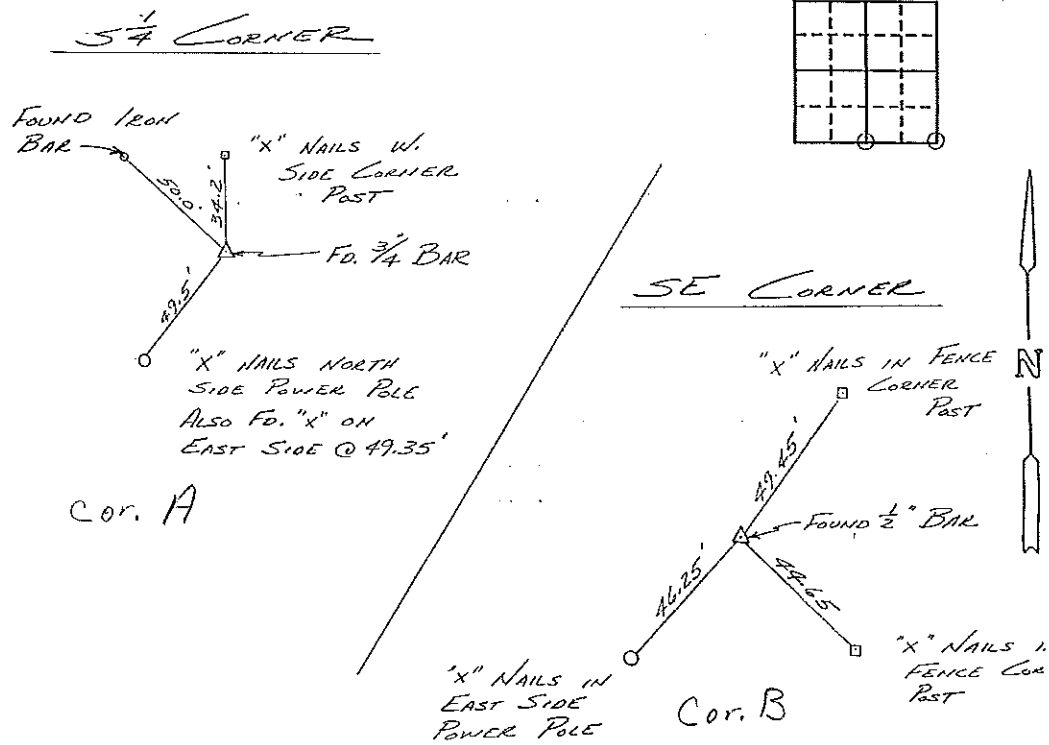
Land Survey Monuments situated in Section 18, Township 95, Range 12 of the Fifth Principal Meridian, Chickasaw County, Iowa. Previously recorded in NA in County Recorder's Office.

(Show reason for preparing this certificate, the evidence and detailed procedures used in establishing the corner positions and monumentation found or placed.)

Monument Description and Remarks: SEE SKETCH

PLAN - VIEW

(Show a minimum of three reference ties to durable physical objects, relevant monuments and physical conditions that will enable recovery of the corner.)



I hereby certify that the survey work was completed and this certificate was prepared by me or under my direct personal supervision and that I am a duly registered land surveyor under the laws of the state of Iowa.

Signature: [Handwritten Signature] Name typed or printed: L. P. ERDMAN Date: 2-11-93 Reg. No. 2886

Table with 4 columns: Corners, Section, Twp, Range. Row 1: 5/4, 18, 95, 12 A. Row 2: SE, 18, 95, 12 B.

Placed in file 2/22/93

SEAL