

Herold - Reckis Surveying, 18 East Main Street, New Hampton, IA 50659, Ph. 641-394-2725, Fax. 641-394-2718

UNITED STATES PUBLIC LAND SURVEY CORNER CERTIFICATE

Land Survey Monuments situated in Section 1, Township 95 North, Range 13 West of the Fifth Principal Meridian, Chickasaw County, Iowa. 1.) Previously recorded in Document #2001-0281 in the County Recorder's office. 2.) Previously recorded in Document #2003-3662 in the County Recorder's office.

This certificate is being prepared in compliance with Iowa Code Chapter 355.11 because:

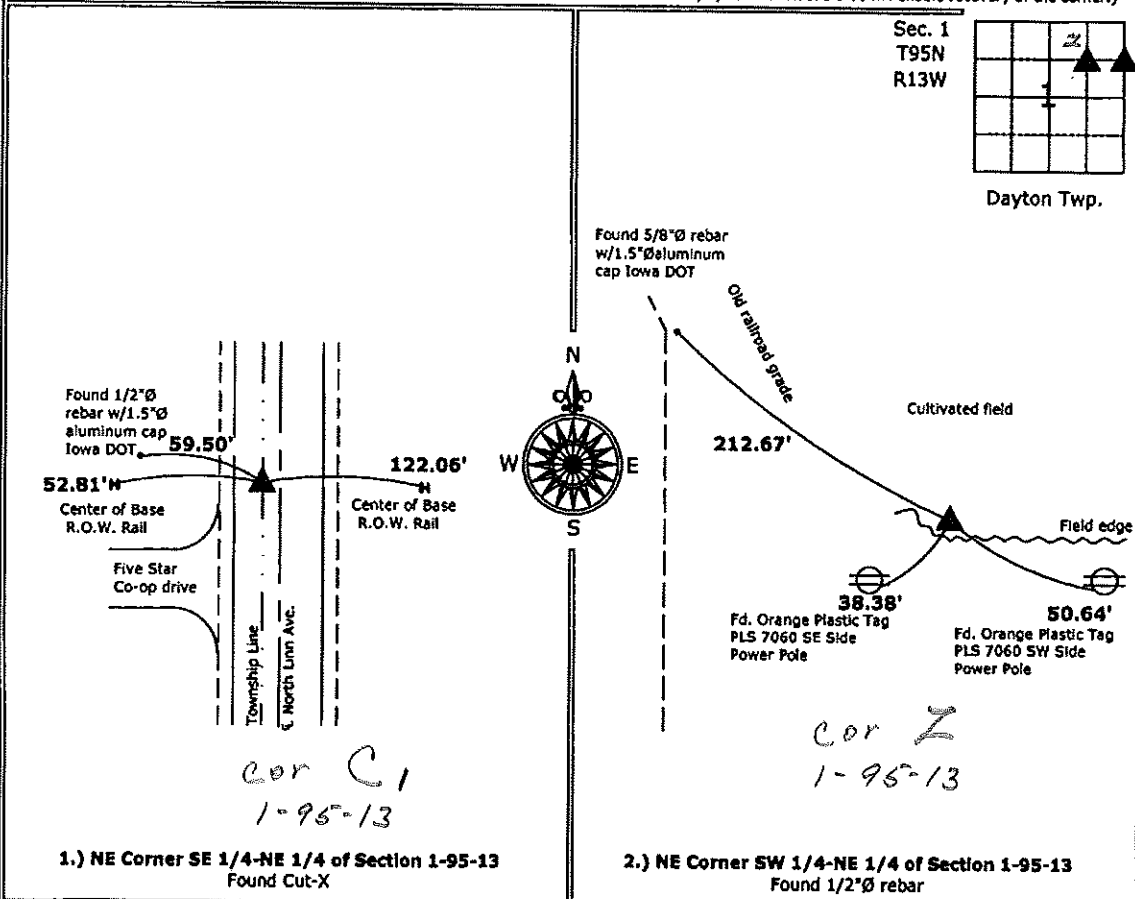
- There is no certificate on file for this corner.
- There are no longer three valid ties of record.
- 1. There are changes to reference ties of record.
- 2. There is change of monumentation of record.
- 2. To clarify description of record monument (ties).

Monument Description and Remarks:

- 1.) **NE Corner SE 1/4-NE 1/4:** Found Cut-X from the previous Corner Certificate, some of the ties were missing, added new ties to update the corner.
- 2.) **NE Corner SW 1/4-NE 1/4:** Found 1/2"Ø rebar matching ties on the previous Corner Certificate, original cap is missing.

PLAN - VIEW

(Show a minimum of three reference ties to durable physical objects, relevant monuments and physical conditions that will enable recovery of the corner.)



1.) **NE Corner SE 1/4-NE 1/4 of Section 1-95-13**
 Found Cut-X

2.) **NE Corner SW 1/4-NE 1/4 of Section 1-95-13**
 Found 1/2"Ø rebar



I hereby certify that this land surveying document was prepared and the related survey work was performed by me or under my direct personal supervision and that I am a duly licensed Land Surveyor under the laws of the State of Iowa.

Paul R. Herold 5-27-10
 Paul R. Herold Date:

License number 15525
 My license renewal date is December 31, 2010.
 Sheets covered by this seal: Individual sheet only

List Corners to be Indexed			
Corners	Section	Twp.	Range
NE-SE-NE	1	95	13
NE-SW-NE	1	95	13

Project Number: 2010-055
 FB: Chickasaw County 2, Pgs. 1-10