

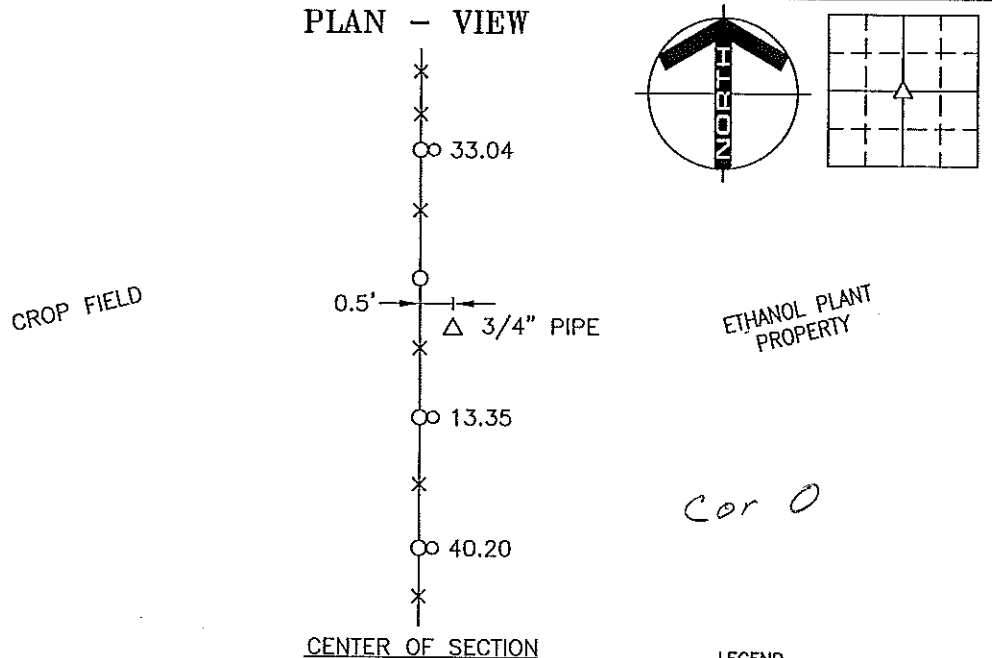
PREPARED BY: DARYL EIFFLER, 215 N ADAMS, MASON CITY, IOWA 50401, 641-424-6344

UNITED STATES PUBLIC LAND SURVEY CORNER CERTIFICATE OF

Land Survey Monuments situated in Section 1, Township 95 NORTH, Range 12 WEST, of the Fifth Principal Meridian, CHICKASAW County, Iowa
Previously recorded in DOES NOT APPLY in County Recorder's Office.
(book, page, document number, etc.)

Monument Description and Remarks: NO CERTIFICATE OF RECORD FOR THIS CORNER.
CENTER OF SECTION - SET 3/4" PIPE WITH A YELLOW PLASTIC CAP STAMPED "PLS 13804",
0.2' EXPOSED AT THE INTERSECTION BETWEEN THE W 1/4 CORNER AND E 1/4 CORNER AND
AND THE N 1/4 CORNER AND THE NE CORNER OF SE 1/4 OF SW 1/4. THE 1/16 CORNER
SOUTH OF THE CENTER WAS A LONG STANDING MONUMENT WHICH WAS FOUND AT THE TIME OF
SURVEY IN BOOK 127, PAGE 82. THIS LOCATION MATCHES THE N-S FENCE, NO E-W FENCES
THROUGH THE CENTER OF SECTION. SET TIES AS SHOWN.

PLAN - VIEW

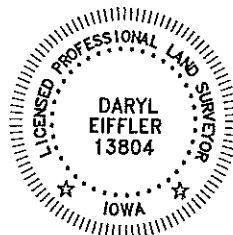


LEGEND

- - UTILITY POLE
- × - EXISTING FENCE, FENCE POST
- ▲ - FOUND LAND CORNER
- △ - SET LAND CORNER
- - FOUND REFERENCE TIE
- - SET REFERENCE TIES ARE A BRASS DISK STAMPED PLS 13804 UNLESS NOTED
- ACC - ASPHALT CEMENT CONCRETE SURFACING
- PCC - PORTLAND CEMENT CONCRETE SURFACING
- SRP - SURVEY REFERENCE POINT
- GR - GRAVEL SURFACING
- YPC - YELLOW PLASTIC CAP
- (00.00) - RECORDED DISTANCE

PROJECT NO. 9635

FILE 951201



I HEREBY CERTIFY THAT THIS LAND SURVEYING DOCUMENT WAS PREPARED AND THE RELATED SURVEY WORK WAS PERFORMED BY ME OR UNDER MY DIRECT PERSONAL SUPERVISION AND THAT I AM A DULY LICENSED PROFESSIONAL LAND SURVEYOR UNDER THE LAWS OF THE STATE OF IOWA.

FOR YAGGY COLBY ASSOCIATES

Daryl Eiffler
DARYL EIFFLER
LICENSE NUMBER 13804

9/26/08
DATE

MY LICENSE RENEWAL DATE IS DECEMBER 31, 2008
SHEETS COVERED BY THIS SEAL: 1

List Corners to be Indexed
Corners

CENTER OF SECTION

Section Twp Range
1 95N 12W

ENGINEERS • ARCHITECTS
SURVEYORS • PLANNERS
LANDSCAPE ARCHITECTS

215 NORTH ADAMS
MASON CITY, IOWA 50401
641-424-6344

