

Instr. Number: 2022-2160  
 Recorded: 12/5/2022 at 3:45:53.0 PM  
 Pages 1  
 County Recording Fee: \$7.00  
 Iowa E-Filing Fee: \$3.00  
 Combined Fee: \$10.00  
 Revenue Tax:  
 Shirley Troyna RECORDER  
 Chickasaw County, Iowa

Prepared by & Return to: Herold - Reicks Surveying, 10 East Main Street, New Hampton, IA 50659, Ph. 641-394-2725

### United States Public Land Survey Corner Certificate

Land Survey Monument situated in  
 Section 1, Township 95 North, Range 12 West of the Fifth Principal Meridian, Chickasaw County, Iowa.  
 Not on file in the County Recorder's Office.

This certificate is being prepared in compliance with Iowa Code Chapter 355.11 because:

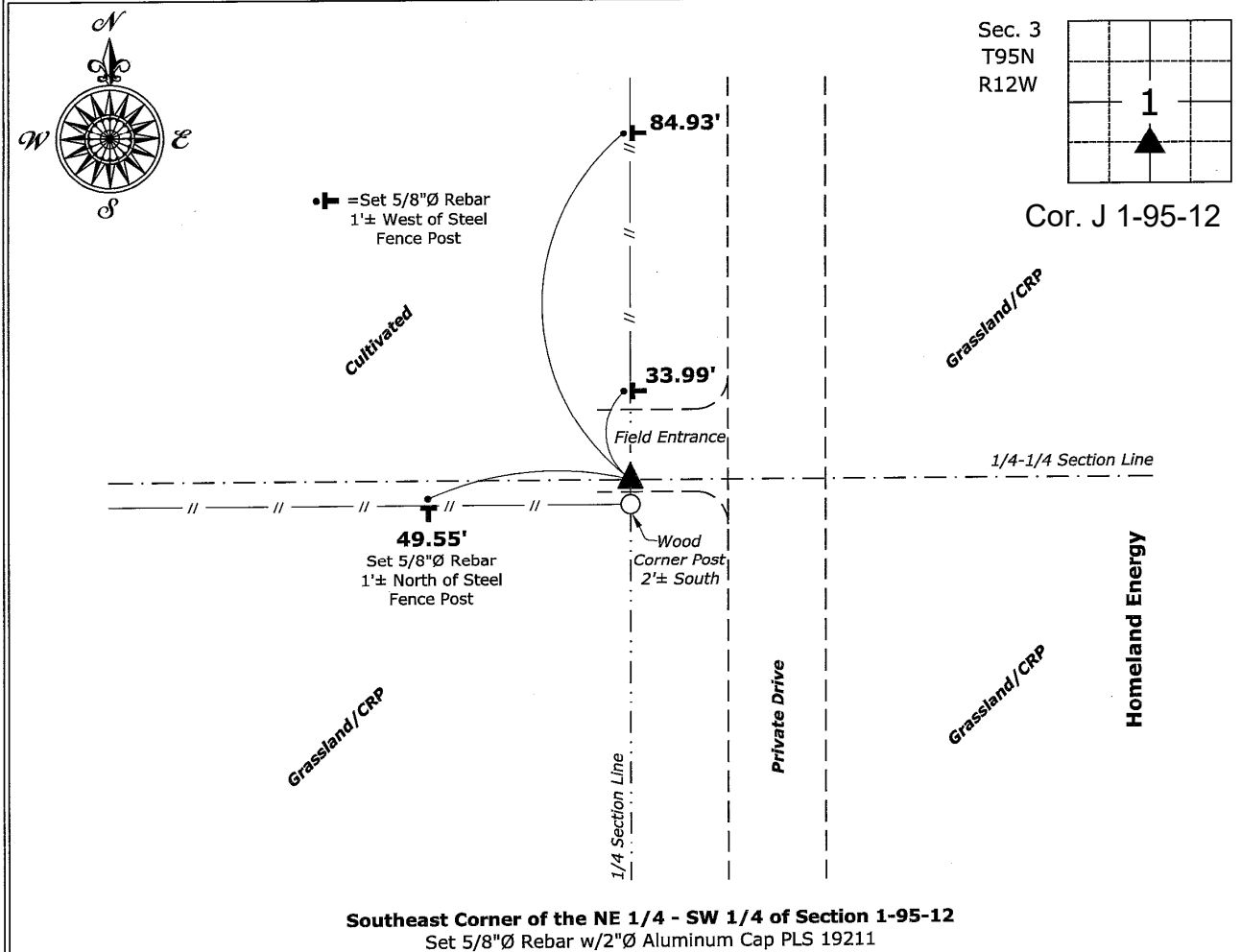
- There is no certificate on file for this corner.
- There are no longer three valid ties of record.
- There are changes to reference ties of record.
- There is change of monumentation of record.
- To clarify description of record monument (ties).

#### Monument Description and Remarks:

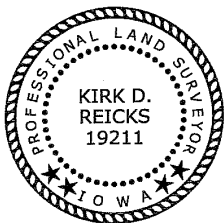
**Southeast Corner of the NE 1/4 - SW 1/4:** Set 5/8"Ø Rebar w/2"Ø Aluminum Cap PLS 19211 with information obtained from a Survey and Plat, as recorded in Document #2007-0335 on file in the County Recorder's Office

### Plan View

(Show a minimum of three reference ties to durable physical objects, relevant monuments and physical conditions that will enable recovery of the corner.)



**Southeast Corner of the NE 1/4 - SW 1/4 of Section 1-95-12**  
 Set 5/8"Ø Rebar w/2"Ø Aluminum Cap PLS 19211



I hereby certify that this land surveying document was prepared and the related survey work was performed by me or under my direct personal supervision and that I am a duly licensed Land Surveyor under the laws of the State of Iowa.

*Kirk D. Reicks* 12-5-2022  
 Kirk D. Reicks Date:

License number 19211  
 My license renewal date is December 31, 2022.  
 Sheets covered by this seal: Individual sheet only

List Corner to be Indexed			
Corner	Section	Twp.	Range
SE-NE-SW	1	95	12

Project Number: 2022-149  
 FB: HES Pipeline, Pgs. 1-2