

Section 36-96-12
 As referred to in
 Engr. Tie Book

PREPARED BY: DARYL EIFFLER, 215 N ADAMS, MASON CITY, IOWA 50401, 641-424-6344

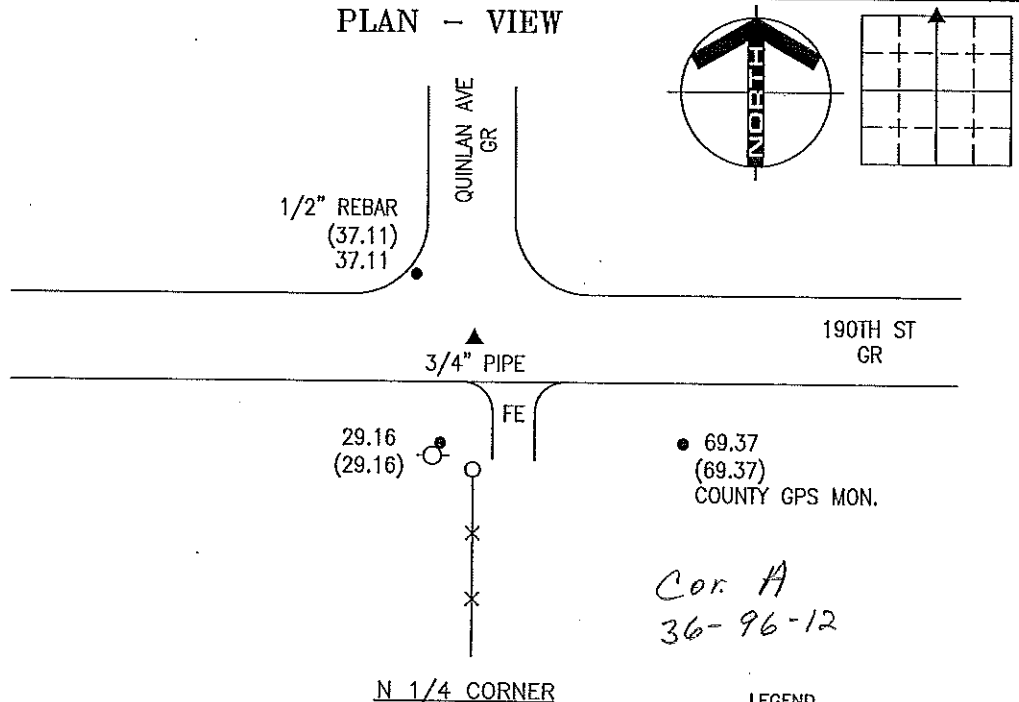
UNITED STATES PUBLIC LAND SURVEY CORNER CERTIFICATE OF

Land Survey Monuments situated in Section 36, Township 96 NORTH, Range 12 WEST, of the Fifth Principal Meridian, CHICKASAW County, Iowa
 Previously recorded in 2008-0087 in County Recorder's Office.
 (document number)

Monument Description and Remarks:

N 1/4 CORNER - FOUND GRANITE STONE 3.5' DOWN INLINE WITH FENCE RUNNING SOUTH. DUG A HOLE WITH ASSISTANCE OF A COUNTY BACKHOE 5' NORTH-SOUTH X 8' EAST-WEST X 5' DOWN AND FOUND NOTHING ELSE. SET 3/4" PIPE WITH YELLOW PLASTIC CAP OVER STONE 0.3' DOWN. RECORDED CERTIFICATE 2008-0087 WAS FILED AFTER MY PLAT OF SURVEY AND PRIOR TO THE RECORDING OF THIS CERTIFICATE. FOUND TIES ARE AS SHOWN.

PLAN - VIEW



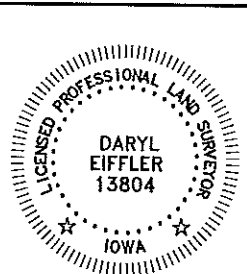
N 1/4 CORNER

LEGEND

- - UTILITY POLE
- × - EXISTING FENCE, FENCE POST
- ▲ - FOUND LAND CORNER
- △ - SET LAND CORNER
- - FOUND RAILROAD SPIKE UNLESS NOTED
- - SET REFERENCE TIES ARE A BRASS DISK STAMPED PLS 13804 UNLESS NOTED
- ACC- ASPHALT CEMENT CONCRETE SURFACING
- PCC- PORTLAND CEMENT CONCRETE SURFACING
- SRP- SURVEY REFERENCE POINT
- GR- GRAVEL SURFACING
- YPC- YELLOW PLASTIC CAP
- (00.00)- RECORDED DISTANCE

PROJECT NO. 9635

FILE 951201



I HEREBY CERTIFY THAT THIS LAND SURVEYING DOCUMENT WAS PREPARED AND THE RELATED SURVEY WORK WAS PERFORMED BY ME OR UNDER MY DIRECT PERSONAL SUPERVISION AND THAT I AM A DULY LICENSED PROFESSIONAL LAND SURVEYOR UNDER THE LAWS OF THE STATE OF IOWA.

FOR YAGGY COLBY ASSOCIATES

Daryl Eiffler 4/14/08
 DARYL EIFFLER DATE
 LICENSE NUMBER 13804

MY LICENSE RENEWAL DATE IS DECEMBER 31, 2008 SHEETS COVERED BY THIS SEAL: 1

List Corners to be Indexed
 Corners Section Twp Range
 N 1/4 01 95N 12W

ENGINEERS • ARCHITECTS
 SURVEYORS • PLANNERS
 LANDSCAPE ARCHITECTS

215 NORTH ADAMS
 MASON CITY, IOWA 50401
 641-424-6344

