

Section 20-95-12
 As referred to in
 Engr Tie Book.

Chickasaw Co. Recorder
 Cindy Messersmith
Fee Book 2007-1434
 07/12/2007 @1012AM
 SCC SEC COR CERT
 Book: Page: # Pages: 1
 Total Fees: \$7.00

Herold - Recks Surveying, 25 1/2 East Main Street, Suite 204, New Hampton, IA 50659, Ph. 641-394-2125

UNITED STATES PUBLIC LAND SURVEY CORNER CERTIFICATE

Land Survey Monuments situated in:
 Section 21, Township 95 North, Range 12 West of the Fifth Principal Meridian,
Chickasaw County, Iowa. Previously recorded in N/A
 In County Recorder's Office. (book, page, document number, etc.)

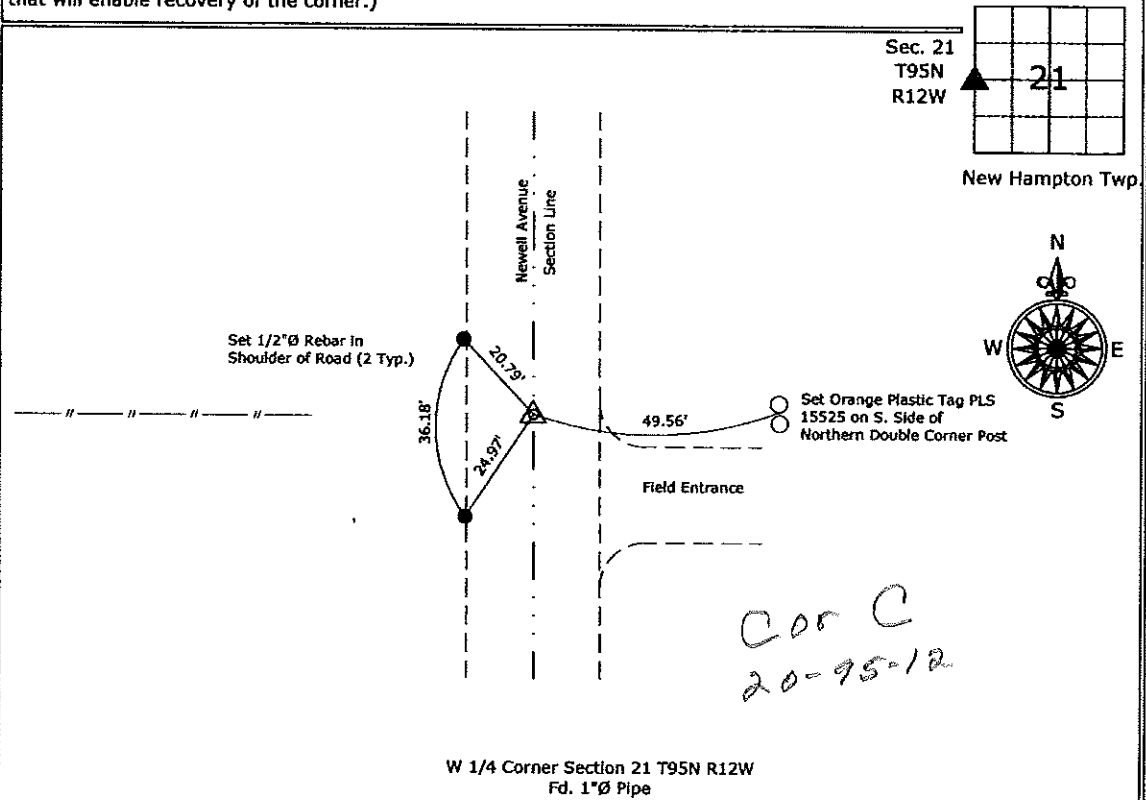
(Show reason for preparing this certificate, the evidence and detailed procedures used in establishing the corner positions and monumentation found or placed.)

Monument Description and Remarks:

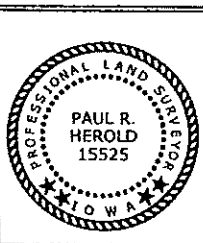
W 1/4 Corner Section 21 T95N R12W: Found 1"Ø Pipe from information obtained from the County Engineer's office in Field Book "New Hampton Twp. Section Ties", Section 20, Corner "C".

PLAN - VIEW

(Show a minimum of three reference ties to durable physical objects, relevant monuments and physical conditions that will enable recovery of the corner.)



W 1/4 Corner Section 21 T95N R12W
 Fd. 1"Ø Pipe



I hereby certify that this land surveying document was prepared and the related survey work was performed by me or under my direct personal supervision and that I am a duly licensed Land Surveyor under the laws of the State of Iowa.

Paul R. Herold 7-12-07

Paul R. Herold Date:

License number 15525

My license renewal date is December 31, 2008.

Sheets covered by this seal: Individual sheet only

List Corners to be Indexed			
Corners	Section	Twp.	Range
W 1/4	21	95	12

Project Number: 2007-070

FB: Chickasaw County 1, Pgs. 30-31