

UNITED STATES PUBLIC LAND SURVEY CORNER CERTIFICATE

Land Survey Monuments situated in Section 21, Township 95 North, Range 12 West, of the Fifth Principal Meridian, Chickasaw County, Iowa.

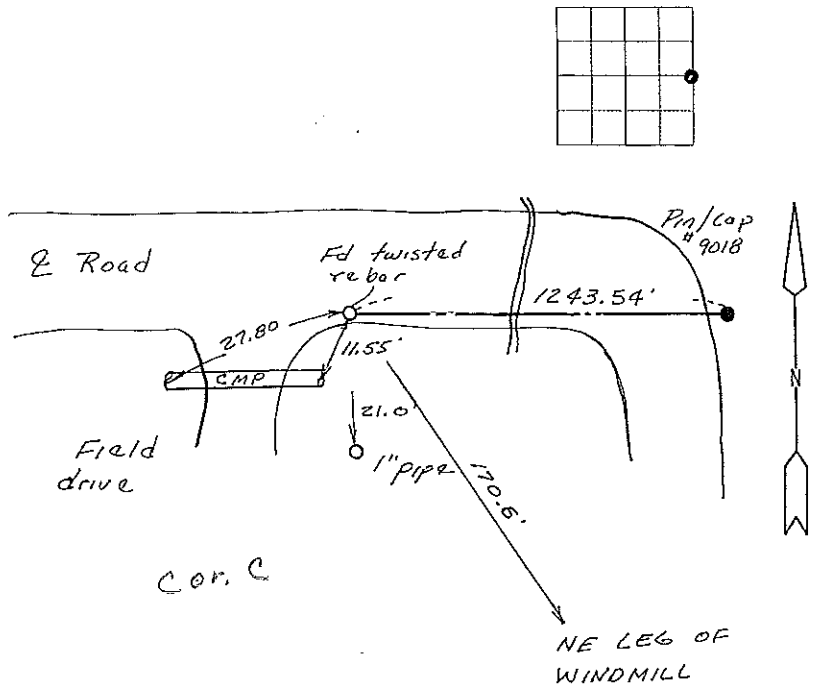
Previously recorded in N/A in County Recorder's Office.
(book, page, document number, etc.)

(Show reason for preparing this certificate, the evidence and detailed procedures used in establishing the corner positions and monumentation found or placed.)

Monument Description and Remarks: Found stone and iron pin per ties from County Engineer. Found at 170.6' from NE leg of windmill. Stone was tipped along with pin. Set upright in position we felt was correct location.

PLAN - VIEW

(Show a minimum of three reference ties to durable physical objects, relevant monuments and physical conditions that will enable recovery of the corner)



I hereby certify that the survey work was completed and this land surveying document was prepared by me or under my direct personal supervision and that I am a duly licensed land surveyor under the laws of the state of Iowa

Signature: Steve Busse
 Name typed or printed STEVE BUSSE

Date: 12/21/99 Reg. No. 9018

My license renewal date is December 31, 2000

SEAL



Corners	List Corners to be Indexed		
	Section	Twp	Range
E 1/4 COR	21	95	12

BOOK 174 PAGE 273

1 DOCUMENT No. 04296

C RECORDING FEE \$ 6.00

S TRANSFER FEE - \$

FILED FOR RECORD THE 29th DAY OF

December 1999 AT 8:39

O'CLOCK A M. BOOK 174 PAGE 273

STATE OF IOWA, CHICKASAW COUNTY.

Cindy Messersmith Recorder

By CINDY MESSERSMITH Deputy