

FILED 2004-0376  
 RECORDER'S OFFICE  
 CHICKASAW COUNTY, IOWA  
 2004 FEB 20 *Fee 11.00* AM 9 04  
 CINDY MESSERSMITH  
 COUNTY RECORDER

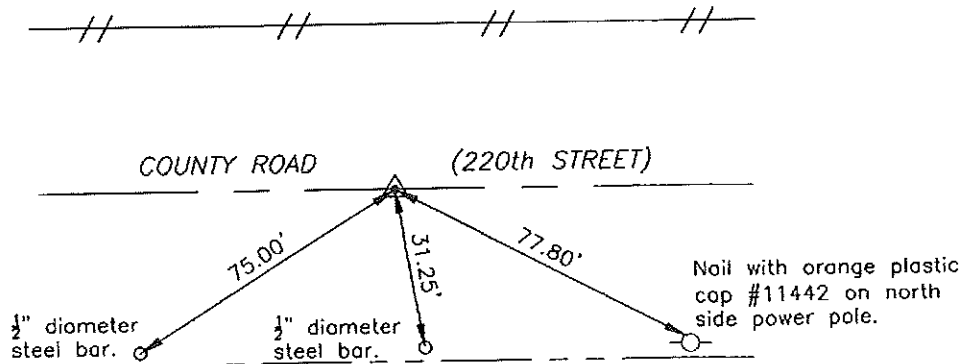
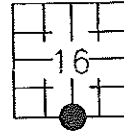
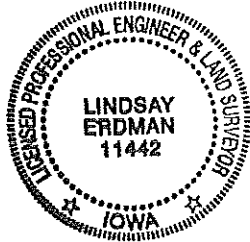
Prepared by: Erdman Engineering, P.C., 708 Commerce Drive, P.O. Box 246, Decorah, Iowa 52101 (563) 382-4194

United States Public Land Survey Corner Certificate  
 of

Land Survey Monuments situated in Section 16, Township 95 North, Range 12 West of the 5th Principal Meridian in Chickasaw County, Iowa. Previously recorded in does not apply in the county Recorder's Office.

Monument Description and Remarks: This certificate is prepared in accordance with Section 193C of the Code of Iowa. No previous certificate has been filed for this corner location. We searched Chickasaw County records and found no record of the S 1/4 Corner being set. We found no evidence of a monument in the field other than a county road (220th Street). We found the SW Corner, SE Corner, Center Section, and a fence corner post at the approximate S 1/4 Corner. We set a 1/2" diameter steel bar with 1 1/2" aluminum cap #11442 on line and equidistant between the SW and SE Corners as the S 1/4 Corner of Section 16, Township 95 North, Range 12 West. This location was also on the extension of a line from the Center Section through the corner post at the approximate S 1/4 Corner.

Plan-View



Cor A

I hereby certify that the survey work was completed and this certificate was prepared by me or under my direct supervision and that I am a duly registered land surveyor under the laws of the State of Iowa.

Signature: *Lindsay Erdman*  
 Lindsay Erdman, P.E. and P.L.S.  
 Date: 2/18/04 Reg. No. 11442

My license renewal date is December 31, 2004

Corner(s) to be Indexed

| Corner | Section | Township | Range |
|--------|---------|----------|-------|
| S 1/4  | 16      | 95N      | 12W   |