

FILED 2004-0380

RECORDER'S OFFICE
CHICKASAW COUNTY, IOWA

2004 FEB 20 ^{Fee 11.00} AM 9 06

CINDY MESSERSMITH
COUNTY RECORDER

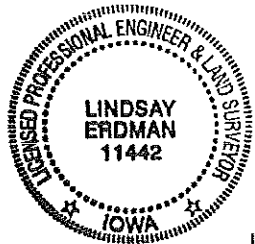
Prepared by: Erdman Engineering, P.C., 708 Commerce Drive, P.O. Box 246, Decorah, Iowa 52101 (563) 382-4194

United States Public Land Survey Corner Certificate

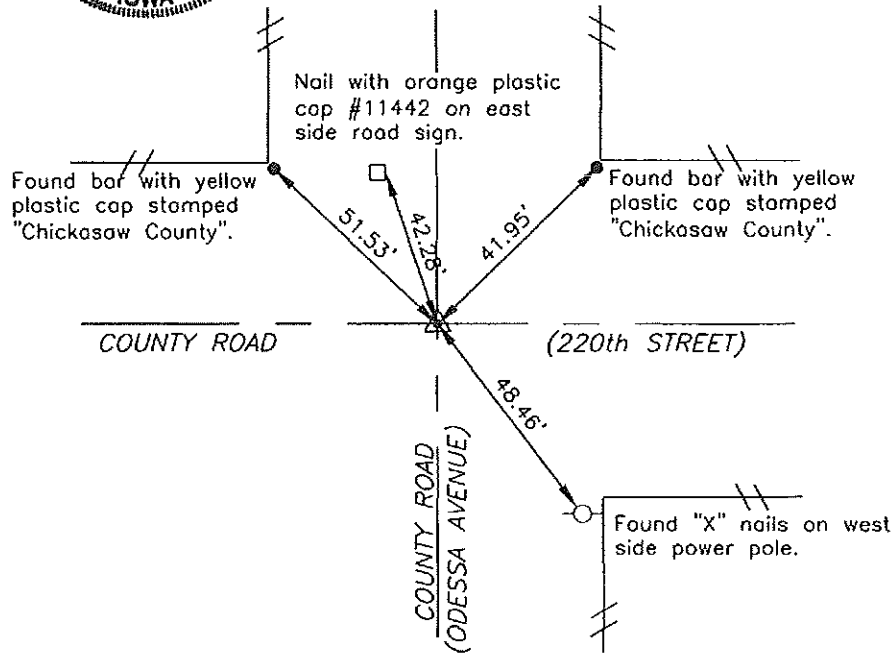
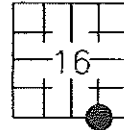
of
Land Survey Monuments situated in Section 16, Township 95 North, Range 12 West
of the 5th Principal Meridian in Chickasaw County, Iowa. Previously recorded in
does not apply in the county Recorder's Office.

Monument Description and Remarks: This certificate is prepared in accordance with
Section 193C of the Code of Iowa. No previous certificate has been filed for this
corner location. Based on Reference Ties found in the Chickasaw County Engineer's
Office and a plat of survey recorded in Book 129, Page 374 in the Chickasaw County
Recorder's Office, we found and accepted a 3/4" diameter steel bar with yellow plastic
cap #7549 as the monument used previously as the SSE 1/8 Corner of Section 16,
Township 95 North, Range 12 West.

Plan-View



Cor A'



I hereby certify that the survey work was completed
and this certificate was prepared by me or under my
direct supervision and that I am a duly registered
land surveyor under the laws of the State of Iowa.

Signature Lindsay Erdman
Lindsay Erdman, P.E. and P.L.S.
Date: 2/18/04 Reg. No. 11442

My license renewal date is December 31, 2004

Corner(s) to be Indexed

Corner	Section	Township	Range
SSE 1/8	16	95N	12W