

DOCUMENT No. **01082** FILED FOR RECORD THE 2nd DAY OF December, 1991 AT 10:20 O'CLOCK A.M. BOOK 148 DEEDS PAGE 249 BY Mary C. Murray RECORD
 RECORDING FEE \$ 5.00 STATE OF IOWA, CHICKASAW COUNTY. MARY C. MURRAY
 TRANSFER FEE \$

UNITED STATES PUBLIC LAND SURVEY CORNER CERTIFICATE

OF

Land Survey Monuments situated in Section 15 16, Township 95, Range 12 WEST, of the Fifth Principal Meridian, CHICKASAW County, Iowa
 Previously recorded in Does Not Apply in County Recorder's Office
(book, page, document number, etc.)

(Show reason for preparing this certificate, the evidence and detailed procedures used in establishing the corner positions and monumentation found or placed.)
 Monument Description and Remarks: _____

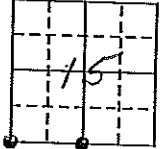
PLAN - VIEW

(Show a minimum of three reference ties to durable physical objects, relevant monuments and physical conditions that will enable recovery of the corner.)

5 1/4 CORNER

FOUND 1" SQUARE
 BAR, SET 1/2" BAR
 W/CAP ABOVE

TOP, BACK SIDE OF STEEL POST
 FOR WARNING BURIED
 CABLE SIGN



115.15'



"X" NAILS EAST END
E OF BRIDGE

"X" NAILS WEST SIDE
POWER POLE

COR A

SW CORNER

FOUND 3/4" BAR
 W/CAP

NAIL EAST SIDE
4" ELM



1/2" BAR AT
FIELD EDGE

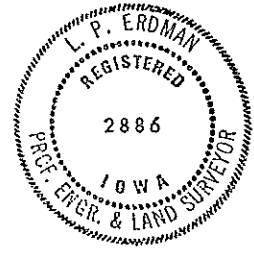
"X" NAILS SOUTH SIDE
POWER POLE

COR B
16-95-12

I hereby certify that the survey work was completed and this certificate was prepared by me or under my direct personal supervision and that I am a duly registered land surveyor under the laws of the state of Iowa.

Signature: [Signature]
 Name typed or printed: L. P. ERDMAN
 Date: 10-29-91 Reg. No. 2886

Corners	List Corners to be Indexed		
	Section	Twp	Range
5 1/4	15	95	12
SW	"	"	"



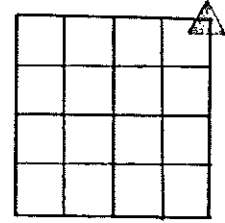
SEAL

Placed in tie Book 12/3

SECTION CORNER RECORD



Section 16-95-12
As referred to in
Eng. Tie Book



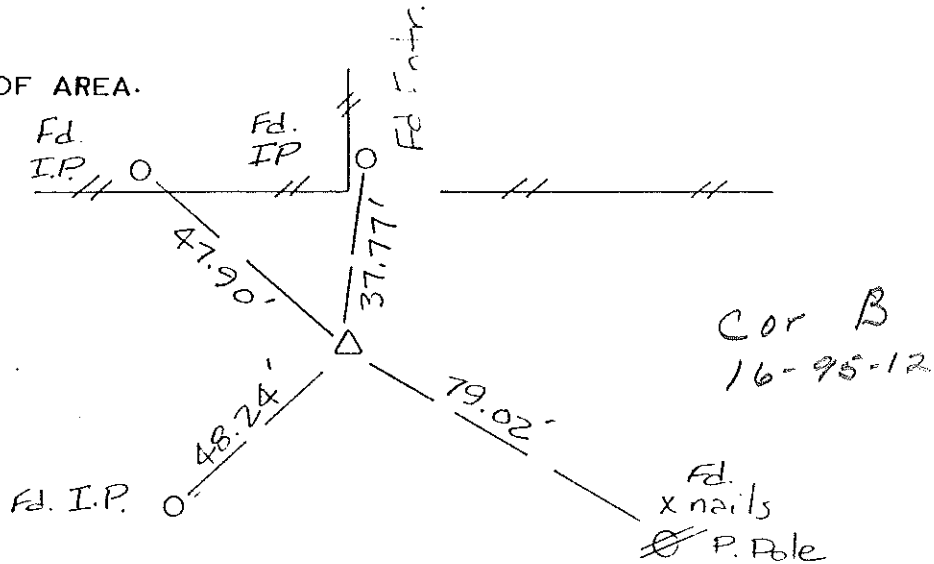
SECTION 21
T95N, R 12W

1. DESCRIPTION OF EVIDENCE FOUND.

Fd Iron Pipe
Fd X nails P. Pole
Fd Rebar w/cap LS 7549 HR Green

2. DESCRIPTION OF MONUMENT SET AND/OR NEW REFERENCE TIES SET.

3. SKETCH OF AREA.



RLS _____ DATE 11 July 84

JENSEN, CARY & SHOFF
CONSULTING ENGINEERS, INC.
(319) 277-1022
MAIN STREET, P.O. BOX 187
BEAR FALLS, IOWA 50613

BK. 3073 pg 1 JT