

FILED 2001-1089
RECORDER'S OFFICE
CHICKASAW COUNTY, IOWA
2001 JUN 4 AM 11 34

CINDY MESSERSMITH
COUNTY RECORDER

STEVE BUSSE P.O. BOX 241 508 ELM STREET ALLISON, IOWA 50602 319-267-2519

UNITED STATES PUBLIC LAND SURVEY CORNER CERTIFICATE

Land Survey Monuments situated in Section 22, Township 95 North, Range 12 West, of the Fifth Principal Meridian, Chickasaw County, Iowa.

Previously recorded in N/A in County Recorder's Office.
(book, page, document number, etc.)

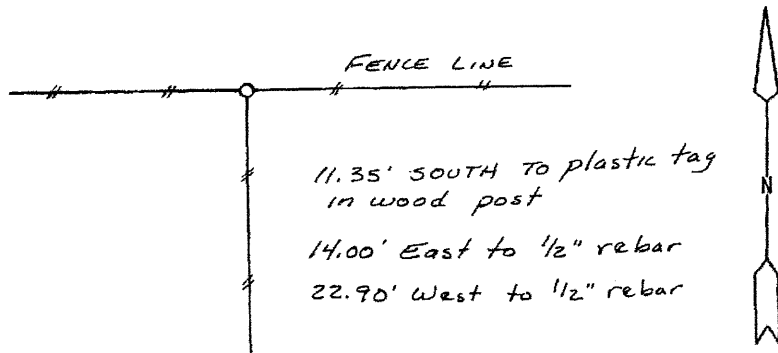
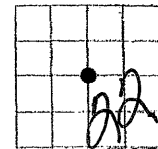
(Show reason for preparing this certificate, the evidence and detailed procedures used in establishing the corner positions and monumentation found or placed.)

Monument Description and Remarks: SET 1/2" rebar with cap #9018 at base of old wood corner post. Post is in line with fence to south and on East and West fence line.

PLAN - VIEW

(Show a minimum of three reference ties to durable physical objects, relevant monuments and physical conditions that will enable recovery of the corner)

Cor. O 22-95-12



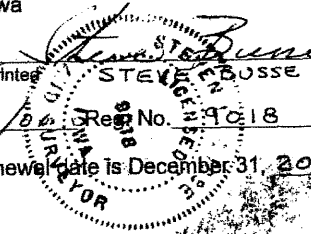
I hereby certify that the survey work was completed and this land surveying document was prepared by me or under my direct personal supervision and that I am a duly licensed land surveyor under the laws of the state of Iowa

Signature: [Handwritten Signature]
Name typed or printed: STEVE BUSSE

Date: 5/30/01 Reg. No. 9018

My license renewal date is December 31, 2002

SEAL



Corners	List Corners to be Indexed		
	Section	Twp	Range
CENTER	22	95	12