

Section 15-95-12  
 As referred to in  
 Engg. Tie Book

FILE NO. 2003-1503  
 BOOK 1000 PAGE 148  
 2003 MAY 15 AM 8:42

CANDY MESSERSMITH  
 CHICKASAW CO. RECORDER

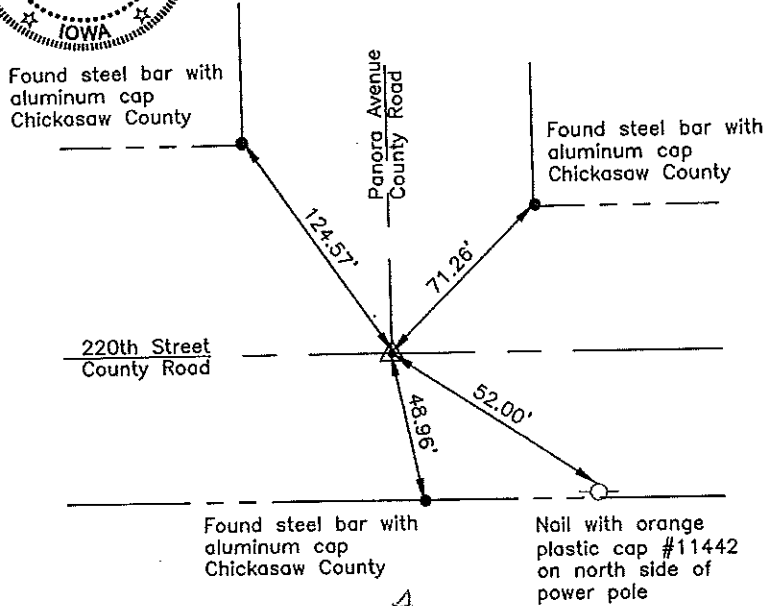
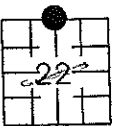
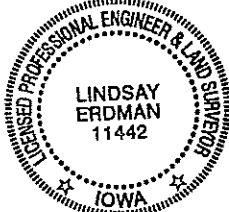
Prepared by: Erdman Engineering, P.C., 708 Commerce Drive, P.O. Box 246, Decorah, Iowa 52101 (563)382-4194

United States Public Land Survey Corner Certificate

of 15  
 Land Survey Monuments situated in Section 22, Township 95 North, Range 12 West  
 of the 5th Principal Meridian in Chickasaw County, Iowa. Previously recorded in  
148 page 249 in the county Recorder's Office.

Monument Description and Remarks: This certificate is prepared in accordance with Section 193C of the Code of Iowa. No previous certificate has been filed for this corner location. Based on previously recorded certificate we searched for the tie markers and monument previously set. We did not find any due to road being recently regraded and the bridge replaced. Based on the plat of survey recorded in Book 2001 page 1558 we found the NE Corner and the ENE  $\frac{1}{8}$  Corner. The recorded bearing and distance from the NE Corner to the ENE  $\frac{1}{8}$  Corner is S 00°05'53" E 1323.03'. From these monuments and the plat of survey we set a  $\frac{1}{2}$ " diameter steel bar with 1  $\frac{1}{2}$ " aluminum cap #11442 at the recorded bearing and distance of S 88°16'55" E 2791.02' from the NE Corner as the N  $\frac{1}{4}$  Corner of Section 22, Township 95 North, Range 12 West.

Plan-View



Cor A  
 15-95-12

I hereby certify that the survey work was completed and this certificate was prepared by me or under my direct supervision and that I am a duly registered land surveyor under the laws of the State of Iowa.

Signature: [Signature]  
 Lindsay Erdman, P.E. and P.L.S.  
 Date: 5/12/03 Reg. No. 11442

My license renewal date is December 31, 2004

Corner(s) to be Indexed

Corner	Section	Township	Range
N 1/4	22	95	12

Filed 8-13-03

DOCUMENT No. **01082** FILED FOR RECORD THE 2nd DAY OF December, 1991 AT 10:20 O'CLOCK A.M. BOOK 148 DEEDS PAGE 249 BY Mary C. Murray RECORD  
 RECORDING FEE \$ 5.00 STATE OF IOWA, CHICKASAW COUNTY. MARY C. MURRAY  
 TRANSFER FEE \$           

**UNITED STATES PUBLIC LAND SURVEY CORNER CERTIFICATE**

OF

Land Survey Monuments situated in Section 15 16, Township 95, Range 12 WEST, of the Fifth Principal Meridian, CHICKASAW County, Iowa  
 Previously recorded in Does Not Apply in County Recorder's Office  
(book, page, document number, etc.)

(Show reason for preparing this certificate, the evidence and detailed procedures used in establishing the corner positions and monumentation found or placed.)  
 Monument Description and Remarks:

---



---



---



---

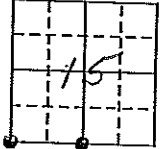
**PLAN - VIEW**

(Show a minimum of three reference ties to durable physical objects, relevant monuments and physical conditions that will enable recovery of the corner.)

5 1/4 CORNER

FOUND 1" SQUARE BAR, SET 1/2" BAR W/CAP ABOVE

TOP, BACK SIDE OF STEEL POST FOR WARNING BURIED CABLE SIGN



115.15'



"X" NAILS EAST END E OF BRIDGE

COR A

"X" NAILS WEST SIDE POWER POLE

SW CORNER

FOUND 3/4" BAR W/CAP

NAIL EAST SIDE 4" ELM



1/2" BAR AT FIELD EDGE

29.00'

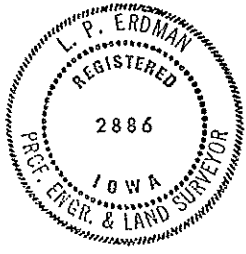
"X" NAILS SOUTH SIDE POWER POLE

COR B  
16-95-12

I hereby certify that the survey work was completed and this certificate was prepared by me or under my direct personal supervision and that I am a duly registered land surveyor under the laws of the state of Iowa.

Signature: [Signature]  
 Name typed or printed: L. P. ERDMAN  
 Date: 10-29-91 Reg. No. 2886

Corners	List Corners to be Indexed		
	Section	Twp	Range
5 1/4	15	95	12
SW	"	"	"



SEAL

*Placed in tie Book 12/3*