

Section 15-95-12  
As referred to in  
Engl. Tie Book

TEKIPPE ENGINEERING, P.C., 128 South Vine Street, West Union, Iowa 52176 Phone (319) 422-5131

UNITED STATES PUBLIC LAND SURVEY CORNER CERTIFICATE

OF 15  
Land Survey Monuments situated in Section 23, Township 95 North, Range 12 West of the Fifth Principal Meridian, CHICKASAW County, Iowa  
Previously recorded in none in County Recorder's Office  
(book, page, document number, etc.)

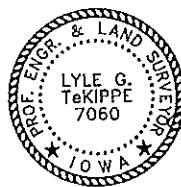
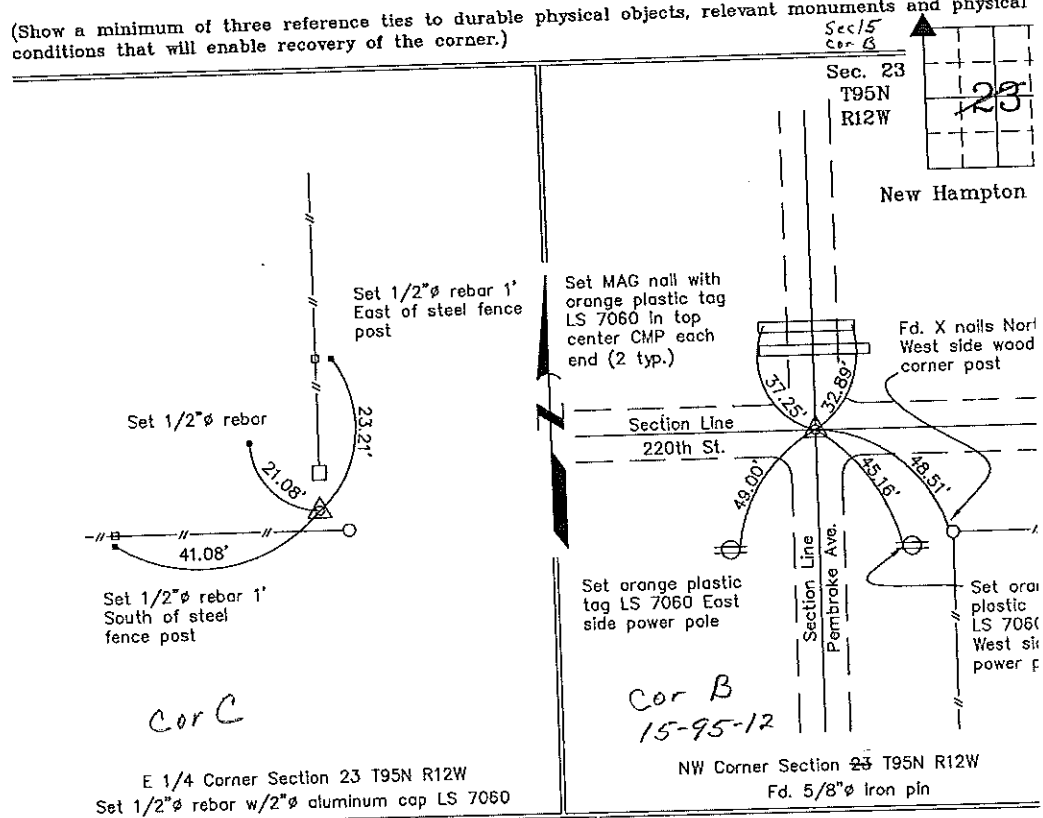
(Show reason for preparing this certificate, the evidence and detailed procedures used in establishing the corner positions and monumentation found or placed.)

Monument Description and Remarks: E 1/4 Corner Section 23 T95N R12W: Set 1/2"Ø rebar with 2"Ø aluminum cap LS 7060. Corner set at existing fence corner after comparing position to adjacent corners in the section.

NW Corner Section 23 T95N R12W: Found 5/8"Ø iron pin. Information obtained from Chickasaw County Engineer's office. Field book "New Hampton Twp." - Corner B of Section 15.

PLAN - VIEW

(Show a minimum of three reference ties to durable physical objects, relevant monuments and physical conditions that will enable recovery of the corner.)



I hereby certify that this land surveying document was prepared and the related survey work was performed by me or under my direct personal supervision and that I am a duly licensed Land Surveyor under the laws of the State of Iowa.

Lyle G. Tekippe 12-15-00  
Lyle G. Tekippe Date  
License number 7060  
My license renewal date is December 31, 2000.  
Sheets covered by this seal: Individual

List Corners to be Indexed			
Corners	Section	Twp.	Range
E 1/4 C	23	95	12
NW B	23 15	95	12

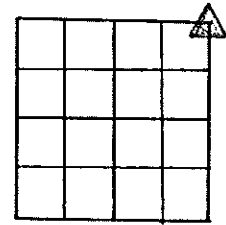
Filed 3-20-01

2000-2238

County Engineer  
Copy

# SECTION CORNER RECORD

Section 15-95-12  
As referred to in  
Engr. Tie Book



15'  
SECTION 22  
T 95 N, R 12 W



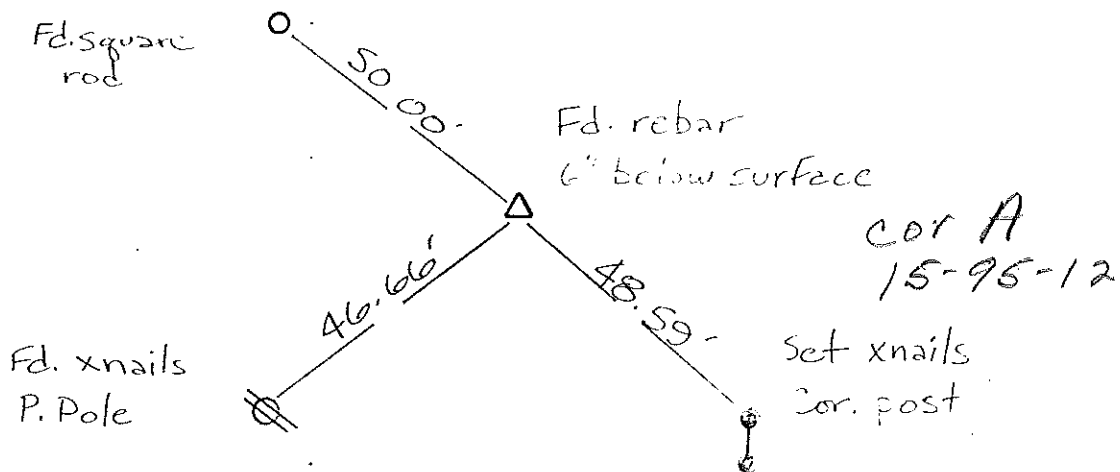
1. DESCRIPTION OF EVIDENCE FOUND.

Fd. sq. rod  
Fd. x nails P. Pole  
Fd. rebar 6" below surface

2. DESCRIPTION OF MONUMENT SET AND/OR NEW REFERENCE TIES SET.

Set x nails Cor. post

3. SKETCH OF AREA.



RLS \_\_\_\_\_ DATE 11 July 84

JENSEN, CARY & SHOFF  
CONSULTING ENGINEERS, INC.  
(319) 277-1022  
108 MAIN STREET, P.O. BOX 187  
CEDAR FALLS, IOWA 50613

Bk. 3073 pg. 2