

CINDY MESSERSMITH
 COUNTY RECORDER

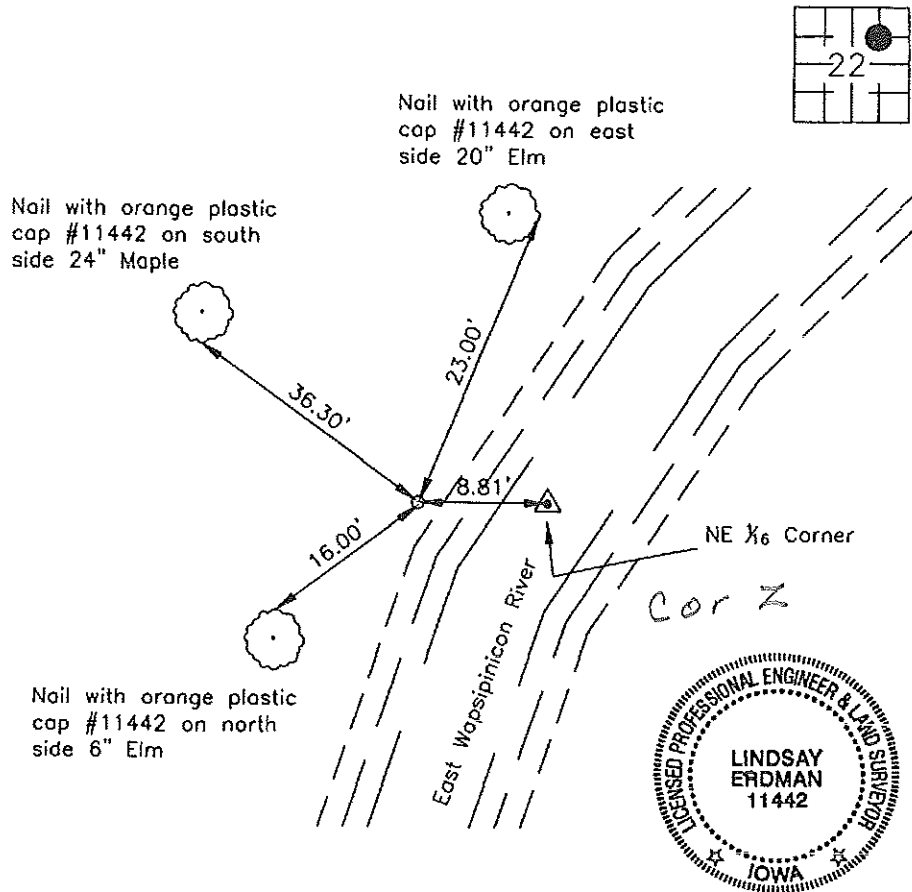
Prepared by: Erdman Engineering, P.C., 708 Commerce Drive, P.O. Box 246, Decorah, Iowa 52101 (563) 382-4194

United States Public Land Survey Corner Certificate
 of

Land Survey Monuments situated in Section 22, Township 95, Range 12 West of the 5th Principal Meridian in Chickasaw County, Iowa. Previously recorded in does not apply in the county Recorder's Office.

Monument Description and Remarks: This certificate is prepared in accordance with Section 193C of the Code of Iowa. No previous certificate has been filed for this corner location. We found no record of the NE $\frac{1}{6}$ Corner being set. We found no evidence of a monument in the field other than the existing fence line running north and west. We found the NE Corner, N $\frac{1}{4}$ Corner, Center Section, and ENE $\frac{1}{8}$ Corner. We set the NNE $\frac{1}{8}$ Corner. We computed the location of the N $\frac{1}{8}$ Corner and the E $\frac{1}{8}$ Corner. Based on these locations we computed the location of the NE $\frac{1}{6}$ Corner at the intersection of the lines from the midpoints of the four sides of the NE Quarter. The location of the NE $\frac{1}{6}$ Corner falls in the East Wapsipinicon River. We set a $\frac{1}{2}$ " diameter steel bar with yellow plastic cap #11442 as a reference point on the line between the NE $\frac{1}{6}$ Corner and the N $\frac{1}{8}$ Corner on the high water bank on the river.

Plan-View



I hereby certify that the survey work was completed and this certificate was prepared by me or under my direct supervision and that I am a duly registered land surveyor under the laws of the State of Iowa.

Signature *Lindsay Erdman*
 Lindsay Erdman, P.E. and P.L.S. Iowa License Number 11442

Date: 4/8/04

My license renewal date is December 31, 2004

Corner(s) to be Indexed

Corner	Section	Township	Range
NE 1/16	22	95	12