

UNITED STATES PUBLIC LAND SURVEY CORNER CERTIFICATE

OF  
 Land Survey Monuments situated in Section 23, Township 95 North, Range  
12 West of the Fifth Principal Meridian, CHICKASAW County, Iowa  
 Previously recorded in none in County Recorder's Office  
(book, page, document number, etc.)

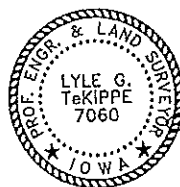
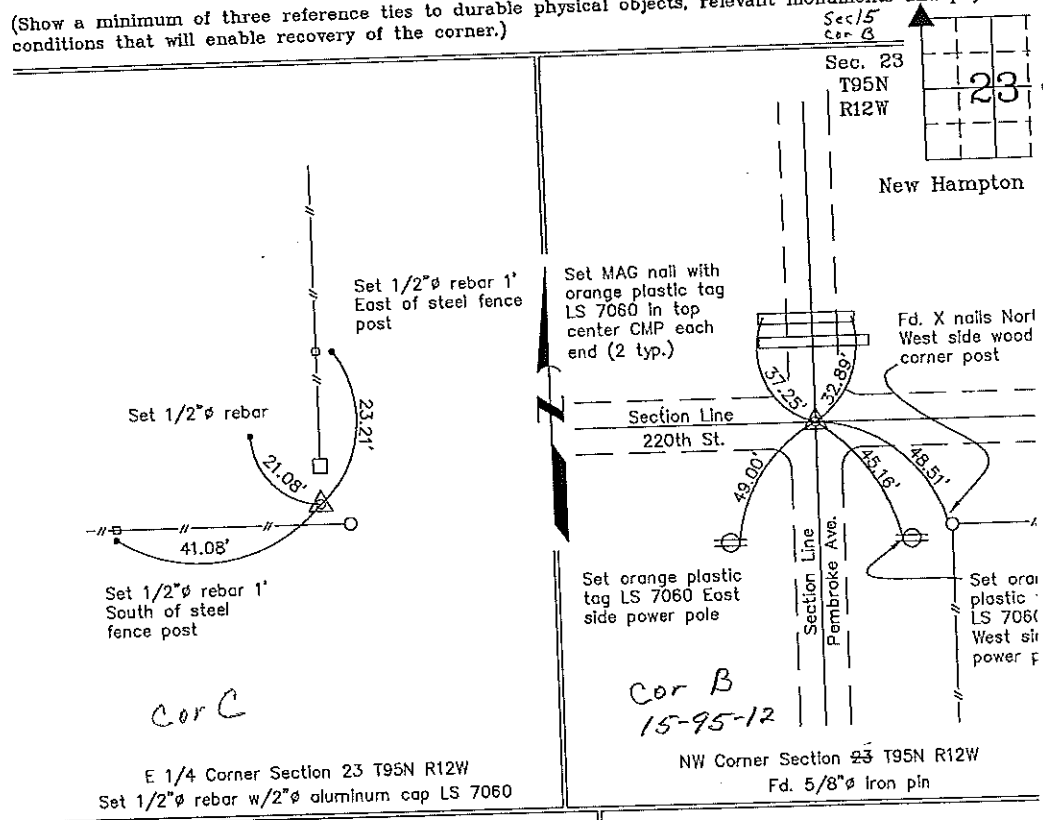
(Show reason for preparing this certificate, the evidence and detailed procedures used in establishing the corner positions and monumentation found or placed.)

Monument Description and Remarks: E 1/4 Corner Section 23 T95N R12W: Set 1/2"Ø rebar with 2"Ø aluminum cap LS 7060. Corner set at existing fence corner after comparing position to adjacent corners in the section.

NW Corner Section 23 T95N R12W: Found 5/8"Ø iron pin. Information obtained from Chickasaw County Engineer's office. Field book "New Hampton Twp." - Corner B of Section 15.

PLAN - VIEW

(Show a minimum of three reference ties to durable physical objects, relevant monuments and physical conditions that will enable recovery of the corner.)



I hereby certify that this land surveying document was prepared and the related survey work was performed by me or under my direct personal supervision and that I am a duly licensed Land Surveyor under the laws of the State of Iowa.

*Lyle G. TeKippe* 12-15-00  
 Lyle G. TeKippe Date  
 License number 7060  
 My license renewal date is December 31, 2000.  
 Sheets covered by this seal: Individual

List Corners to be Indexed			
Corners	Section	Twp.	Range
E 1/4 C	23	95	12
NW B	23 15	95	12

Filed 3-20-01

2000-2238

County Engineer  
 Copy