

DOCUMENT No. 00972 FILED FOR RECORD THE 4th DAY OF November, 1996 AT 8:58 O'CLOCK A.M., BOOK 162 Deeds PAGE 275 STATE OF IOWA, CHICKASAW COUNTY, Leitha N. Ross Recorder, Deputy

Prepared by: Erdman Engineering P.C. 708 Commerce Drive, P.O. Box 246, Decorah Iowa, 52101  
Phone (319)382-4194, Fax (319)382-3623

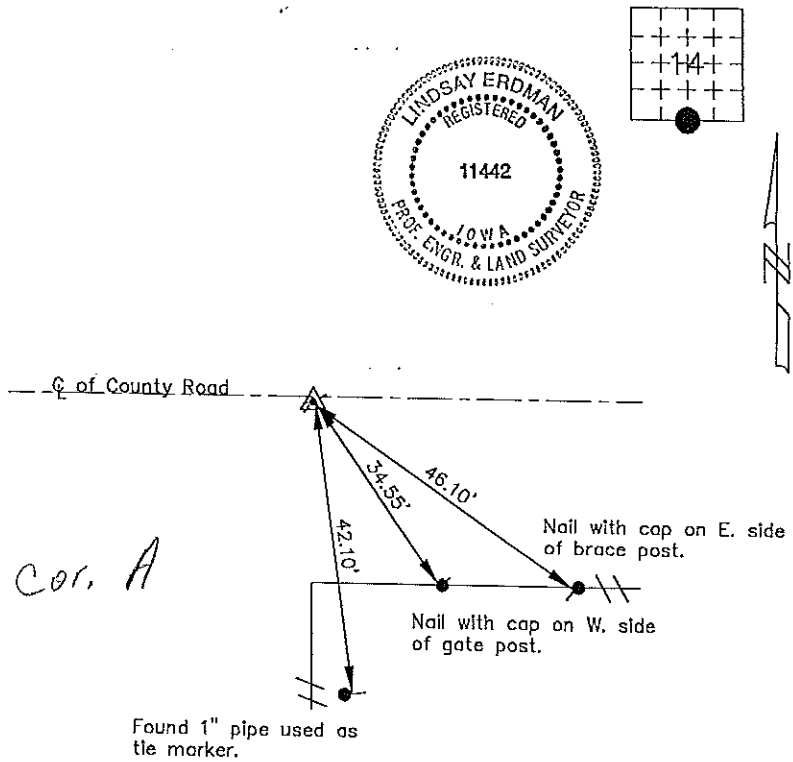
### United States Public Land Survey Corner Certificate of

Land Survey Monuments situated in Section 14 Township 95 Range 12 of the Fifth Principle Meridian, Chickasaw County, Iowa. Previously recorded in does not apply in County Recorders Office.

(Show reason for preparing this certificate, the evidence and detailed procedures used in establishing the corner positions and monumentation found or placed.)

Monument Description and Remarks: This certificate is prepared in accordance with Section 355.11 of the 1995 Code of Iowa. No previous certificate has been filed for this corner location. Based on County Engineer's Reference Ties we found a 1" pipe used as a tie marker. From this tie we found a 1" pipe down 12" below the crushed rock surface of the S 1/4 corner of Sec. 14-95-12. We set a 1/2" bar with cap RLS #11442 inside the 1" pipe and below the crushed rock surface ±3".

Plan-View  
(Show a minimum of three reference ties to durable physical objects, relevant monuments and physical conditions that will enable recovery of the corner.)



I hereby certify that the survey work was completed and this certificate was prepared by me or under my direct supervision and that I am a duly registered land surveyor under the laws of the State of Iowa.

Signature [Signature]  
Lindsay Erdman, P.E. and L.S.

Date: 12/17/96 Reg. No. 11442

My license will be renewed January 1, 1997.

Corners	Section	Twp.	Range
S 1/4	14	95	12