

DOCUMENT No. 00974 FILED FOR RECORD THE 4th DAY OF STATE OF IOWA, CHICKASAW COUNTY
 RECORDING FEE \$ 6.00 November, 19 96 AT 8:58 Lindsay Erdman Recorder
 TRANSFER FEE \$ 0.00 O'CLOCK A.M. BOOK 162 DEEDS PAGE 276 By LEITHA N. ROSS Deputy

Prepared by: Erdman Engineering P.C. 708 Commerce Drive, P.O. Box 246, Decorah Iowa, 52101
 Phone (319)382-4194, Fax (319)382-3623

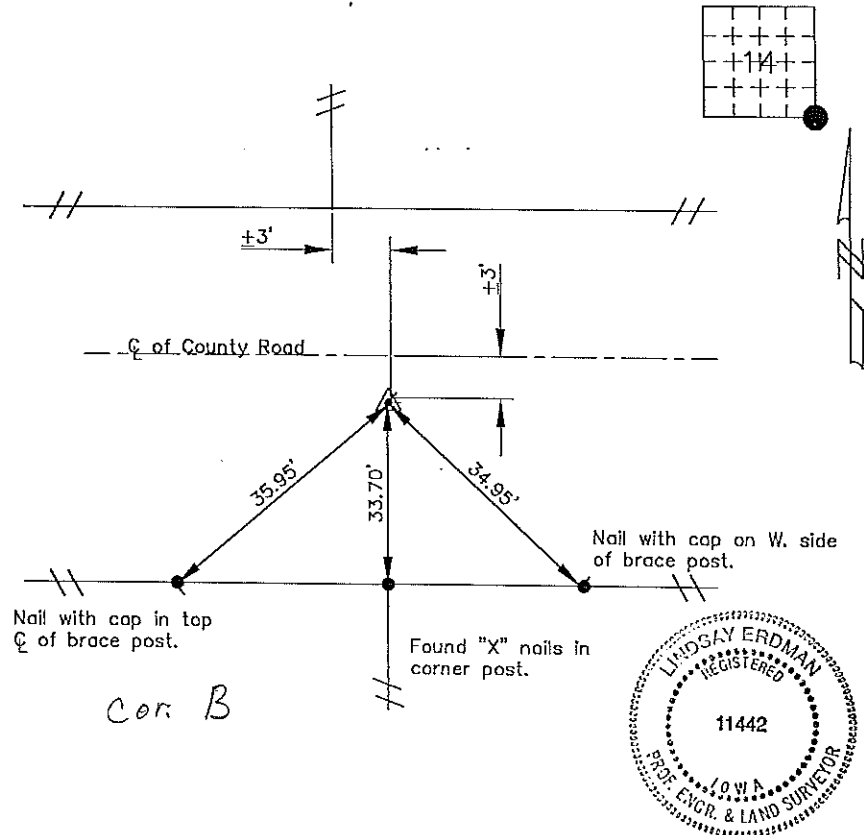
United States Public Land Survey Corner Certificate of

Land Survey Monuments situated in Section 14 Township 95 Range 12 of the Fifth Principle Meridian,
Chickasaw County, Iowa. Previously recorded in does not apply in County Recorders Office.

(Show reason for preparing this certificate, the evidence and detailed procedures used in establishing the
 corner positions and monumentation found or placed.)

Monument Description and Remarks: This certificate is prepared in accordance with Section 355.11
 of the 1995 Code of Iowa. No previous certificate has been filed for this corner location. Based on
 County Engineer's Reference Ties we found a set of "X" nails used as a tie marker. From this tie we
 found a 1" bar down $\pm 14"$ below the crushed rock surface at the SE corner of Sec. 14-95-12. We
 set a 1/2" bar with cap RLS #11442 over the top of the 1" bar.

Plan-View
 (Show a minimum of three reference ties to durable physical objects, relevant
 monuments and physical conditions that will enable recovery of the corner.)



I hereby certify that the survey work was completed
 and this certificate was prepared by me or under by
 direct supervision and that I am a duly registered
 land surveyor under the laws of the State of Iowa.

Signature Lindsay Erdman
 Lindsay Erdman, P.E. and L.S.
 Date: 10/17/96 Reg. No. 11442

My license will be renewed January 1, 1997

Corners	List Corners to be Indexed		
	Section	Twp.	Range
SE	14	95	12