

Section 14-95-12
As referred to in
Engr. Tie Book

Chickasaw Co Recorder Cindy Messersmith
 FEE BOOK 2006-0801 4/14/2006 @ 09:37AM
 SEC SEC COR CERT Book: Page: #: 1
 Total Fees: \$7.00

TeKIPPE ENGINEERING, P.C., 128 South Vine Street, West Union, Iowa 52175 Phone (563) 422-5131

UNITED STATES PUBLIC LAND SURVEY CORNER CERTIFICATE

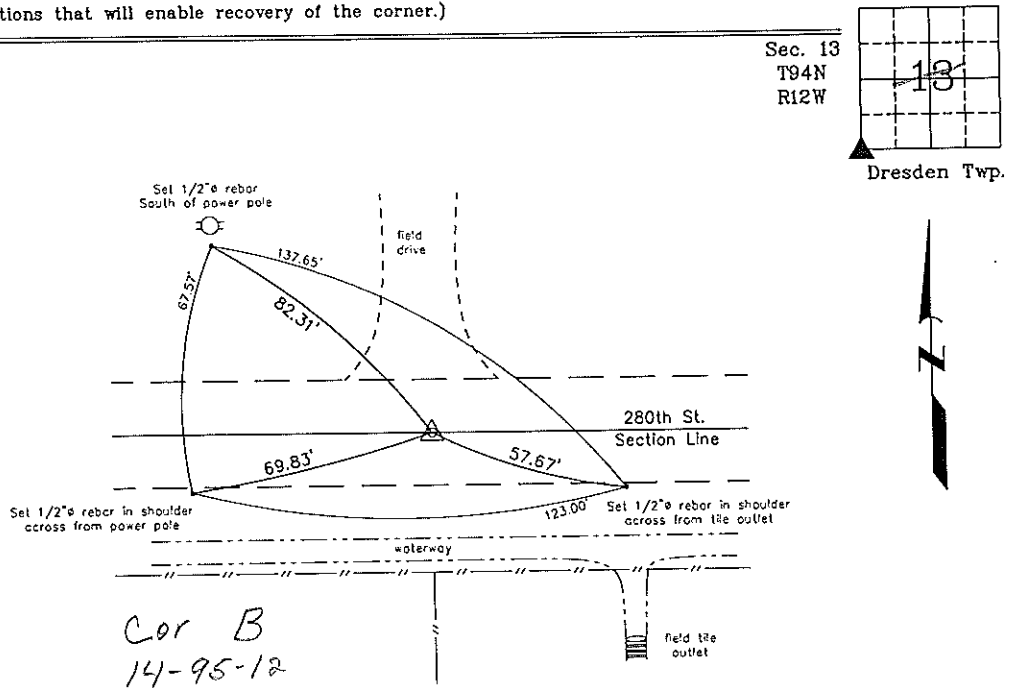
OF 14 95
 Land Survey Monuments situated in Section 13, Township 94 North, Range 12 West of the Fifth Principal Meridian, CHICKASAW County, Iowa.
 Previously recorded in none in County Recorder's Office.
(book, page, document number, etc.)

(Show reason for preparing this certificate, the evidence and detailed procedures used in establishing the corner positions and monumentation found or placed.)

Monument Description and Remarks: SW CORNER SECTION 13 T94N R12W: Found 1"Ø iron pin, 14" long and 1.5' deep, with information obtained from the Chickasaw County Engineer's Office in Field Book Dresden Twp. Corner Ties, Section 14, Corner 'B'. Reset pin at 4" deep.

PLAN - VIEW

(Show a minimum of three reference ties to durable physical objects, relevant monuments and physical conditions that will enable recovery of the corner.)



Cor B
14-95-12

SW Corner Section 13 T94N R12W
 Found 1"Ø iron pin, 14" long and 1.5' deep. Reset pin at 4" deep.



I hereby certify that this land surveying document was prepared and the related survey work was performed by me or under my direct personal supervision and that I am a duly licensed Land Surveyor under the laws of the State of Iowa.

Michael J. Shimak April 12, 2006
 Michael J. Shimak Date

License number 16961
 My license renewal date is December 31, 2007.
 Sheets covered by this seal Individual

List Corners to be Indexed			
Corners	Section	Twp.	Range
SW	13	94N	12W

Project Number 06103.1S
 FB F'burg #1 PG. 17-19
 X:\Section Corners\Sec. 13\13-94-12u.dwg

DOCUMENT No. 00974 FILED FOR RECORD THE 4th DAY OF STATE OF IOWA, CHICKASAW COUNTY
 RECORDING FEE \$ 6.00 November, 1996 AT 8:58 Letha N. Ross Recorder
 TRANSFER FEE \$ 0.00 O'CLOCK A.M. BOOK 162 DEEDS PAGE 276 By Letha N. Ross Deputy

Prepared by: Erdman Engineering P.C. 708 Commerce Drive, P.O. Box 246, Decorah Iowa, 52101
 Phone (319)382-4194, Fax (319)382-3623

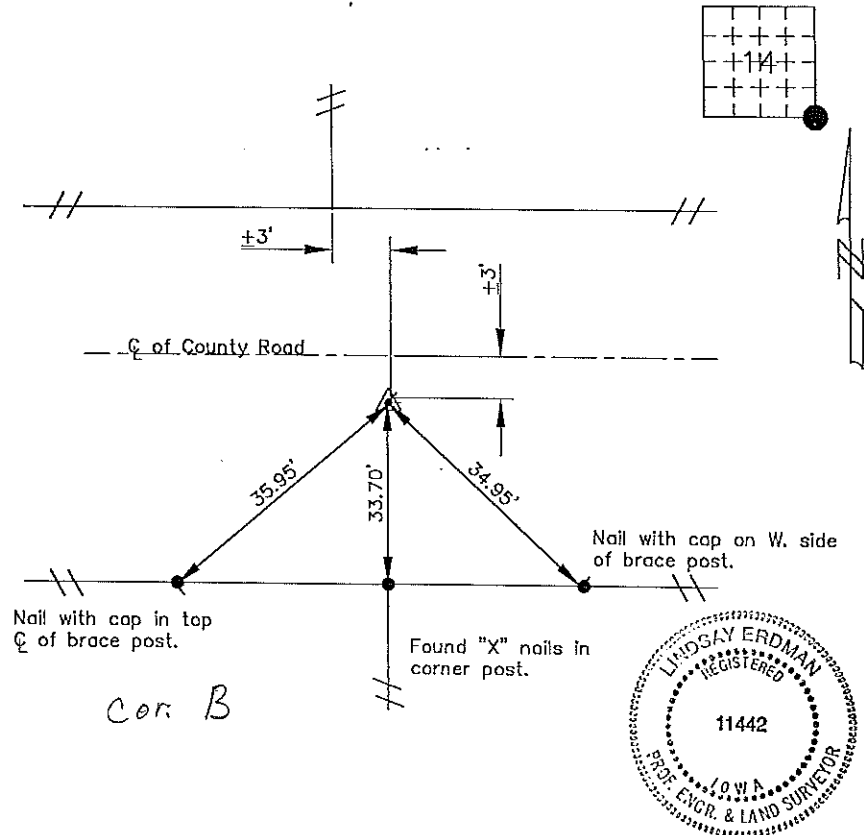
United States Public Land Survey Corner Certificate
 of

Land Survey Monuments situated in Section 14 Township 95 Range 12 of the Fifth Principle Meridian,
Chickasaw County, Iowa. Previously recorded in does not apply in County Recorders Office.

(Show reason for preparing this certificate, the evidence and detailed procedures used in establishing the
 corner positions and monumentation found or placed.)

Monument Description and Remarks: This certificate is prepared in accordance with Section 355.11
 of the 1995 Code of Iowa. No previous certificate has been filed for this corner location. Based on
 County Engineer's Reference Ties we found a set of "X" nails used as a tie marker. From this tie we
 found a 1" bar down $\pm 14"$ below the crushed rock surface at the SE corner of Sec. 14-95-12. We
 set a 1/2" bar with cap RLS #11442 over the top of the 1" bar.

Plan-View
 (Show a minimum of three reference ties to durable physical objects, relevant
 monuments and physical conditions that will enable recovery of the corner.)



I hereby certify that the survey work was completed
 and this certificate was prepared by me or under by
 direct supervision and that I am a duly registered
 land surveyor under the laws of the State of Iowa.

Signature Lindsay Erdman
 Lindsay Erdman, P.E. and L.S.
 Date: 10/17/96 Reg. No. 11442

My license will be renewed January 1, 1997

Corners	List Corners to be Indexed		
	Section	Twp.	Range
SE	14	95	12