

Section 22-95-12
As referred to in
Engl. Tie Book

TeKIPPE ENGINEERING, P.C., 128 South Vine Street, West Union, Iowa 52175 Phone (319) 422-5131

UNITED STATES PUBLIC LAND SURVEY CORNER CERTIFICATE

Land Survey Monuments situated in Section 23²², Township 95 North, Range 12 West of the Fifth Principal Meridian, CHICKASAW County, Iowa.
Previously recorded in none in County Recorder's Office.
(book, page, document number, etc.)

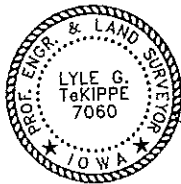
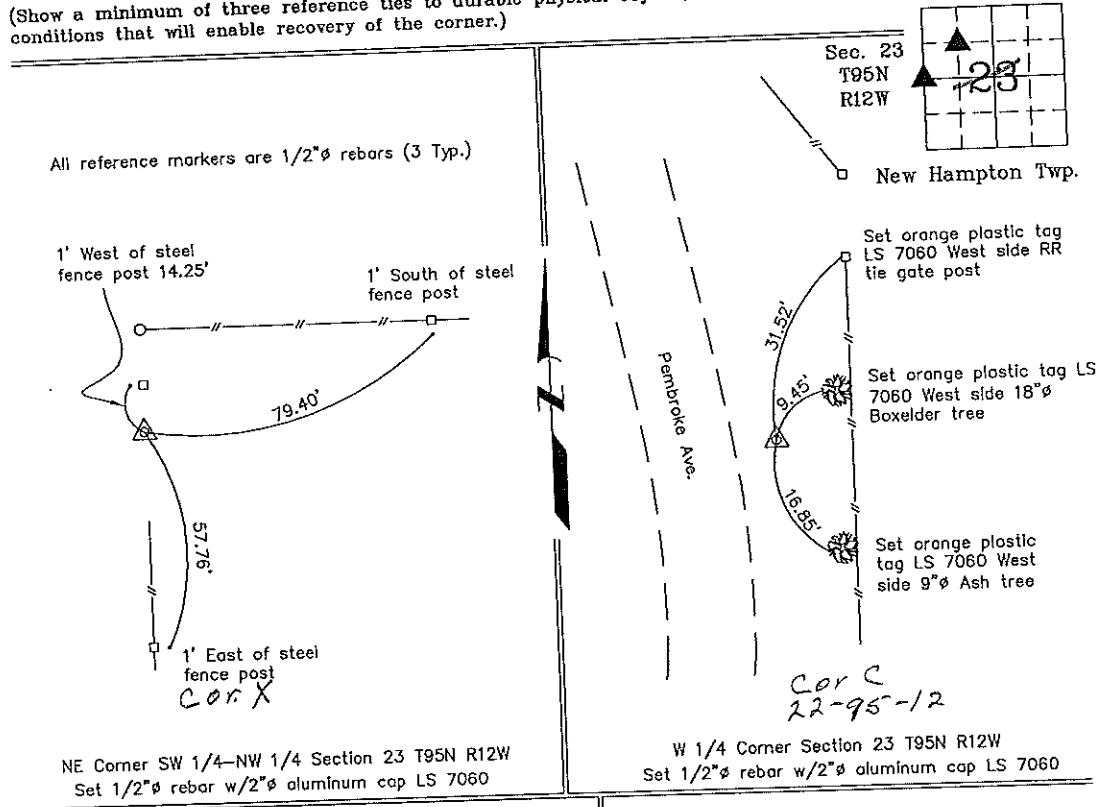
(Show reason for preparing this certificate, the evidence and detailed procedures used in establishing the corner positions and monumentation found or placed.)

Monument Description and Remarks: NE Corner SW 1/4 NW 1/4 Section 23 T95N R12W: Set 1/2"Ø rebar with 2"Ø aluminum cap LS 7060 at the intersection of the Quarter-Quarter Section Lines.
W 1/4 Corner Section 23 T95N R12W: Set 1/2"Ø rebar with 2"Ø aluminum cap LS 7060 by doubling the distance from the NW Corner through the SW Corner of the NW 1/4-NW 1/4 of Section 23.

PLAN - VIEW

Project Number 00194.LS
FB. 48H PO. 37-41

(Show a minimum of three reference ties to durable physical objects, relevant monuments and physical conditions that will enable recovery of the corner.)



I hereby certify that this land surveying document was prepared and the related survey work was performed by me or under my direct personal supervision and that I am a duly licensed Land Surveyor under the laws of the State of Iowa.

Lyle G. TeKippe 12-15-00
Lyle G. TeKippe Date
License number 7060
My license renewal date is December 31, 2000.
Sheets covered by this seal: Individual

List Corners to be Indexed			
Corners	Section	Twp.	Range
NE-SW-NW Cor Z	23	95	12
W 1/4 Cor C	23	95	12
	22	95	12

Filed 3-19-01

2000-2240

County Engineer
Copy