

UNITED STATES PUBLIC LAND SURVEY CORNER CERTIFICATE

OF
 Land Survey Monuments situated in Section 23, Township 95 North, Range
12 West of the Fifth Principal Meridian, CHICKASAW County, Iowa
 Previously recorded in none in County Recorder's Office
 (book, page, document number, etc.)

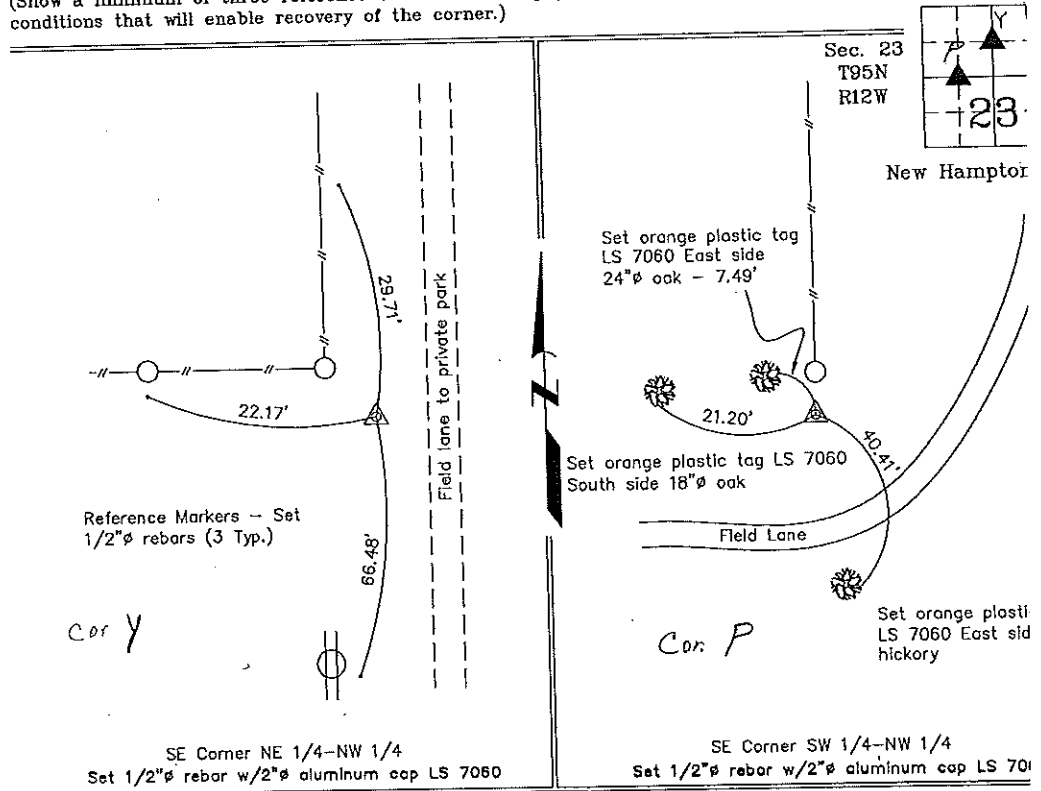
(Show reason for preparing this certificate, the evidence and detailed procedures used in establishing the corner positions and monumentation found or placed.)

Monument Description and Remarks: SE Corner NE 1/4 NW 1/4 Section 23 T95N R12W
 Set 1/2" ϕ rebar with 2" ϕ aluminum cap LS 7060 equidistant and on line between the
 W 1/4 Corner and the Center of Section 23.
SE Corner SW 1/4 NW 1/4 Section 12 T95N R12W: Set 1/2" ϕ rebar with 2" ϕ aluminum
 cap LS 7060 at the extension of the 1/4-1/4 Section Line fence after comparing the
 position to the rest of the Corners in Section 23.

PLAN - VIEW

Project Number 00
 FH 46H PG. 1

(Show a minimum of three reference ties to durable physical objects, relevant monuments and physical conditions that will enable recovery of the corner.)



I hereby certify that this land surveying document was prepared and the related survey work was performed by me or under my direct personal supervision and that I am a duly licensed Land Surveyor under the laws of the State of Iowa.

Lyle G. TeKippe 12-15-00
 Lyle G. TeKippe Date
 License number 7060
 My license renewal date is December 31, 2000.
 Sheets covered by this seal: Individual



List Corners to be Indexed			
Corners	Section	Twp.	Range
SE-NE-NW <i>Cor Y</i>	23	95	12
SE-SW-NW <i>Cor P</i>	23	95	12

Filed 3-19-01

2000-2241

County Copy