



Prepared by & Return to: Kirk D. Reicks, HR5, L.L.C., 10 East Main Street, New Hampton, IA 50659, Phone 641-394-2725

United States Public Land Survey Corner Certificate

Land Survey Monument situated in
 Section 24, Township 95 North, Range 12 West of the Fifth Principal Meridian, Chickasaw County, Iowa.
 Not on file in the County Recorder's Office.

This certificate is being prepared in compliance with Iowa Code Chapter 355.11 because:

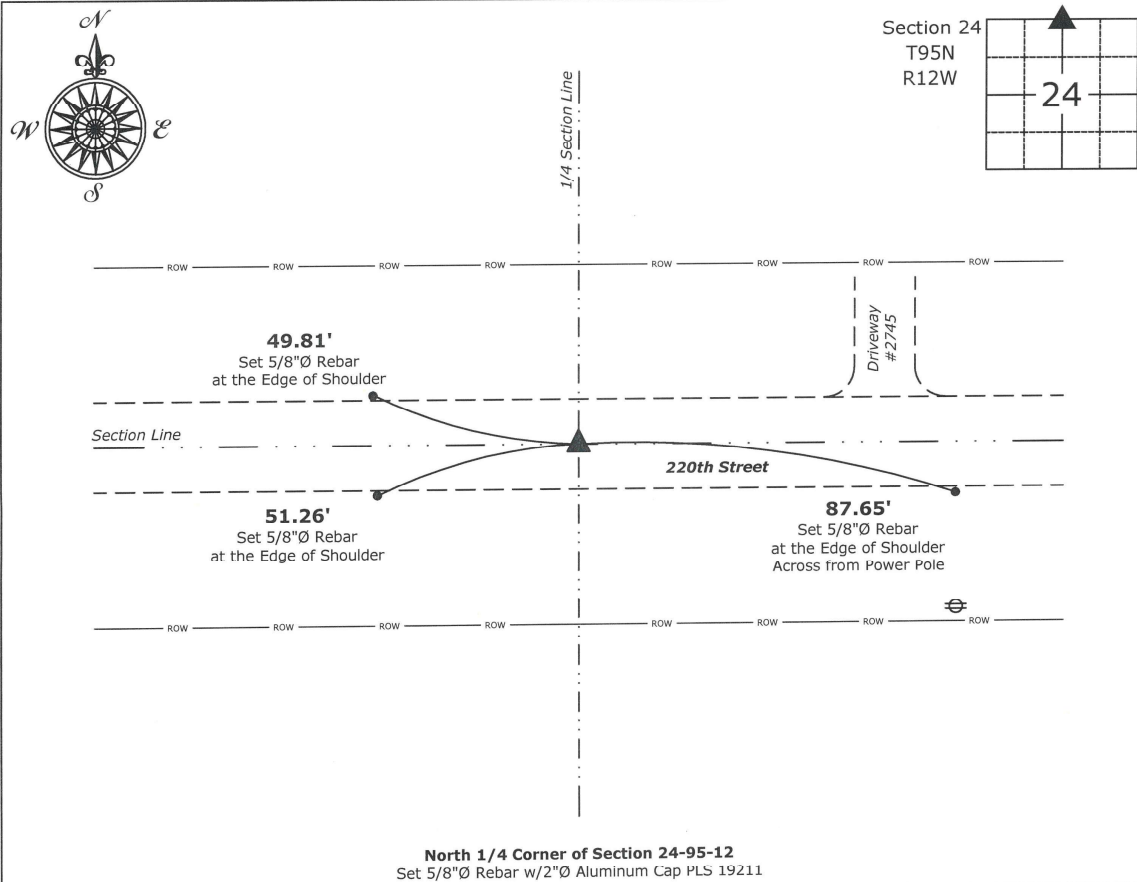
- There is no certificate on file for this corner.
- There are no longer three valid ties of record.
- There are changes to reference ties of record.
- There is change of monumentation of record.
- To clarify description of record monument (ties).

Monument Description and Remarks:

North 1/4 Corner: Set 5/8"Ø Rebar w/2"Ø Aluminum Cap PLS 19211 by doubling the distance from the Northwest Corner to the Northeast Corner of the Northwest Quarter of the Northwest Quarter, both of said Section, and at the Centerline of 220th Street Right-of-Way. This position was accepted after an exhaustive search for the monument as indicated in Chickasaw County Engineer's Field Book, New Hampton Township Ties to Corners, Section 13, Corner A, was not located.

Plan View - Not to Scale

(Show a minimum of three reference ties to durable physical objects, relevant monuments and physical conditions that will enable recovery of the corner.)



I hereby certify that this land surveying document was prepared and the related survey work was performed by me or under my direct personal supervision and that I am a duly licensed Land Surveyor under the laws of the State of Iowa.

Kirk D. Reicks 7-23-2024
 Kirk D. Reicks Date:
 License number 19211
 My license renewal date is December 31, 2024.
 Sheets covered by this seal: Individual sheet only

| List Corner to be Indexed | | | |
|-------------------------------|---------|----------|-------|
| Corner | Section | Township | Range |
| N 1/4 | 24 | 95 | 12 |
| Project Number: 2024-080 | | | |
| FB: Chickasaw 13, Page(s) 3-5 | | | |

File: S:_Projects - NHO\County Control Systems - NHO\CHICKASAW\CHICK-35 - 2024.dwg, 7/23/2024 10:43:13 AM