

Section 25-95-12  
 As referred to in  
 Engr Tic Book

Chickasaw Co. Recorder  
 Cindy Messersmith  
**Fee Book 2008-1525**  
 08/06/2008 8:1008AM  
 SCC SEC COR CERT # Pages: 1  
 Book: Page: \$7.00  
 Total Fees:

Prepared by: Erdman Engineering, P.C., 708 Commerce Drive, P.O. Box 246, Decorah, Iowa 52101 (563) 382-4194

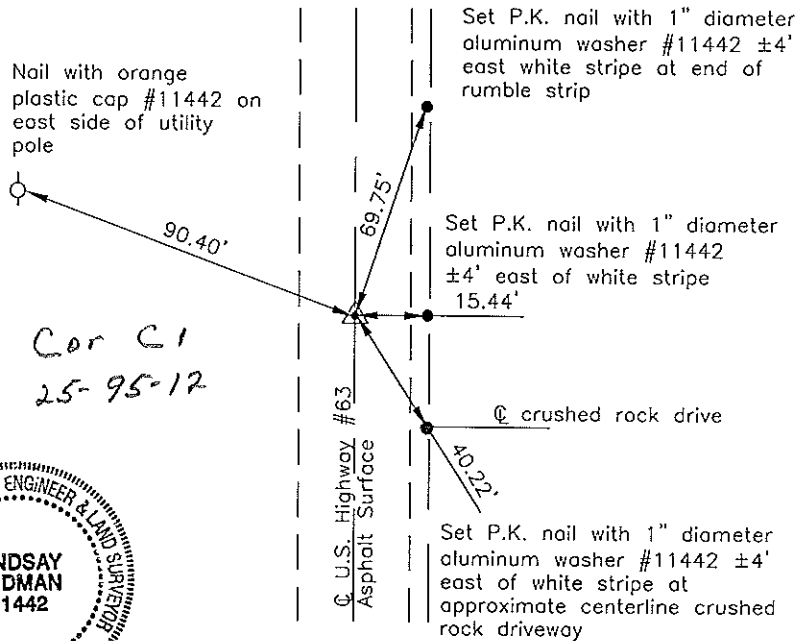
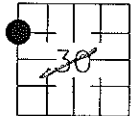
United States Public Land Survey Corner Certificate  
 of 25<sup>th</sup> 95<sup>th</sup>

Land Survey Monuments situated in Section 30, Township 94, Range 12 West of the 5th Principal Meridian in Chickasaw County, Iowa. Previously recorded in does not apply in the county Recorder's Office.

Monument Description and Remarks: This certificate is prepared in accordance with Section 193C of the Code of Iowa. No previous certificate has been filed for this corner location. We found no record of the WNW 1/8 Corner being set. We found no evidence of a monument in the field other than the highway. We found the W 1/4 Corner and the NW Corner. We set a Mag-nail with 1 1/2" diameter stainless steel washer #11442 on line and equidistant between the W 1/4 Corner and the NW Corner as the WNW 1/8 Corner of Section 30, Township 94 North, Range 12 West.

Plan-View

Cor C'  
 25-95-12



I hereby certify that this land surveying document was prepared and the related survey work was performed by me or under my direct personal supervision and that I am a duly licensed Land Surveyor under the laws of the State of Iowa.

Signature [Signature]  
 Lindsay Erdman, P.E. and P.L.S. Iowa License Number 11442

Date: 8/11/08

My license renewal date is December 31, 2008

Corner(s) to be Indexed

Corner	Section	Township	Range
WNW 1/8	30	94	12

3705