

Instrument #: 2019-1030
 07/19/2019 03:01:37 PM Total Pages: 1
 SCC SECTION CORNER CERTIFICATES
 Recording Fee: \$ 7.00
 Shirley Troyna, Recorder, Chickasaw County Iowa



Prepared by & Return to: Herold - Reicks Surveying, 10 East Main Street, New Hampton, IA 50659, Ph. 641-394-2725

United States Public Land Survey Corner Certificate

Land Survey Monument situated in
 Section 25, Township 95 North, Range 12 West of the Fifth Principal Meridian, Chickasaw County, Iowa.
 Not on file in the County Recorder's office.

This certificate is being prepared in compliance with Iowa Code Chapter 355.11 because:



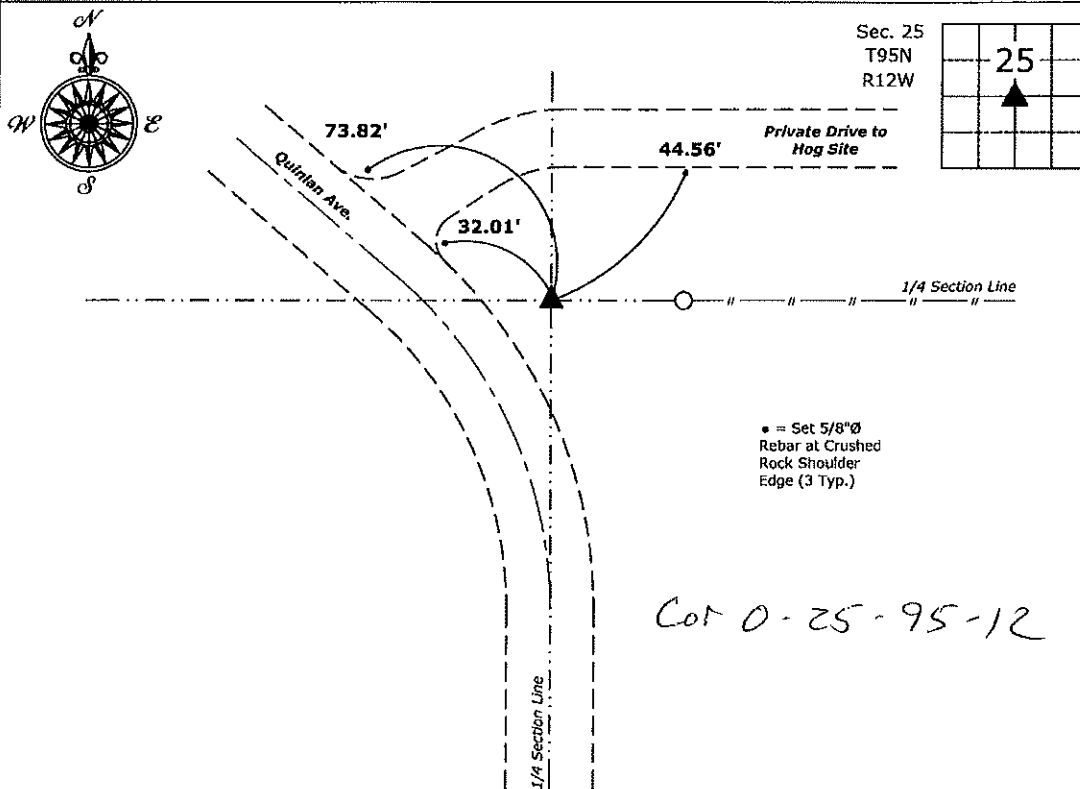
- There is no certificate on file for this corner.
- There are no longer three valid ties of record.
- There are changes to reference ties of record.
- There is change of monumentation of record.
- To clarify description of record monument (ties).

Monument Description and Remarks:

Center of Section: Set 5/8"Ø Rebar with Aluminum Cap PLS 19211 with information obtained from a Survey and Plat made by Lyle G. TeKippe, recorded in Book 139, Page 343, on file in the Chickasaw County Recorder's office, New Hampton, Iowa.

Plan View

(Show a minimum of three reference ties to durable physical objects, relevant monuments and physical conditions that will enable recovery of the corner.)



Lot 0-25-95-12

Center of Section 25-95-12
 Set 5/8"Ø Rebar with Aluminum Cap PLS 19211



I hereby certify that this land surveying document was prepared and the related survey work was performed by me or under my direct personal supervision and that I am a duly licensed Land Surveyor under the laws of the State of Iowa.

Kirk D. Reicks 7-19-19
 Kirk D. Reicks Date:

License number 19211
 My license renewal date is December 31, 2020.
 Sheets covered by this seal: Individual sheet only

List Corner to be Indexed

Corner	Section	Twp.	Range
CTR	25	95	12

Project Number: 2019-071
 FB: Chickasaw 9, Pgs. 53-56

File: S:_Projects - NHO\County Control Systems - NHO\CHICKASAW\CHICK-35\CHICK-35.dwg, 7/19/2019 2:45:49 PM