

UNITED STATES PUBLIC LAND SURVEY CORNER CERTIFICATE

OF
 Land Survey Monuments situated in Section 23, Township 95 North, Range
12 West of the Fifth Principal Meridian, CHICKASAW County, Iowa.
 Previously recorded in none in County Recorder's Office.
(book, page, document number, etc.)

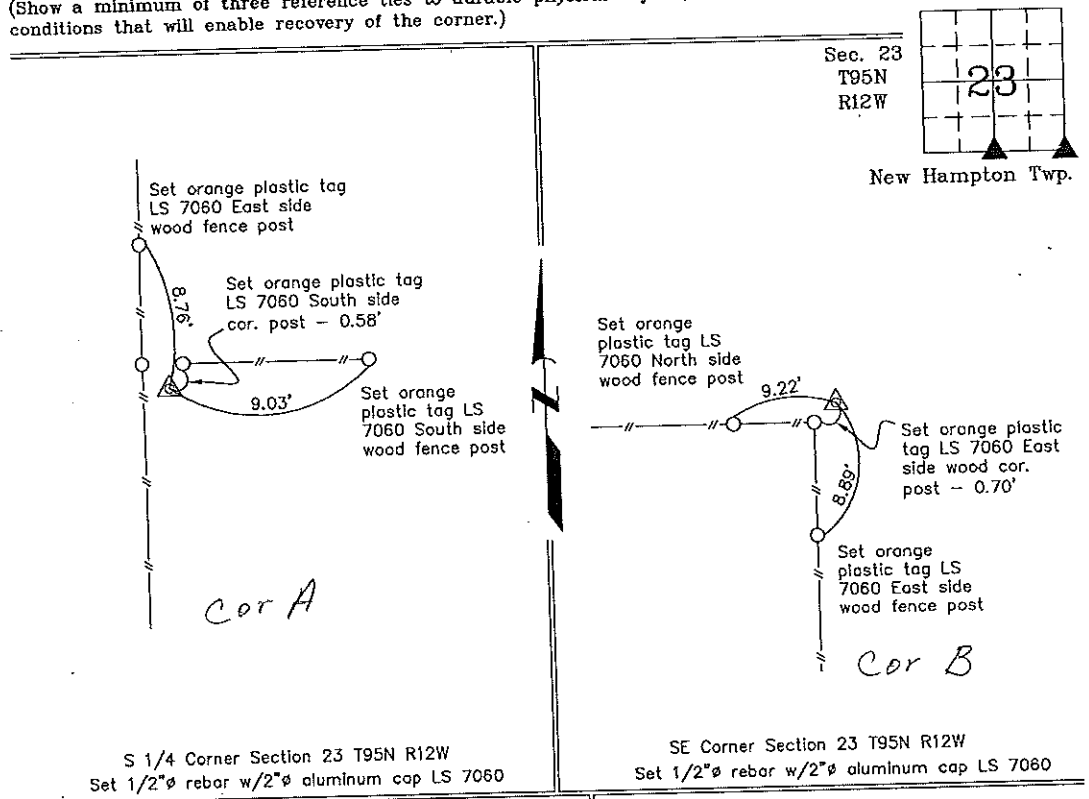
(Show reason for preparing this certificate, the evidence and detailed procedures used in establishing the corner positions and monumentation found or placed.)

Monument Description and Remarks: S 1/4 Corner Section 23 T95N R12W: Set 1/2"Ø rebar w/ 2"Ø aluminum cap LS 7060 at existing corner post after comparing to adjacent Section Corners.
SE Corner Section 23 T95N R12W: Set 1/2"Ø rebar with 2"Ø aluminum cap LS 7060 at existing corner post after comparing to adjacent Section Corners.

PLAN - VIEW

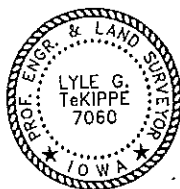
Project Number 00194.LS
 FB 48H PG. 37-41

(Show a minimum of three reference ties to durable physical objects, relevant monuments and physical conditions that will enable recovery of the corner.)



S 1/4 Corner Section 23 T95N R12W
 Set 1/2"Ø rebar w/2"Ø aluminum cap LS 7060

SE Corner Section 23 T95N R12W
 Set 1/2"Ø rebar w/2"Ø aluminum cap LS 7060



I hereby certify that this land surveying document was prepared and the related survey work was performed by me or under my direct personal supervision and that I am a duly licensed Land Surveyor under the laws of the State of Iowa.

Lyle G. TeKippe 12-15-00
 Lyle G. TeKippe Date

License number 7060
 My license renewal date is December 31, 2000.
 Sheets covered by this seal Individual

List Corners to be Indexed			
Corners	Section	Twp.	Range
S 1/4 A	23	95	12
SE B	23	95	12

File 3-19-01

2000-2243

County Engineer
 Copy