

FILED 2001-1088  
 RECORDER'S OFFICE  
 CHICKASAW COUNTY, IOWA  
 Dec 16 00  
 2001 JUN 4 AM 11 33

CINDY MESSERSMITH  
 COUNTY RECORDER  
 STEVE BUSSE P.O. BOX 241 508 ELM STREET ALLISON, IOWA 50602 319-267-2519

**UNITED STATES PUBLIC LAND SURVEY CORNER CERTIFICATE**

Land Survey Monuments situated in Section 22, Township 95 North, Range 12 West, of the Fifth Principal Meridian, Chickasaw County, Iowa.

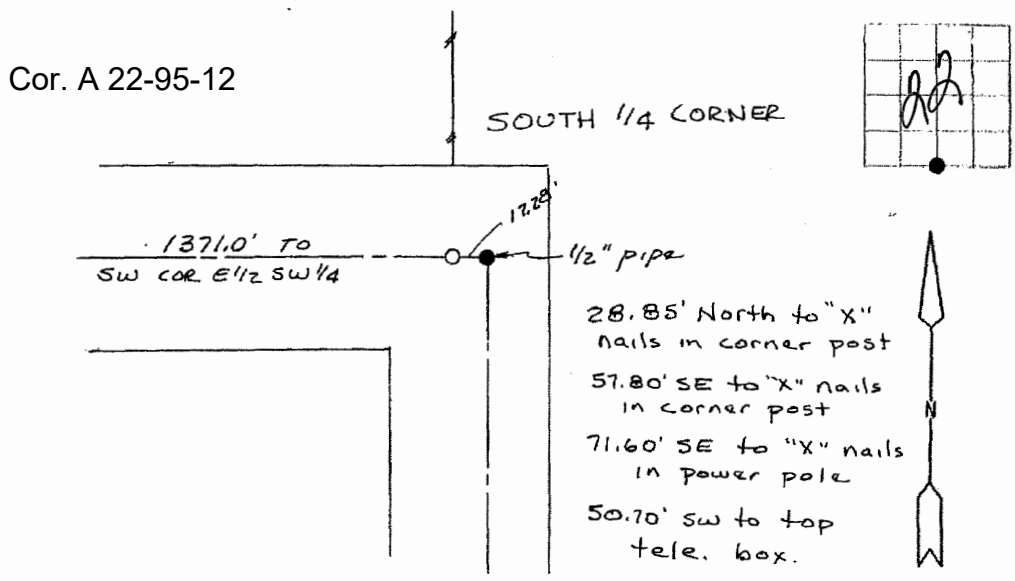
Previously recorded in N/A in County Recorder's Office.  
 (book, page, document number, etc.)

(Show reason for preparing this certificate, the evidence and detailed procedures used in establishing the corner positions and monumentation found or placed.)

Monument Description and Remarks: Set 1/2" rebar at south 1/4 corner.  
Set on line with pin found at sw corner East 1/2 SW 1/4  
and pipe found on road to south @ south 1/4 cor. Used fence  
line to North to intersect with line of south.

**PLAN - VIEW**

(Show a minimum of three reference ties to durable physical objects, relevant monuments and physical conditions that will enable recovery of the corner)



I hereby certify that the survey work was completed and this land surveying document was prepared by me or under my direct personal supervision and that I am a duly licensed land surveyor under the laws of the state of Iowa

Signature: Steve Busse  
 Name typed or printed: STEVE BUSSE

Date: 5/30/01 Reg. No. 19018

My license renewal date is December 31, 2002

SEAL

Corners	List Corners to be indexed		
	Section	Twp	Range
S 1/4 COR.	22	95	12