

Herold - Reicks Surveying, 25 1/2 East Main Street, Suite 204, New Hampton, IA 50659, Ph. 641-394-2725

*Sec. 22-95-22
 As referred to
 Engr. Tie Book*

UNITED STATES PUBLIC LAND SURVEY CORNER CERTIFICATE

Land Survey Monuments situated in Section ²² 26, Township 95 North, Range 12 West of the Fifth Principal Meridian, Chickasaw County, Iowa. Previously recorded in Bk. 2000, Pg. 2242 in the County Recorder's office.

This certificate is being prepared in compliance with Iowa Code Chapter 355.11 because:

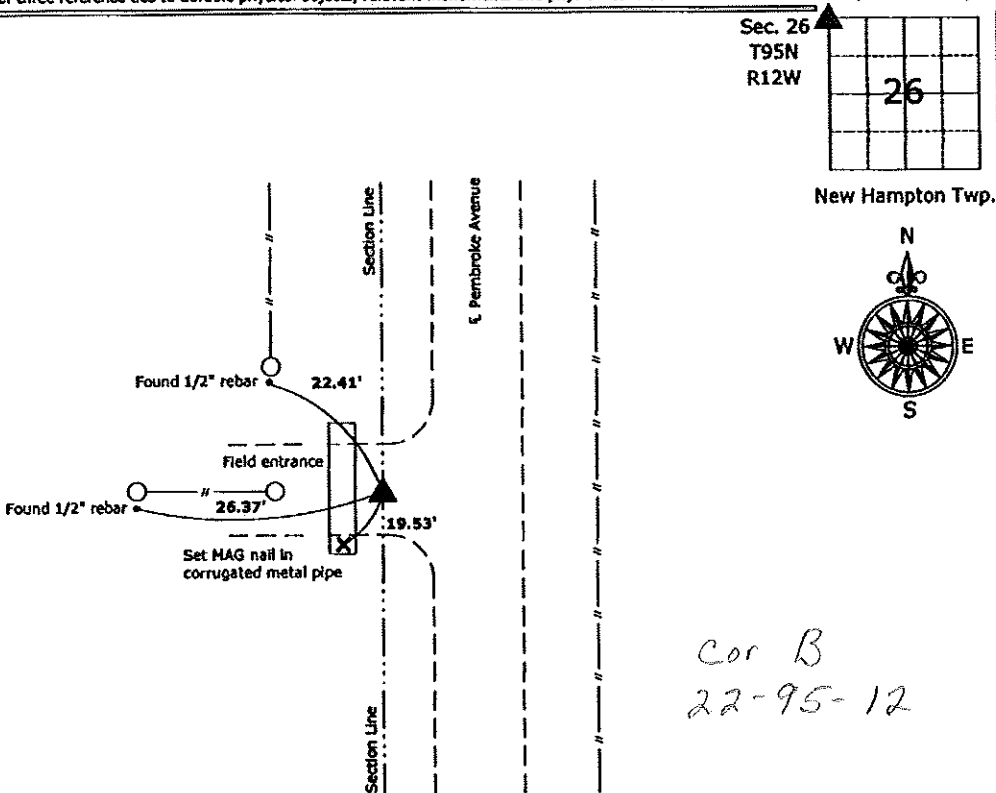
- There is no certificate on file for this corner.
- There are no longer three valid ties of record.
- There are changes to reference ties of record.
- There is change of monumentation of record.
- To clarify description of record monument (ties).

Monument Description and Remarks:

Northwest Corner: Set 5/8"Ø rebar with 2"Ø aluminum cap PLS 15525. The previous monument was removed when the culvert was replaced.

PLAN - VIEW

(Show a minimum of three reference ties to durable physical objects, relevant monuments and physical conditions that will enable recovery of the corner.)



*Cor B
 22-95-12*

Northwest Corner Section 26-95-12
 Set 5/8"Ø rebar with 2"Ø aluminum cap PLS 15525



I hereby certify that this land surveying document was prepared and the related survey work was performed by me or under my direct personal supervision and that I am a duly licensed Land Surveyor under the laws of the State of Iowa.

Paul R. Herold 12-16-09
 Paul R. Herold Date:

License number 15525
 My license renewal date is December 31, 2010.
 Sheets covered by this seal: Individual sheet only

List Corners to be Indexed			
Corners	Section	Twp.	Range
NW	26	95	12

Project Number: 2009-142
 FB: Chickasaw County 3, Pgs. 44-45

File: S:\Projects\2009\2009-142\mvg\2009-142.dwg, 12/16/2009 04:10:26

Section 22-95-12
 As referred to in
 Engg. Tie Book

UNITED STATES PUBLIC LAND SURVEY CORNER CERTIFICATE

OF
 Land Survey Monuments situated in Section 23²², Township 95 North, Rang
12 West of the Fifth Principal Meridian, CHICKASAW County, Iowa
 Previously recorded in none in County Recorder's Office
 (book, page, document number, etc.)

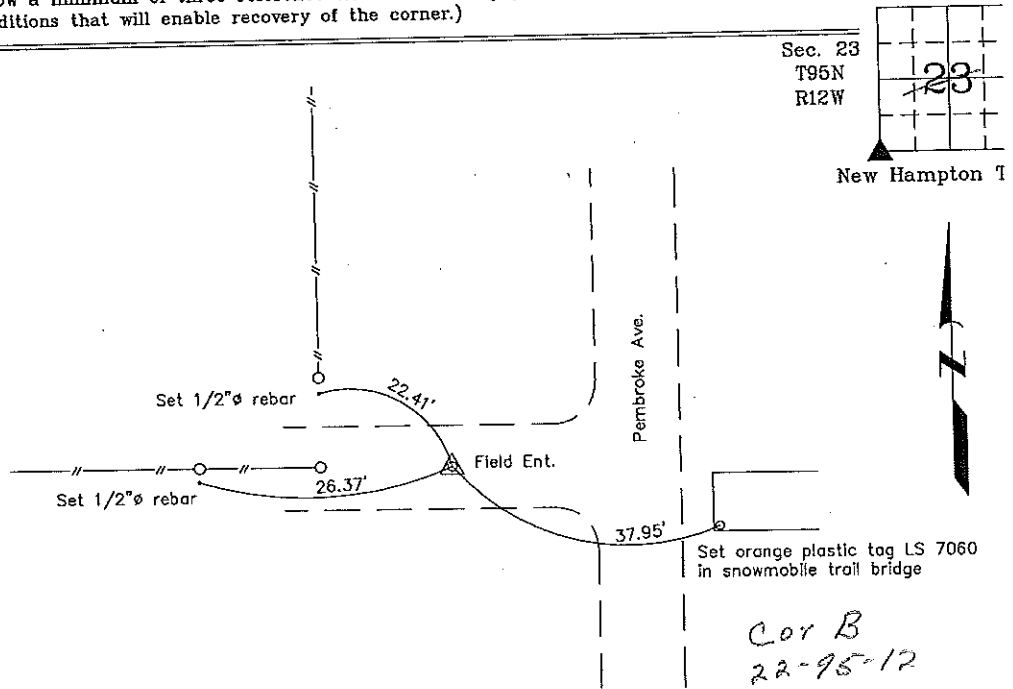
(Show reason for preparing this certificate, the evidence and detailed procedures used in establishing the corner positions and monumentation found or placed.)

Monument Description and Remarks: **SW Corner Section 23 T95N R12W: Set 1/2"Ø rebar with 2"Ø aluminum cap LS 7060. Set at record location 20 feet west of the center of the road. Data obtained from the Chickasaw County Engineer's office in Field Book New Hampton Township Corner Ties - Corner B, Section 22.**

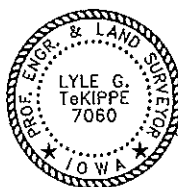
PLAN - VIEW

Project Number 00194.LS
 FB. 48H PG. 37-41

(Show a minimum of three reference ties to durable physical objects, relevant monuments and physical conditions that will enable recovery of the corner.)



SW Corner Section 23 T95N R12W
 Set 1/2"Ø rebar w/2"Ø aluminum cap LS 7060



I hereby certify that this land surveying document was prepared by me or under my direct personal supervision and that I am a duly licensed Land Surveyor under the laws of the State of Iowa.

Lyle G. TeKippe 12-15-00
 Lyle G. TeKippe Date
 License number 7060
 My license renewal date is December 31, 2000.
 Sheets covered by this seal: Individual

List Corners to be Indexed			
Corners	Section	Twp.	Range
SW	23	95	12
B	22	95	12

Filed 3-19-01

2000-2242

County
 Copy