

FILED 2002-0068
 RECORDER'S OFFICE
 CHICKASAW COUNTY, IOWA
file #4000
 2002 JAN 9 AM 9 09
 CINDY MESSERSMITH
 COUNTY RECORDER

TEKIPPE ENGINEERING, P.C., 128 South Vine Street, West Union, Iowa 52176 Phone (563) 422-6131

UNITED STATES PUBLIC LAND SURVEY CORNER CERTIFICATE

OF

Land Survey Monuments situated in Section 27, Township 95 North, Range 12 West of the Fifth Principal Meridian, CHICKASAW County, Iowa. Previously recorded in (1) Book 154 Page 128 (2) none in County Recorder's Office.
(book, page, document number, etc.)

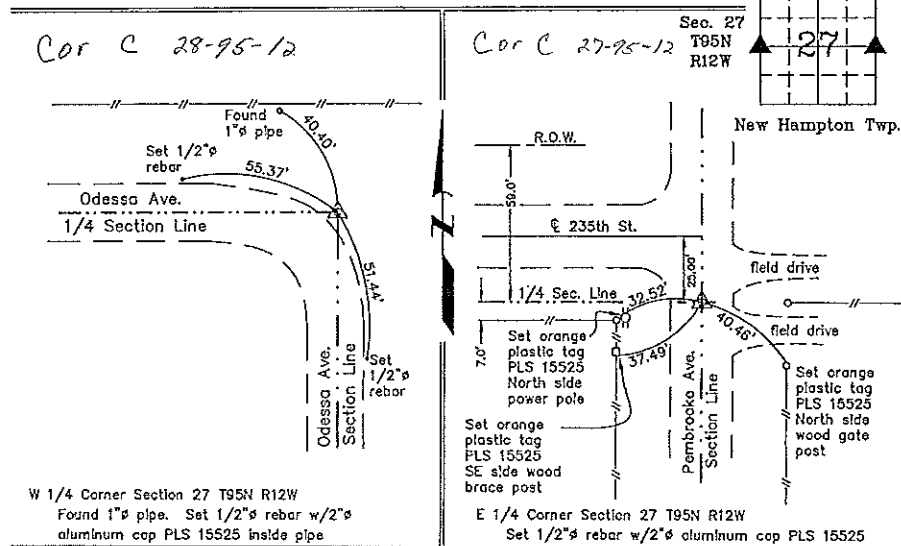
(Show reason for preparing this certificate, the evidence and detailed procedures used in establishing the corner positions and monumentation found or placed.)

Monument Description and Remarks: (1) W 1/4 Corner Section 27 T95N R12W: Found 1" pipe with information obtained from the previous Section Corner Certificate recorded in the Chickasaw County Recorder's Office in Book 154, Page 128. Placed 1/2" rebar w/2" aluminum cap PLS 15525 inside pipe. Two of the previous reference ties were missing. Two reference ties were added.
(2) E 1/4 Corner Section 27 T95N R12W: Found 1-1/2" x 1/4" bent flat iron with information obtained from the Chickasaw County Engineer's Office in Field Book New Hampton Twp. Corner Ties, Section 27, Corner 'C'. Set 1/2" rebar w/2" aluminum cap PLS 15525.

PLAN - VIEW

Project Number 01236.LS
 FB. 48H PG. 64-66

(Show a minimum of three reference ties to durable physical objects, relevant monuments and physical conditions that will enable recovery of the corner.)



I hereby certify that this land surveying document was prepared by me or under my direct personal supervision and that I am a duly licensed Land Surveyor under the laws of the State of Iowa.
Paul R. Herold 1-8-02
 Paul R. Herold Date
 License number 15525
 My license renewal date is December 31, 2002.
 Sheets covered by this ass: Individual

List Corners to be Indexed			
Corners	Section	Twp.	Range
W 1/4	27	95N	12W
E 1/4	27	95N	12W

Section 28-95-12
As referred to in
Engl. Tie Book

DL317-70

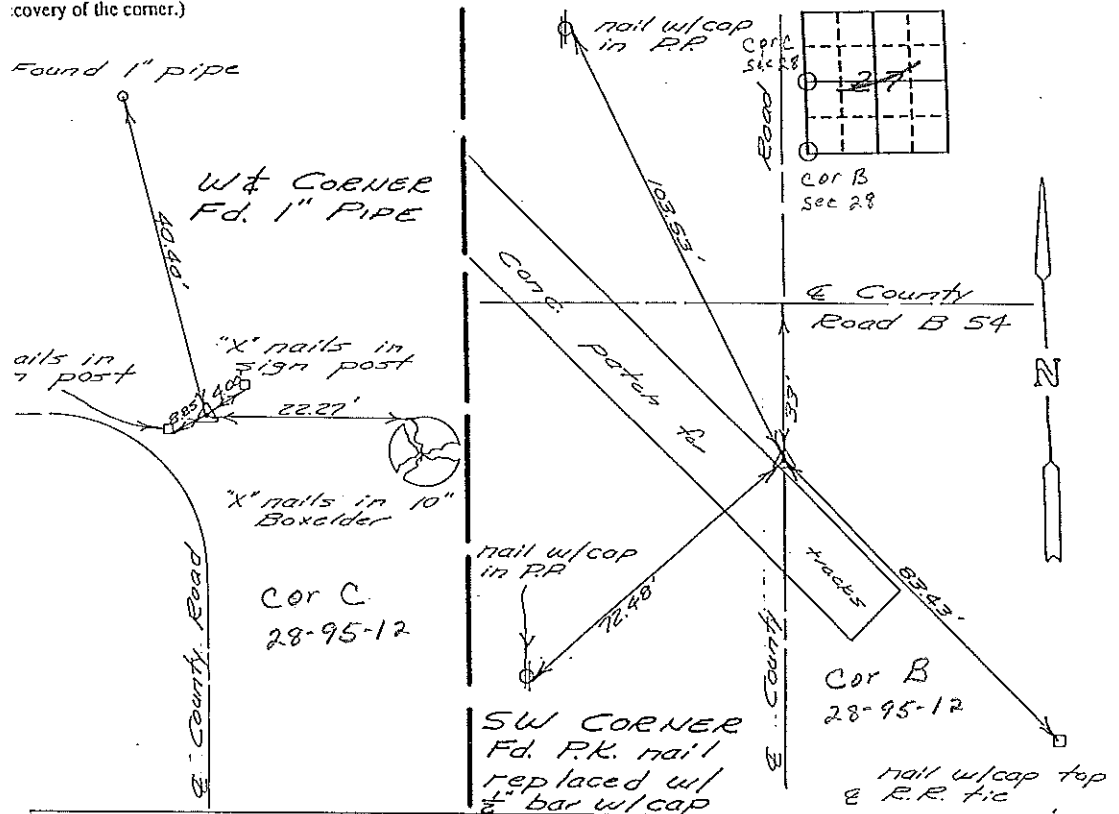
UNITED STATES PUBLIC LAND SURVEY CORNER CERTIFICATE

OF
nd Survey Monuments situated in Section 27 28, Township 95N, Range 12 W, of the Fifth Principal Meridian, Chickasaw County, Iowa. Previously recorded in does not apply in County Recorder's Office.

(hook, page, document number, etc.)
How reason for preparing this certificate, the evidence and detailed procedures used in establishing the corner positions and monumentation found or placed.)
Monument Description and Remarks: see below

PLAN - VIEW

Show a minimum of three reference ties to durable physical objects, relevant monuments and physical conditions that will enable recovery of the corner.)



I hereby certify that the survey work was completed and this certificate was prepared by me or under my direct personal supervision and that I am a duly registered land surveyor under the laws of the state of Iowa.

Signature: L.P. Erdman
Name typed or printed: L.P. Erdman
Date: 1-18-94 Reg. No. 2886

Corners	List Corners to be Indexed Section	Twp	Range
W 1/4	27	95N	12W
SW	27	95N	12W



SEAL