

Section 21-95-12
As referred to in
Engr. TIC Book

2005 JUL 1 AM 9 56

CINDY MESSERSMITH
COUNTY RECORDER

TeKIPPE ENGINEERING, P.C., 128 South Vine Street, West Union, Iowa 52175 Phone (563) 422-5131

UNITED STATES PUBLIC LAND SURVEY CORNER CERTIFICATE

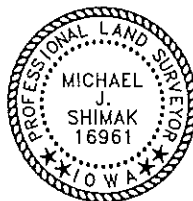
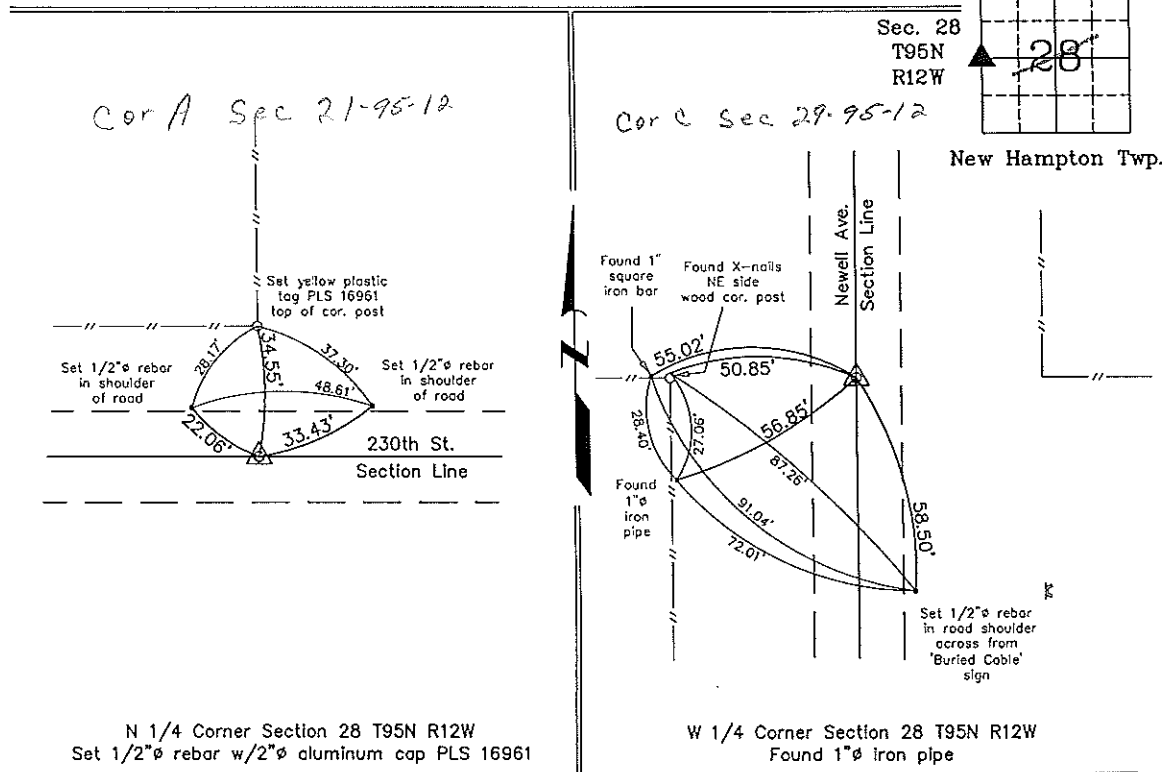
OF
Land Survey Monuments situated in Section 28, Township 95 North, Range 12 West of the Fifth Principal Meridian, CHICKASAW County, Iowa. Previously recorded in none in County Recorder's Office.
(book, page, document number, etc.)

(Show reason for preparing this certificate, the evidence and detailed procedures used in establishing the corner positions and monumentation found or placed.)

Monument Description and Remarks: N 1/4 CORNER SECTION 28 T95N R12W: Set 1/2"Ø rebar w/2"Ø aluminum cap PLS 16961 at the split of the R.O.W. on the extension of the 1/4 Section Line fence from the North as indicated in information obtained from the Chickasaw County Engineer's Office in Field Book New Hampton Twp. Corner Ties, Section 21. Corner 'A'. W 1/4 CORNER SECTION 28 T95N R12W: Found 1"Ø iron pipe with information obtained from the Chickasaw County Engineer's Office in Field Book New Hampton Twp. Corner Ties, Section 29, Corner 'C'.

PLAN - VIEW

(Show a minimum of three reference ties to durable physical objects, relevant monuments and physical conditions that will enable recovery of the corner.)



I hereby certify that this land surveying document was prepared and the related survey work was performed by me or under my direct personal supervision and that I am a duly licensed Land Surveyor under the laws of the State of Iowa.
Michael J. Shimak June 30, 2005
Michael J. Shimak Date
License number 16961
My license renewal date is December 31, 2005.
Sheets covered by this seal: Individual

List Corners to be Indexed			
Corners	Section	Twp.	Range
N 1/4	28	95N	12W
W 1/4	28	95N	12W

Project Number 05122.LS
FB. 46L PG. 40-42
X:\Section Corners\Sec. 28\28-95-12ck.dwg