

Chickasaw Co. Recorder
 Cindy Messersmith
Fee Book 2016-0804
 06/20/2016 @0414PM
 SCC SEC COR CERT # Pages: 1
 Total Fees: \$7.00

Prepared by & Return to Herold - Reicks Surveying, 19 East Main Street, New Hampton, IA 50659, Ph. 641-394-2725

UNITED STATES PUBLIC LAND SURVEY CORNER CERTIFICATE

Land Survey Monuments situated in Section **20**, Township **95** North, Range **12** West of the Fifth Principal Meridian, **Chickasaw** County, Iowa. Not previously recorded in the County Recorder's office.

This certificate is being prepared in compliance with Iowa Code Chapter 355.11 because:

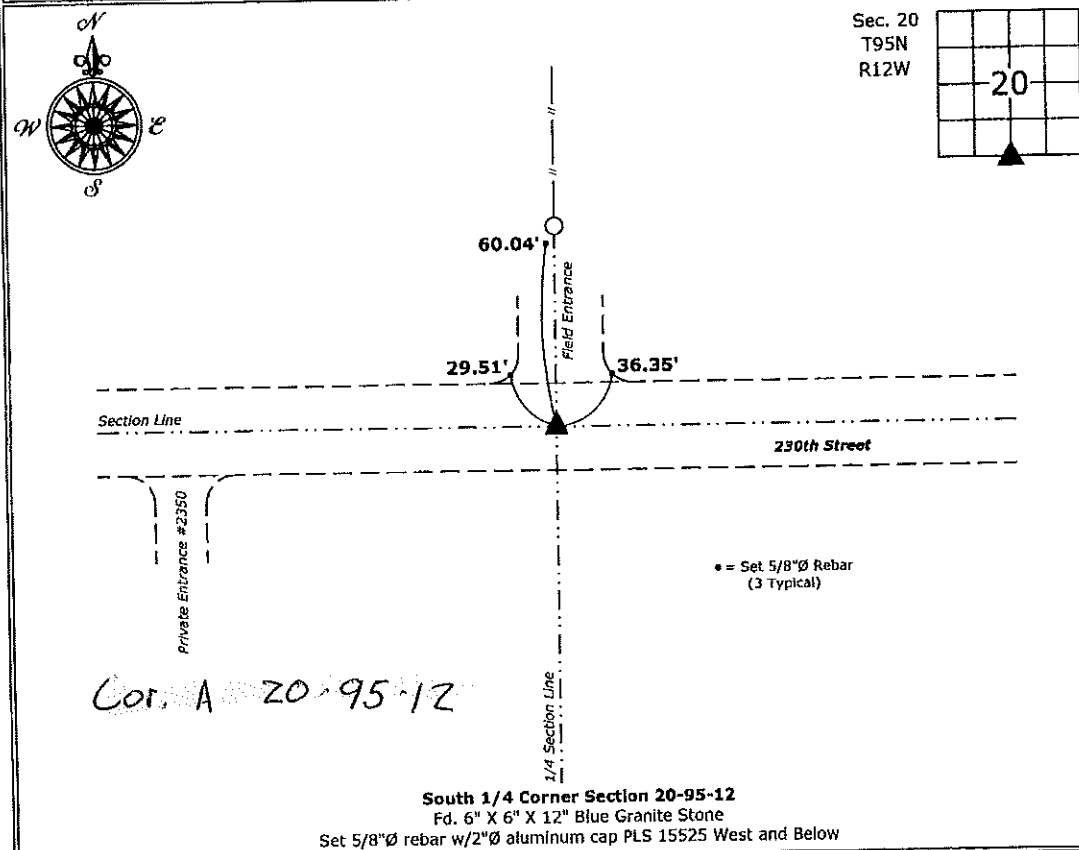
- There is no certificate on file for this corner.
- There are no longer three valid ties of record.
- There are changes to reference ties of record.
- There is change of monumentation of record.
- To clarify description of record monument (ties).

Monument Description and Remarks:

South 1/4 Corner: Fd. 6" X 6" X 12" Blue Granite Stone at the intersection of the Centerline of 230th Street and the Southerly Extension of a possession line fence from the North with information from County Engineer's Field Book "New Hampton," Section 20. All ties indicated in County Engineer's notes were missing, set three new ties to update corner. Set 5/8"Ø rebar w/2"Ø aluminum cap PLS 15525 West and Below of found Stone as magnetic accessory to aid in the future recovery of said monument.

PLAN - VIEW

(Show a minimum of three reference ties to durable physical objects, relevant monuments and physical conditions that will enable recovery of the corner.)



I hereby certify that this land surveying document was prepared and the related survey work was performed by me or under my direct personal supervision and that I am a duly licensed Land Surveyor under the laws of the State of Iowa.

Paul R. Herold 6-20-16
 Paul R. Herold Date:
 License number 15525
 My license renewal date is December 31, 2016.
 Sheets covered by this seal: Individual sheet only

List Corners to be Indexed			
Corners	Section	Twp.	Range
W 1/4	20	95	12
Project Number: 2016-058			
FB: Chickasaw County 7, Pg. 60			

File: S:_C3D Projects\County Control Systems\CHICKASAW\CHICK-28 (New Hampton)\CHICK-28.dwg, 6/17/2016 12:19:14 PM