

Chickasaw Co. Recorder
 Cindy Messersmith
Fee Book 2015-0114
 02/02/2015 @02:23PM
 SCC SEC COR CERT # Pages: 1
 Book: Page: \$7.00
 Total Fees:

Prepared by & Return to Herold - Reicks Surveying, 10 East Main Street, New Hampton, IA 50659, Ph. 54-394-2725

UNITED STATES PUBLIC LAND SURVEY CORNER CERTIFICATE

Land Survey Monuments situated in Section ¹⁹30, Township 95 North, Range 12 West of the Fifth Principal Meridian, Chickasaw County, Iowa. Not previously recorded in the County Recorder's office.

This certificate is being prepared in compliance with Iowa Code Chapter 355.11 because:

- There is no certificate on file for this corner.
- There are no longer three valid ties of record.
- There are changes to reference ties of record.
- There is change of monumentation of record.
- To clarify description of record monument (ties).

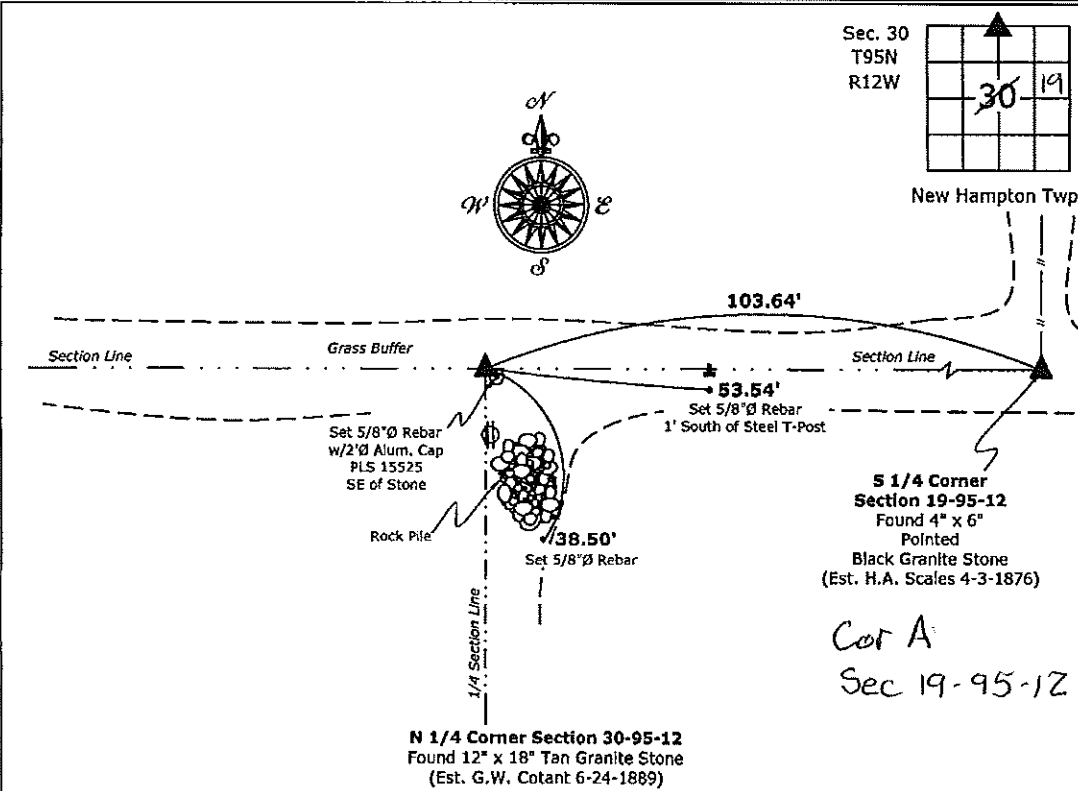
Monument Description and Remarks:

North 1/4 Corner: Found 12" x 18" Tan Granite Stone (Est. G.W. Cotant 6-24-1889), From information obtained from the Chickasaw County Recorder's Office, in Irregular Plat Book 1, Ranges 11 & 12, Page 217, and in Record of Certificates & Field Notes Book "A", Page 137. This Corner was established at the remaining evidence of the Post in Mound discovered by G.W. Cotant, June 24, 1889. This Survey indicated that he was aware of the existence of the S 1/4 Corner of 19-95-12 and that he did not agree that it was the same corner as the N 1/4 Corner of Section 30-95-12. Placed a Cut-"X" on the center of the Stone and also set a 5/8"Ø Rebar w/2"Ø Alum. Cap PLS 15525 Southeast of the Stone for magnetic detection.

NOTE: Due to the long standing usage of the two corners (N 1/4 Corner 30-95-12 & S 1/4 Corner 19-95-12) utilized independent of each other, it has been determined that they will be continued to be used as Independent Section Corners.

PLAN - VIEW

(Show a minimum of three reference ties to durable physical objects, relevant monuments and physical conditions that will enable recovery of the corner.)



I hereby certify that this land surveying document was prepared and the related survey work was performed by me or under my direct personal supervision and that I am a duly licensed Land Surveyor under the laws of the State of Iowa.
Paul R. Herold 2-2-15
 Paul R. Herold Date:
 License number 15525
 My license renewal date is December 31, 2016.
 Sheets covered by this seal: Individual sheet only

List Corners to be Indexed			
Corners	Section	Twp.	Range
N 1/4	30	95	12
Project Number: 2014-246			
FB: New Hampton 2, Pgs. 28-29			

File: S:\CSD Projects\County Control Systems\CHICKASAW\CHICK-28.dwg, 2/2/2015 1:28:34 PM

Prepared by & Return to: Herold - Recks Surveying, 10 East Main Street, New Hampton, IA 50659, Ph. 641-394-2725

UNITED STATES PUBLIC LAND SURVEY CORNER CERTIFICATE

Land Survey Monuments situated in Section 19, Township 95 North, Range 12 West of the Fifth Principal Meridian, Chickasaw County, Iowa. Not previously recorded in the County Recorder's office.

This certificate is being prepared in compliance with Iowa Code Chapter 355.11 because:

- There is no certificate on file for this corner.
- There are no longer three valid ties of record.
- There are changes to reference ties of record.
- There is change of monumentation of record.
- To clarify description of record monument (ties).

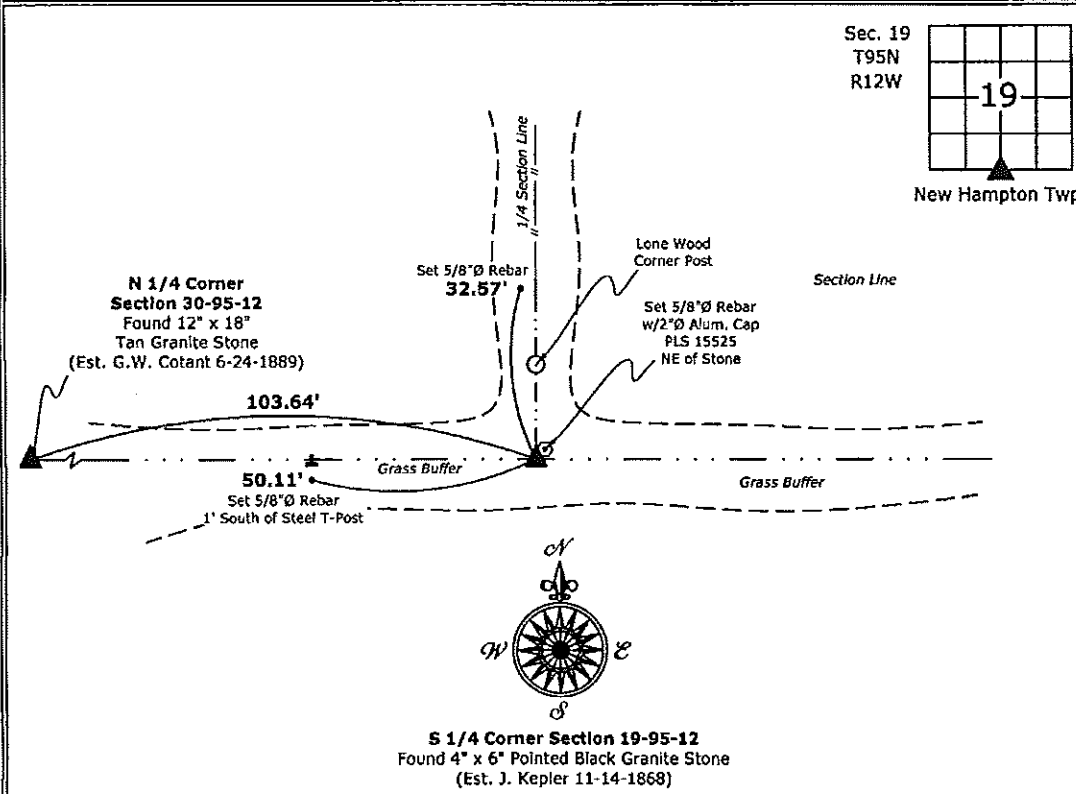
Monument Description and Remarks:

South 1/4 Corner: Found 4" x 6" Pointed Black Granite Stone (Est. H.A. Scales 4-3-1876) Corner Information obtained from the Chickasaw County Engineer's Office, in Survey Book 1, Page 77. This Corner was established when the Surveyor stated he could not find any evidence of the original corner and placed a stake as the corner, it appears that the assumption was they were surveying a nominal Section when in fact it is a Fractional Section, and placed the Corner midway between the SW & SE Corners of the Section, this corner was utilized to establish the Center of the Section and subsequent subdivision of the Section. In 1876, County Engineer's Survey Record Book 2, Page 258. County Surveyor H.A. Scales discovered the Post set by H.H. Potter and set a Stone at the same location (Midway between the SW & SE Corners) and subsequently further subdivided the Section and indicated a Stone was set at the Center of Section 19.

NOTE: Due to the long standing usage of the two corners (N 1/4 Corner 30-95-12 & S 1/4 Corner 19-95-12) utilized independent of each other, it has been determined that they will be continued to be used as independent Section Corners.

PLAN - VIEW

(Show a minimum of three reference ties to durable physical objects, relevant monuments and physical conditions that will enable recovery of the corner.)



I hereby certify that this land surveying document was prepared and the related survey work was performed by me or under my direct personal supervision and that I am a duly licensed Land Surveyor under the laws of the State of Iowa.

Paul R. Herold 2-2-15
 Paul R. Herold Date:
 License number 15525
 My license renewal date is December 31, 2016.
 Sheets covered by this seal: Individual sheet only

List Corners to be Indexed			
Corners	Section	Twp.	Range
S 1/4	19	95	12