

See 86.00
2002 DEC 23 AM 10 15

CINDY MESSERSMITH
COUNTY RECORDER

TeKIPPE ENGINEERING, P.C., 128 South Vine Street, West Union, Iowa 52175 Phone (563) 422-5131

UNITED STATES PUBLIC LAND SURVEY CORNER CERTIFICATE

OF

Land Survey Monuments situated in Section 19, Township 95 North, Range 12 West of the Fifth Principal Meridian, CHICKASAW County, Iowa.

Previously recorded in none in County Recorder's Office.
(book, page, document number, etc.)

(Show reason for preparing this certificate, the evidence and detailed procedures used in establishing the corner positions and monumentation found or placed.)

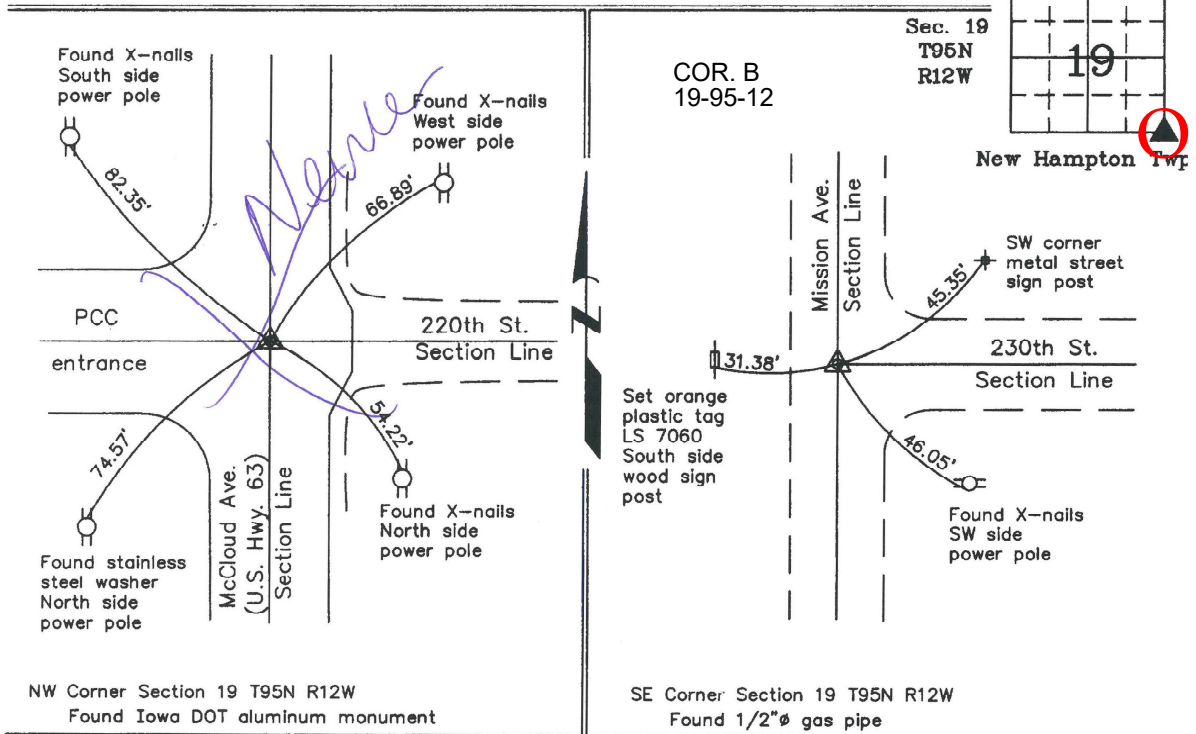
Monument Description and Remarks: NW Corner Section 19 T95N R12W: Found Iowa DOT monument with information obtained from as-built plans for U.S. Highway 63.

SE Corner Section 19 T95N R12W: Found 1/2"Ø gas pipe with information obtained from the Chickasaw County Engineer's Office in the Field Book New Hampton Twp. Corner Ties as Corner 'B', Section 19.

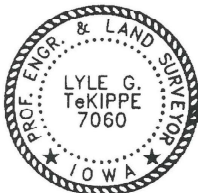
PLAN - VIEW

Project Number 00046.LS
FB. New Hampton-S.E.I.P
PG. 1-5

(Show a minimum of three reference ties to durable physical objects, relevant monuments and physical conditions that will enable recovery of the corner.)



I hereby certify that this land surveying document was prepared and the related survey work was performed by me or under my direct personal supervision and that I am a duly licensed Land Surveyor under the laws of the State of Iowa.



Lyle G. TeKippe 12-20-02
Lyle G. TeKippe, Date
License number 7060
My license renewal date is December 31, 2002.
Sheets covered by this seal: Individual

List Corners to be Indexed			
Corners	Section	Twp.	Range
NW	19	95N	12W
SE	19	95N	12W