

Instr. Number: 2022-2208  
 Recorded: 12/16/2022 at 3:01:39.0 PM  
 Pages 1  
 County Recording Fee: \$7.00  
 Iowa E-Filing Fee: \$3.00  
 Combined Fee: \$10.00  
 Revenue Tax:  
 Shirley Troyna RECORDER  
 Chickasaw County, Iowa

Prepared by & Return to: Herold - Reicks Surveying, 10 East Main Street, New Hampton, IA 50659, Ph. 641-394-2725

## CORRECTIVE UNITED STATES PUBLIC LAND SURVEY CORNER CERTIFICATE

Land Survey Monuments situated in Section **31**, Township **95** North, Range **12** West of the Fifth Principal Meridian, **Chickasaw** County, Iowa. **1., 2.)** Not previously recorded in the County Recorder's office.

This certificate is being prepared in compliance with Iowa Code Chapter 355.11 because:

Monument Description and Remarks:

- 1 & 2  There is no certificate on file for this corner.  
 There are no longer three valid ties of record.  
 There are changes to reference ties of record.  
 There is change of monumentation of record.  
 To clarify description of record monument (ties).

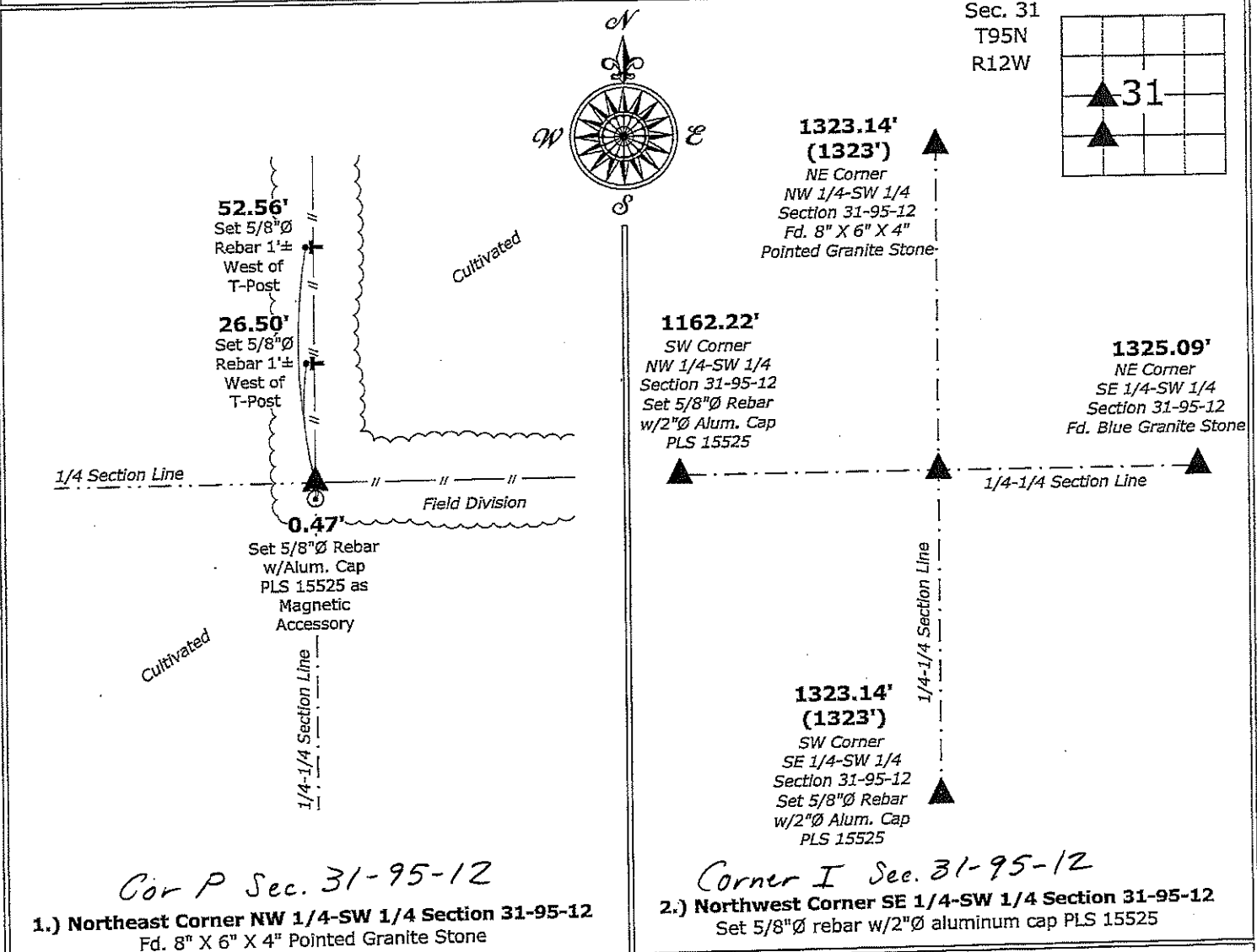
**1.) Northeast Corner NW 1/4-SW 1/4:** Fd. 8" X 6" X 4" Pointed Granite Stone with information obtained on a Survey and Plat made by G.W. Cotant, signed June 22, 1889, in Range Book 11-12, Section 31-95-12, Pages 217-218, and Field Notes & Certificates, Page 137, on file in the Chickasaw County Recorder's office, New Hampton, Iowa.

**2.) Northwest Corner SE 1/4-SW 1/4:** Set 5/8"Ø rebar w/2"Ø aluminum cap PLS 15525 at the intersection of 1/4-1/4 Section Lines.

This Corrective Section Corner Certificate is to Supersede the one Recorded September 9, 2015, Document #2015-1249, to Correct the Range from 13 to 12.

### PLAN - VIEW

(Show a minimum of three reference ties to durable physical objects, relevant monuments and physical conditions that will enable recovery of the corner.)

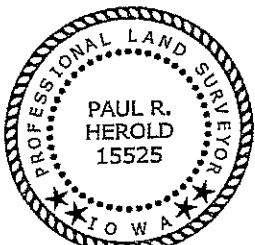


*Cor P Sec. 31-95-12*

**1.) Northeast Corner NW 1/4-SW 1/4 Section 31-95-12**  
 Fd. 8" X 6" X 4" Pointed Granite Stone

*Corner I Sec. 31-95-12*

**2.) Northwest Corner SE 1/4-SW 1/4 Section 31-95-12**  
 Set 5/8"Ø rebar w/2"Ø aluminum cap PLS 15525



I hereby certify that this land surveying document was prepared and the related survey work was performed by me or under my direct personal supervision and that I am a duly licensed Land Surveyor under the laws of the State of Iowa.

*Paul R. Herold* 12-16-22

Paul R. Herold Date:

License number 15525  
 My license renewal date is December 31, 2024.  
 Sheets covered by this seal: Individual sheet only

#### List Corners to be Indexed

| Corners  | Section | Twp. | Range |
|----------|---------|------|-------|
| NE-NW-SW | 31      | 95   | 12    |
| NW-SE-SW | 31      | 95   | 12    |

Project Number: 2015-122

FB: Chickasaw County 7, Pgs. 40-41