

2005-2630
12/05/2005

TeKIPPE ENGINEERING, P.C., 128 South Vine Street, West Union, Iowa 52175 Phone (563) 422-6131

UNITED STATES PUBLIC LAND SURVEY CORNER CERTIFICATE

OF

Land Survey Monuments situated in Section 31, Township 95 North, Range 12 West of the Fifth Principal Meridian, Chickasaw County, Iowa.

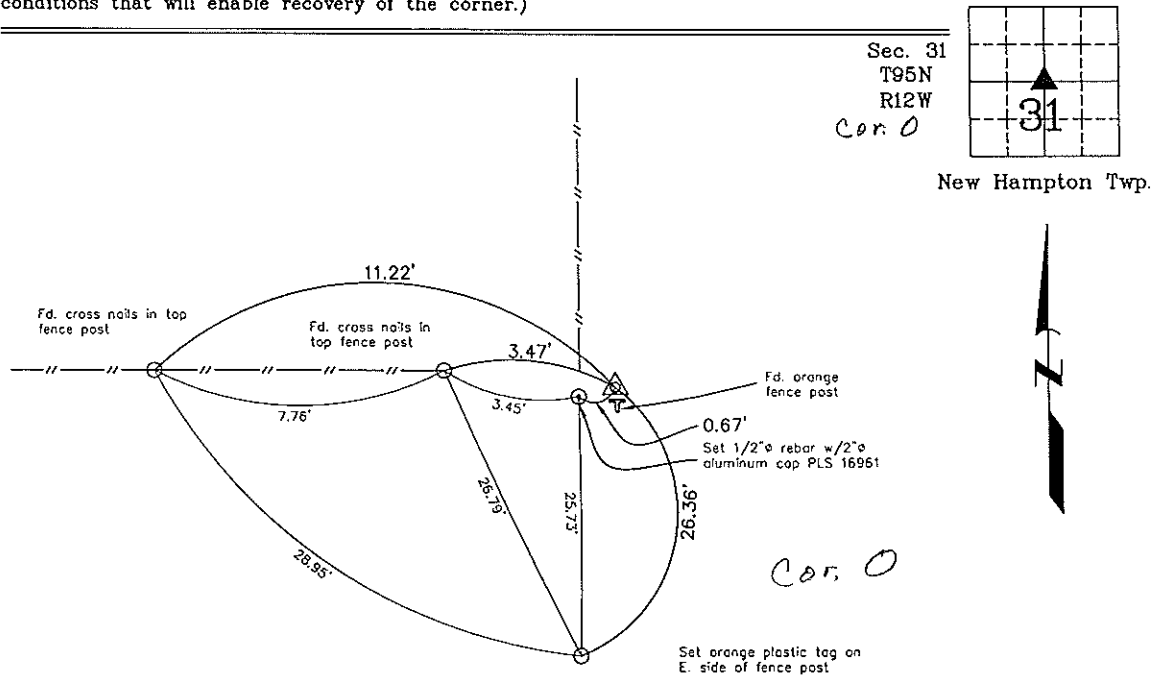
Previously recorded in none in County Recorder's Office.
(book, page, document number, etc.)

(Show reason for preparing this certificate, the evidence and detailed procedures used in establishing the corner positions and monumentation found or placed.)

Monument Description and Remarks: Center Section 31-T95N-R12W: Next to orange fence post, found granite stone as described from ties, placed cut "X" on top, with information obtained from the Iowa Department of Transportation, District 2 Right-of-Way office, Chickasaw County Stone Bk. 5, Pg. 38.

PLAN - VIEW

(Show a minimum of three reference ties to durable physical objects, relevant monuments and physical conditions that will enable recovery of the corner.)



Center Section 31-T95N-R12W
Found granite stone as described from ties, placed cut-X on top



I hereby certify that this land surveying document was prepared and the related survey work was performed by me or under my direct personal supervision and that I am a duly licensed Land Surveyor under the laws of the State of Iowa.

Michael J. Shimak December 1, 2005
Michael J. Shimak Date

License number 16961
My license renewal date is December 31, 2005.
Sheets covered by this seal: Individual

List Corners to be Indexed			
Corners	Section	Twp.	Range
Center	31	95N	12W

Project Number 05224.1S
FB, New Hampton #2 PG. 12
X:\Section Corners\Sec. 31\31-95-12m.dwg