

Instr. Number: 2022-2206
 Recorded: 12/16/2022 at 3:01:39.0 PM
 Pages 1
 County Recording Fee: \$7.00
 Iowa E-Filing Fee: \$3.00
 Combined Fee: \$10.00
 Revenue Tax:
 Shirley Troyna RECORDER
 Chickasaw County, Iowa

Prepared by & Return to: Herold - Reicks Surveying, 10 East Main Street, New Hampton, IA 50659, Ph. 641-394-2725

CORRECTIVE UNITED STATES PUBLIC LAND SURVEY CORNER CERTIFICATE

Land Survey Monuments situated in Section **31**, Township **95** North, Range **12** West of the Fifth Principal Meridian, **Chickasaw** County, Iowa. **1., 2.)** Not previously recorded in the County Recorder's office.

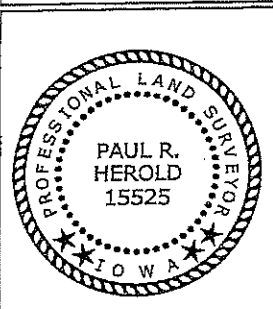
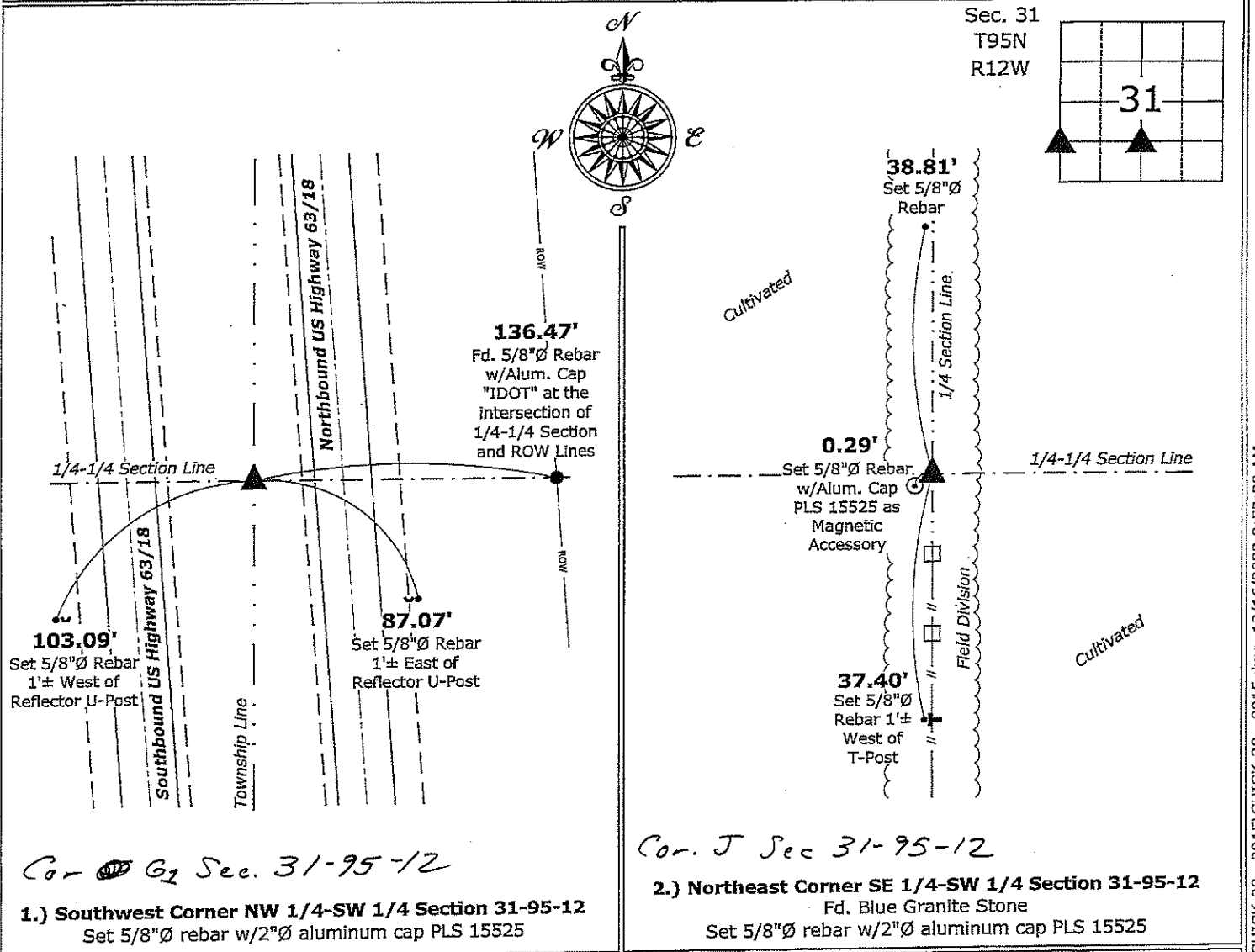
This certificate is being prepared in compliance with Iowa Code Chapter 355.11 because: } 1 & 2 There is no certificate on file for this corner.
 There are no longer three valid ties of record.
 There are changes to reference ties of record.
 There is change of monumentation of record.
 To clarify description of record monument (ties).

- Monument Description and Remarks:
- 1.) Southwest Corner NW 1/4-SW 1/4:** Set 5/8"Ø rebar w/2"Ø aluminum cap PLS 15525 equidistant and on line between the West 1/4 and Southwest Corners of Section 31.
 - 2.) Northeast Corner SE 1/4-SW 1/4:** Fd. Blue Granite Stone equidistant and on line between the Center and South 1/4 Corner of Section 31.

This Corrective Section Corner Certificate is to Supersede the one Recorded September 9, 2015, Document #2015-1248, to Correct the Range from 13 to 12.

PLAN - VIEW

(Show a minimum of three reference ties to durable physical objects, relevant monuments and physical conditions that will enable recovery of the corner.)



I hereby certify that this land surveying document was prepared and the related survey work was performed by me or under my direct personal supervision and that I am a duly licensed Land Surveyor under the laws of the State of Iowa.

Paul R. Herold 12-16-22
 Paul R. Herold Date:
 License number 15525
 My license renewal date is December 31, 2024.
 Sheets covered by this seal: Individual sheet only

List Corners to be Indexed			
Corners	Section	Twp.	Range
SW-NW-SW	31	95	12
NE-SE-SW	31	95	12

Project Number: 2015-122
 FB: Chickasaw County 7, Pgs. 40-41

File: W:\CHICK-28 - 2015\CHICK-28 - 2015.dwg, 12/16/2022 8:52:29 AM