

Section 31-95-12
As referred to in
Engr. Tie Book

FILE NO. 2171
BOOK 2000 PAGE 2171
fee \$6.00
2000 DEC -6 AM 9:02

CINDY MESSERSMITH
CHICKASAW CO. RECORDER

STEVE BUSSE P.O. BOX 241 508 ELM STREET ALLISON, IOWA 50602 319-267-2519

UNITED STATES PUBLIC LAND SURVEY CORNER CERTIFICATE

Land Survey Monuments situated in Section 6, Township 94 North, Range 12 West, of the Fifth Principal Meridian, Chickasaw County, Iowa.

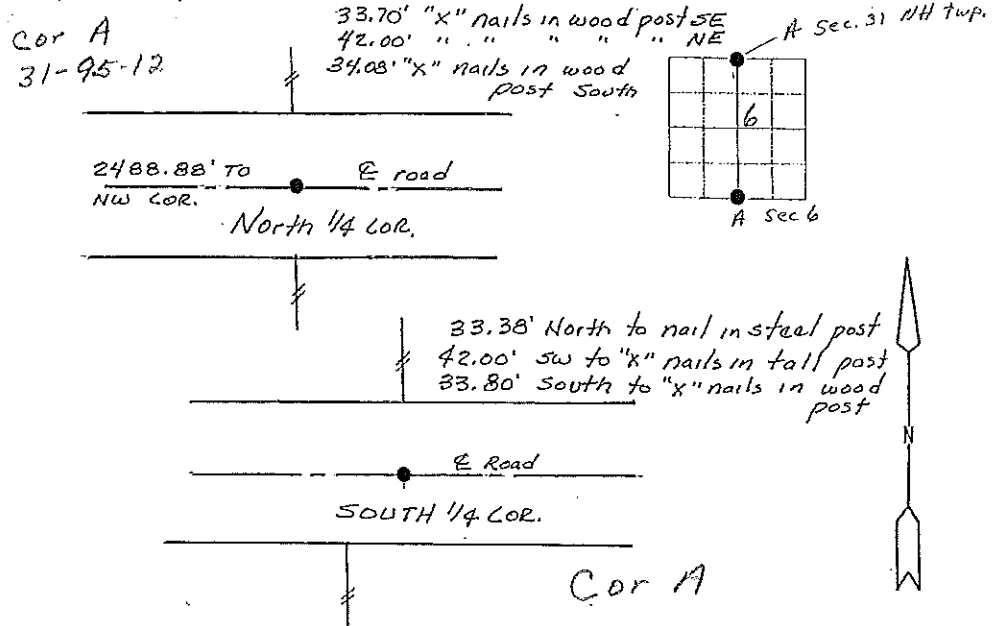
Previously recorded in N/A In County Recorder's Office.
(book, page, document number, etc.)

(Show reason for preparing this certificate, the evidence and detailed procedures used in establishing the corner positions and monumentation found or placed.)

Monument Description and Remarks: Found alum. D.O.T cop at North 1/4 Cor.
On line with fence north and South.
Found 1/2" rebar painted red at South 1/4 corner. On line with
fence to north.

PLAN - VIEW

(Show a minimum of three reference ties to durable physical objects, relevant monuments and physical conditions that will enable recovery of the corner)



I hereby certify that the survey work was completed and this land surveying document was prepared by me or under my direct personal supervision and that I am a duly licensed land surveyor under the laws of the state of Iowa

Signature: Steve Busse
Name typed or printed: STEVE BUSSE

Date: 11/30/00 Reg. No: 9018

My license renewal date is December 31, 2002

SEAL

Corners	List Corners to be Indexed		
	Section	Twp	Range
N1/4	6	94	12
S1/4	6	94	12

Filed 12-8-00