

Section 30-95-12
 As referred to in
 Eng. Tie Book

TEKIPPE ENGINEERING, P.C., 128 South Vine Street, West Union, Iowa 52175 Phone (319) 422-6131

UNITED STATES PUBLIC LAND SURVEY CORNER CERTIFICATE

OF

Land Survey Monuments situated in Section 31³⁰, Township 95 North, Range 12 West, of the Fifth Principal Meridian, CHICKASAW County, Iowa. Previously recorded in NONE in County Recorder's Office.
(book, page, document number, etc.)

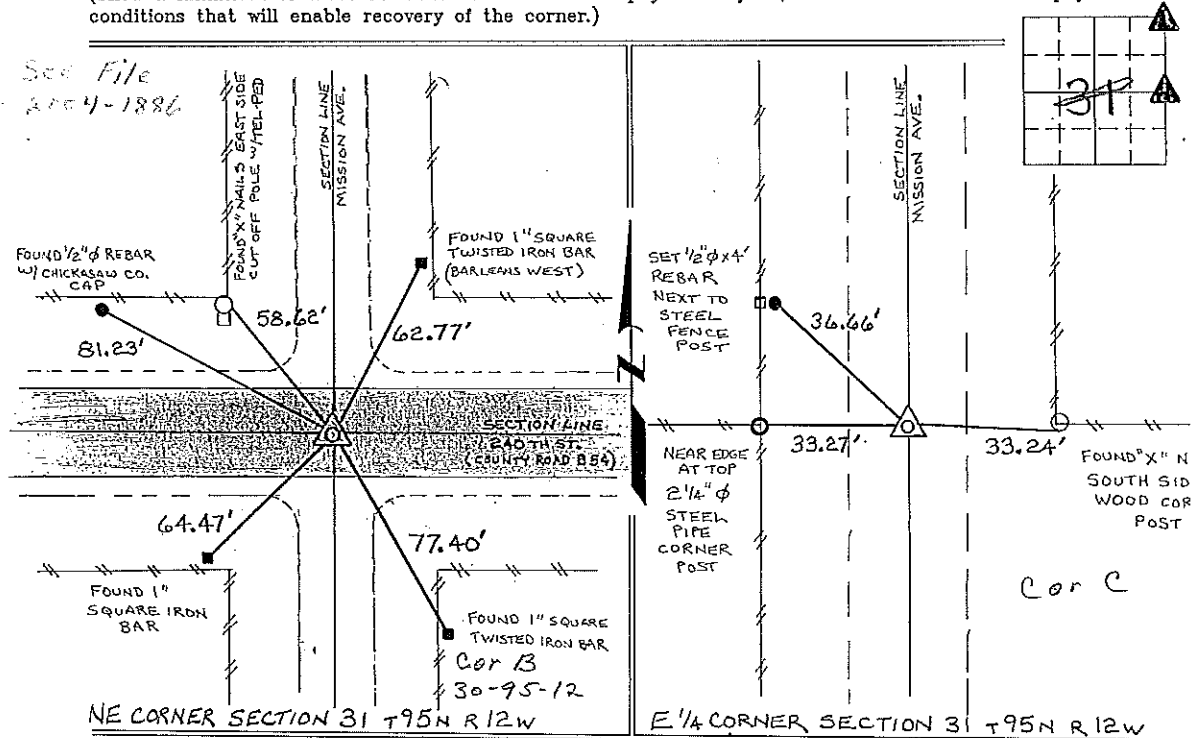
(Show reason for preparing this certificate, the evidence and detailed procedures used in establishing the corner positions and monumentation found or placed.)

Monument Description and Remarks: NE CORNER SECTION 31 T 95 N R 12 W: FOUND PK NAIL FROM TIES OBTAINED FROM THE COUNTY ENGINEERS OFFICE, IN FIELD BOOK "NEW HAMPTON TWP." SECTION 30. (CORNER "B").

E 1/4 CORNER SECTION 31 T 95 N R 12 W: FOUND 3" φ I.D.O.T. ALUMINUM MONUMENT 8" DEEP FROM TIES OBTAINED FROM THE COUNTY ENGINEERS OFFICE, IN FIELD BOOK "NEW HAMPTON TWP." SECTION 31 (CORNER "C").

PLAN - VIEW

(Show a minimum of three reference ties to durable physical objects, relevant monuments and physical conditions that will enable recovery of the corner.)



I hereby certify that the survey work was completed and this certificate was prepared by me or under my direct personal supervision and that I am a duly registered land surveyor under the laws of the state of Iowa.

Signature: Lyle G. Tekippe
 Lyle G. Tekippe
 Date: 8-16-96 Reg. No. 7080
 My Registration Renewal Date is December 31, 1996

Seal



List Corners to be Indexed			
Corners	Section	Twp.	Range
NE	31	95 N	12 W
Corner B	30-95-12		
E 1/4	31	95 N	12 W
Corner C	31-95-12		

Placed in the Book
 8/30/96