

Section 29-95-12
As referred to in
Engr. Tie Book

FILED 2004-1888
RECORDER'S OFFICE
CHICKASAW COUNTY, IOWA
2004 AUG 12 AM 9 29
CINDY MESSERSMITH
COUNTY RECORDER

TEKIPPE ENGINEERING, P.C., 128 South Vine Street, West Union, Iowa 52175 Phone (563) 422-5131

UNITED STATES PUBLIC LAND SURVEY CORNER CERTIFICATE

OF 29
Land Survey Monuments situated in Section 33, Township 95 North, Range 12 West of the Fifth Principal Meridian, CHICKASAW County, Iowa.
Previously recorded in none in County Recorder's Office.
(book, page, document number, etc.)

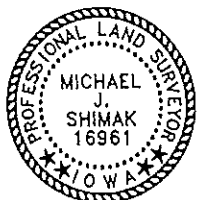
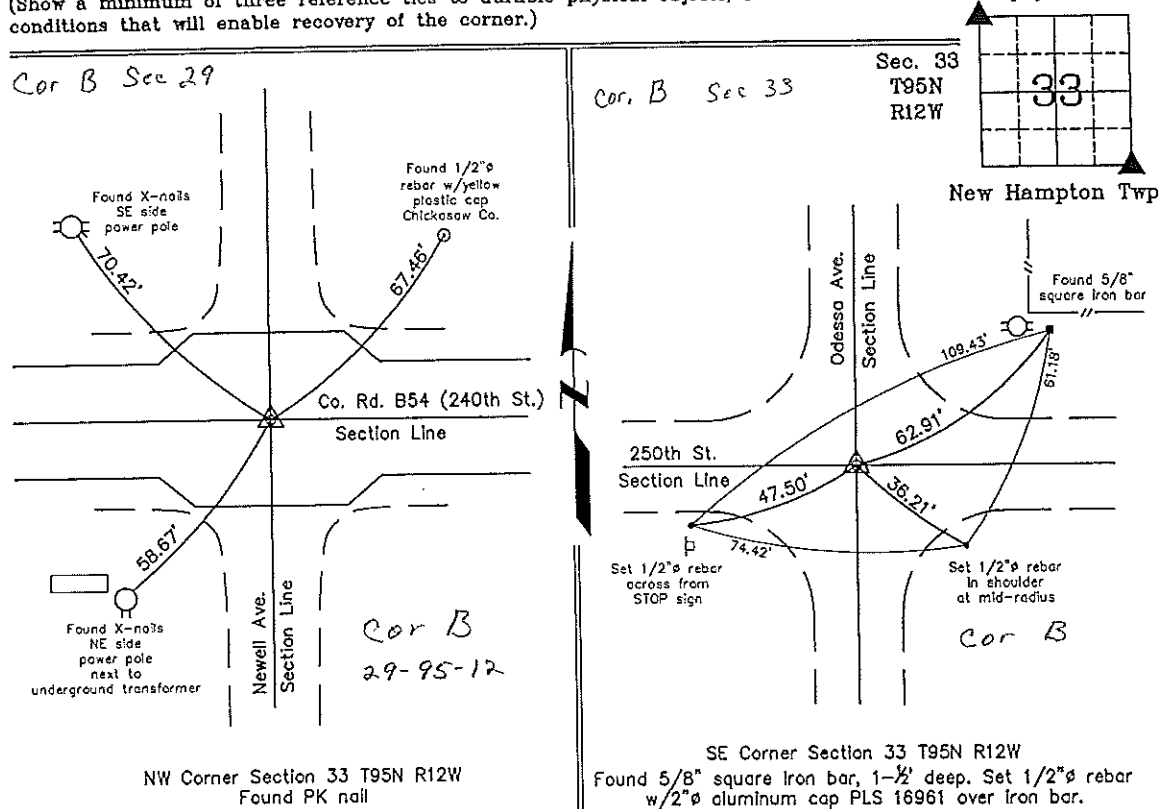
(Show reason for preparing this certificate, the evidence and detailed procedures used in establishing the corner positions and monumentation found or placed.)

Monument Description and Remarks: NW Corner Section 33 T95N R12W Found PK nail with information obtained from the Chickasaw County Engineer's Office in Field Book New Hampton Twp. Corner Ties, Section 29, Corner 'B'.

SE Corner Section 33 T95N R12W: Found 5/8" square iron bar, 1-1/2' deep, with information obtained from the Chickasaw County Engineer's Office in Field Book New Hampton Twp. Corner Ties, Section 33, Corner 'B'. Set 1/2" rebar w/2" aluminum cap PLS 16961 over iron bar.

PLAN - VIEW

(Show a minimum of three reference ties to durable physical objects, relevant monuments and physical conditions that will enable recovery of the corner.)



I hereby certify that this land surveying document was prepared and the related survey work was performed by me or under my direct personal supervision and that I am a duly licensed Land Surveyor under the laws of the State of Iowa.

Michael J. Shimak August 11, 2004
Michael J. Shimak Date
License number 16961
My license renewal date is December 31, 2005.
Sheets covered by this seal: Individual

List Corners to be Indexed			
Corners	Section	Twp.	Range
NW	33	95N	12W
SE	33	95N	12W

X:\Section Corners\Sec. 33\33-95-12ay.dwg
Project Number 04168.LS
FB. 46K PG. 61-66