

2004 AUG 12 AM 9 26

CINDY MESSERSMITH
 COUNTY RECORDER

TeKIPPE ENGINEERING, P.C., 128 South Vine Street, West Union, Iowa 52175 Phone (563) 422-5131

UNITED STATES PUBLIC LAND SURVEY CORNER CERTIFICATE

OF

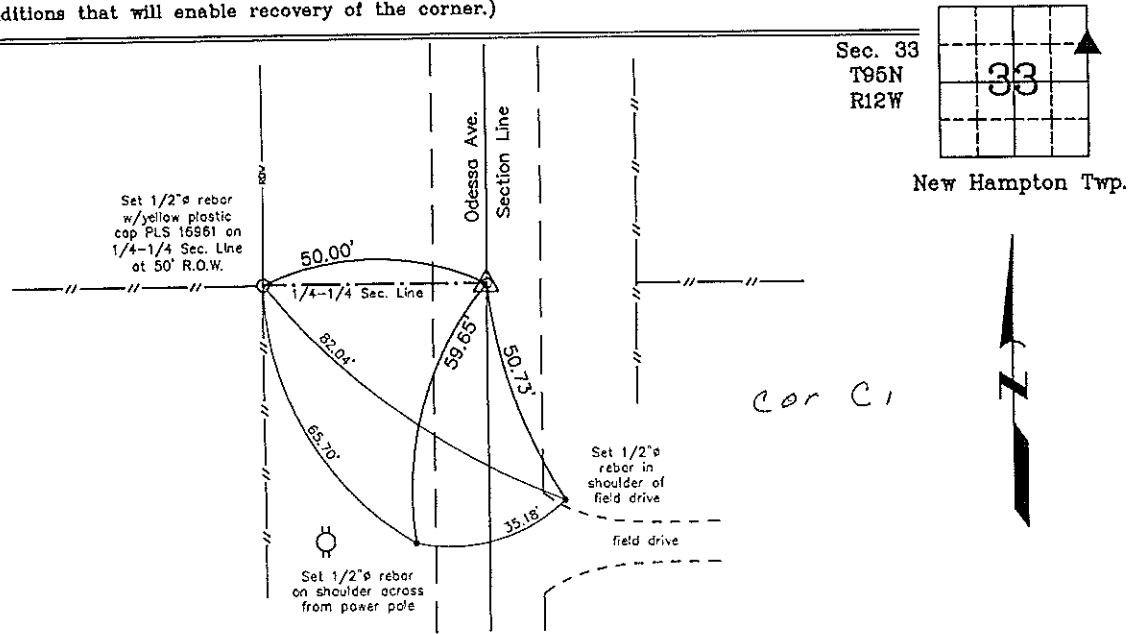
Land Survey Monuments situated in Section 33, Township 95 North, Range 12 West of the Fifth Principal Meridian, CHICKASAW County, Iowa.
 Previously recorded in none in County Recorder's Office.
 (book, page, document number, etc.)

(Show reason for preparing this certificate, the evidence and detailed procedures used in establishing the corner positions and monumentation found or placed.)

Monument Description and Remarks: SE Corner NE 1/4 - NE 1/4 Section 33 T95N R12W:
Set 1/2"Ø rebar w/2"Ø aluminum cap PLS 16961 equidistant and on line between the
E 1/4 Corner and the NE Corner.

PLAN - VIEW

(Show a minimum of three reference ties to durable physical objects, relevant monuments and physical conditions that will enable recovery of the corner.)



SE Corner NE 1/4 - NE 1/4 Section 33 T95N R12W
 Set 1/2"Ø rebar w/2"Ø aluminum cap PLS 16961



I hereby certify that this land surveying document was prepared and the related survey work was performed by me or under my direct personal supervision and that I am a duly licensed Land Surveyor under the laws of the State of Iowa.

Michael J. Shimak August 11, 2004
 Michael J. Shimak Date
 License number 16961
 My license renewal date is December 31, 2005.
 Sheets covered by this seal: Individual

List Corners to be Indexed			
Corners	Section	Twp.	Range
SE-NE-NE	33	95N	12W

X:\Section Corners\Sec. 33\33-95-12\dwg
 Project Number 04158.LS
 FB. 46K PG. 61-86