

Section 34-95-12  
 As referred to in  
 Engr. Tie Book

2003-2313

PREPARED BY ROBERT L. HOLZE MID-WEST LAND SURVEYORS, INC., P.O. BOX 1352, MASON CITY, IOWA 50402-1352, (641)-423-1451

UNITED STATES PUBLIC LAND SURVEY CORNER CERTIFICATE

OF

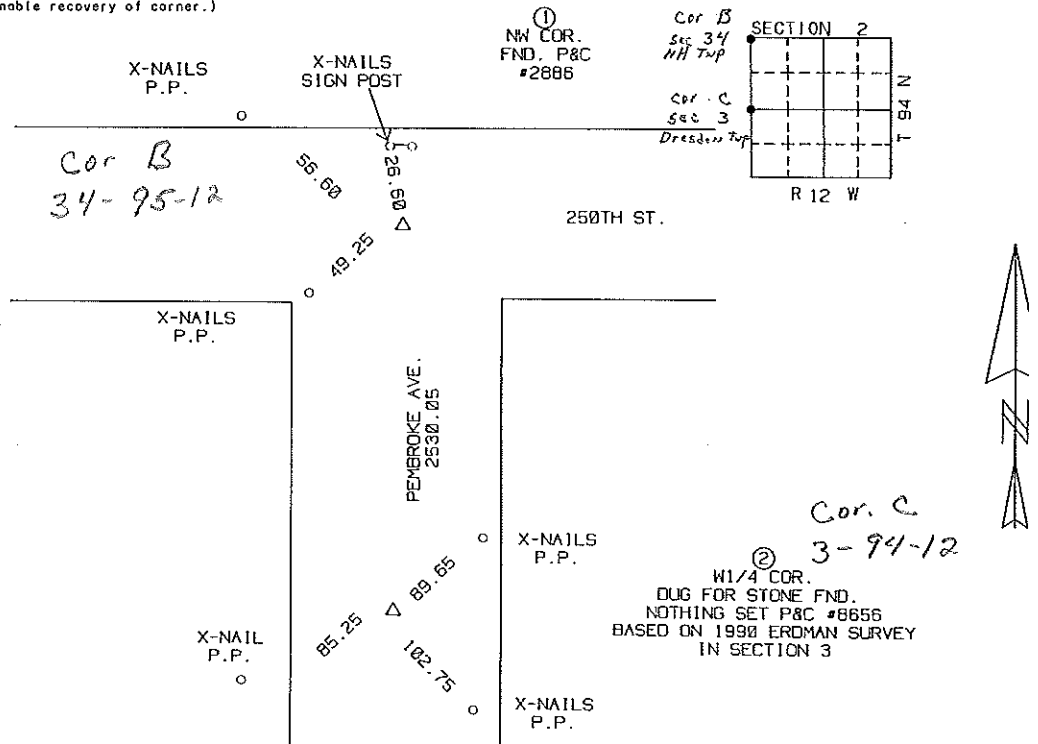
Land Survey Monuments situated in Section 2, Township 94N, Range 12W, of the Fifth Principal Meridian, CHICKASAW County, Iowa Previously recorded in \_\_\_\_\_ in County Recorder's Office.

(book, page, document, number, etc.)  
 (Show reason for preparing this certificate, the evidence and detailed procedures used in establishing the corner positions and monumentation found or placed.)  
 Monument Description and Remarks: \_\_\_\_\_

- ① NORTHWEST CORNER FOUND P&C #2886
- ② W1/4 CORNER DUG FOR STONE FOUND NOTHING SET P&C #8656 BASED ON 1990 ERDMAN SURVEY IN SECTION 3

PLAN-VIEW

(Show a minimum of three reference ties to durable physical objects, relevant monuments and physical conditions that will enable recovery of corner.)



I hereby certify that the survey work was completed and this certificate was prepared by me or under my direct personal supervision and that I am a duly Licensed Surveyor under the laws of the State of Iowa.

Signature: Robert L. Holze  
 Robert L. Holze #8656

Date: 7/21/2003 Reg. No. 8656 IOWA

My registration renewal date is December 31, 2003.

List of Corners to be Indexed			
Corners	Section	Twp.	Range
① NW COR.	2	94N	12W
② W1/4 COR	2	94N	12W

Section 34-95-12  
As referred to in  
Engr. Tie Book

SLSI 9-90

UNITED STATES PUBLIC LAND SURVEY CORNER CERTIFICATE  
OF

Land Survey Monuments situated in Section 2, Township 94 North, Range 12 West, of the Fifth Principal Meridian, Chickasaw County, Iowa. Previously recorded in \_\_\_\_\_ in County Recorder's Office.

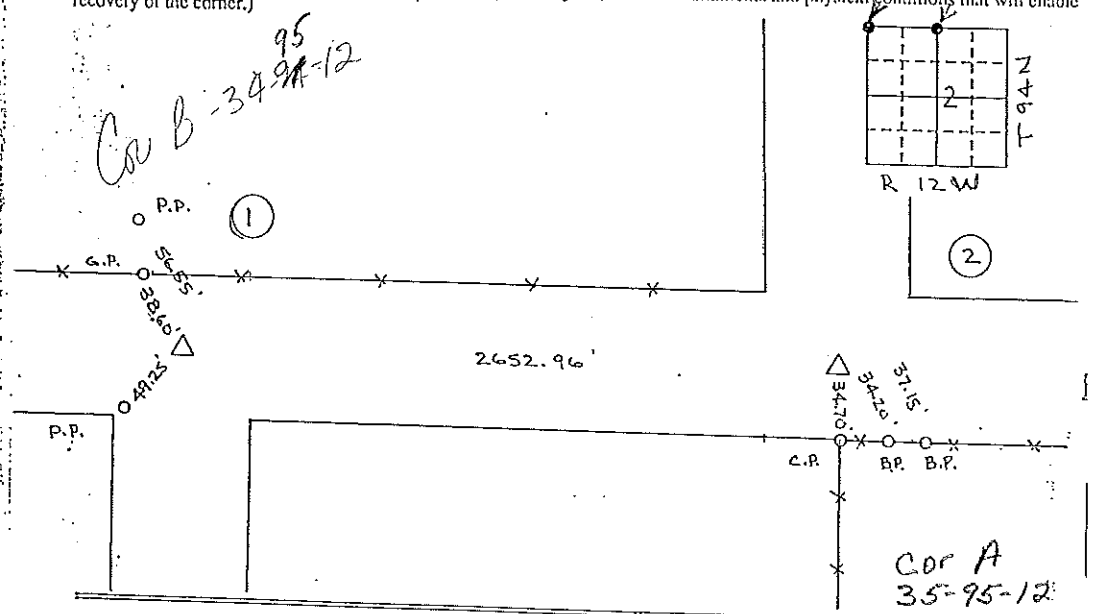
(Show reason for preparing this certificate, the evidence and detailed procedures used in establishing the corner positions and monumentation found or placed.)

Monument Description and Remarks: SURVEY FOR ENRON GAS PIPELINE COMPANY

- 1 = NW Corner Found Pin & Alum. Cap
- 2 = N 1/4 Corner Found " " Pin

PLAN - VIEW

(Show a minimum of three reference ties to durable physical objects, relevant monuments and physical conditions that will enable recovery of the corner.)



I hereby certify that the survey work was completed and this certificate was prepared by me or under my direct personal supervision and that I am a duly registered land surveyor under the laws of the state of Iowa.

Signature: Robert L. Holze  
Name typed or printed: Robert L. Holze  
Date: Oct. 21, 1991 Reg. No. 8656

Corners	List Corners to be Indexed Section	Twp	Range
1 = NW Cor	2	94	12
2 = N 1/4 Cor	2	94	12

Placed in Tie Book 11/18/91  
JFM



PRICE SURVEYING INC.

P. O. BOX 1352  
MASON CITY, IA. 50401  
(515) 423-1451

DOCUMENT No. 00971 FILED FOR RECORD THE 14th DAY OF November 1991 AT 8:37 O'CLOCK A.M. BOOK 148 PAGE 305

RECORDING FEE \$ 5.00 TRANSFER FEE \$ \_\_\_\_\_

STATE OF IOWA, CHICKASAW COUNTY. Mary C. ...