

Chickasaw Co. Recorder
 Cindy Messersmith
Fee Book 2014-1840
 12/30/2014 @0838AM
 SCC SEC COR CERT
 Book: Page: # Pages: 1
 Total Fees: \$7.00

Prepared by & Return to: Herold - Reicks Surveying, 10 East Main Street, New Hampton, IA 50659, Ph. 641-394-2725

UNITED STATES PUBLIC LAND SURVEY CORNER CERTIFICATE

Land Survey Monuments situated in Section 34, Township 95 North, Range 12 West of the Fifth Principal Meridian, Chickasaw County, Iowa. 1.) Previously recorded in Bk. 150, Pg. 371 in the County Recorder's office. 2.) Previously not recorded in the County Recorder's office.

This certificate is being prepared in compliance with Iowa Code Chapter 355.11 because:

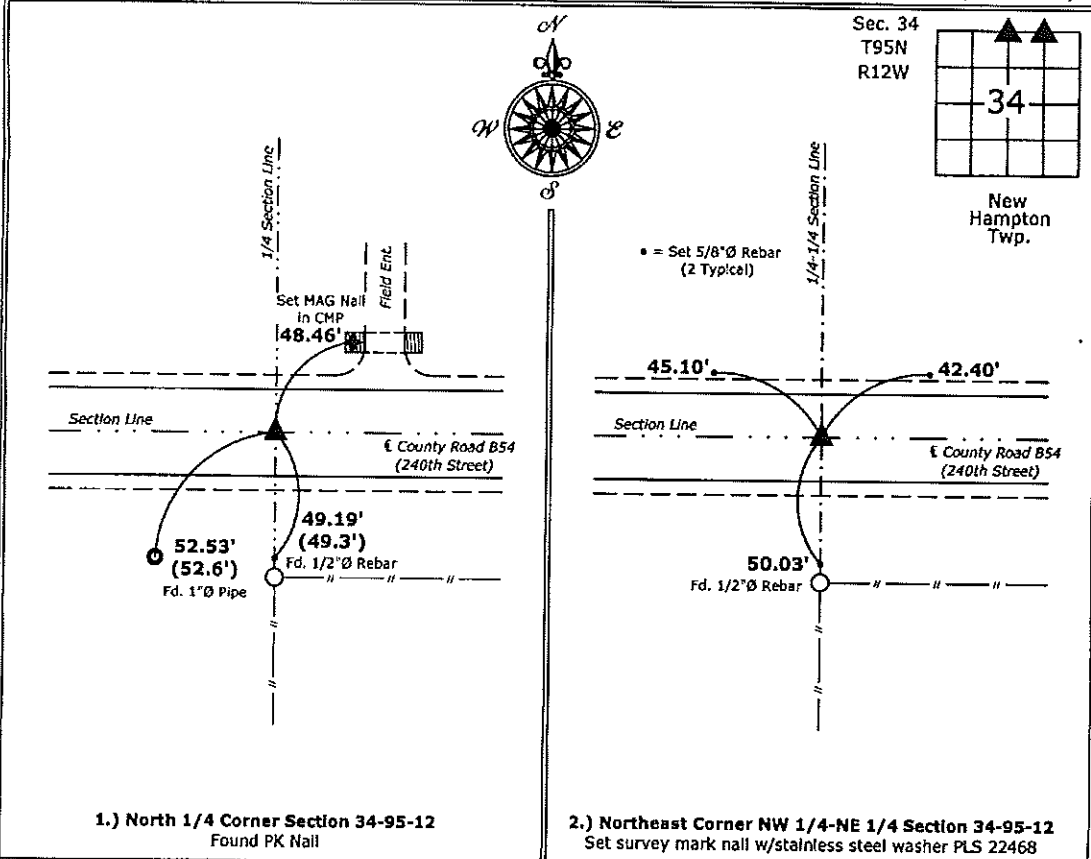
- 2 There is no certificate on file for this corner.
- There are no longer three valid ties of record.
- 1 There are changes to reference ties of record.
- There is change of monumentation of record.
- To clarify description of record monument (ties).

Monument Description and Remarks:

- 1.) **North 1/4 Corner:** Found PK Nail with information obtained from the previous Section Corner Certificate, Bk. 150, Pg. 371 and from the County Engineer's Office.
- 2.) **Northeast Corner NW 1/4-NE 1/4:** Set survey mark nail w/stainless steel washer PLS 22468 equidistant and online between the North 1/4 and Northeast Corners of Section 34.

PLAN - VIEW

(Show a minimum of three reference ties to durable physical objects, relevant monuments and physical conditions that will enable recovery of the corner.)



I hereby certify that this land surveying document was prepared and the related survey work was performed by me or under my direct personal supervision and that I am a duly licensed Land Surveyor under the laws of the State of Iowa.

Isaiah M. Reicks 12-29-14
 Isaiah M. Reicks Date:
 License number 22468
 My license renewal date is December 31, 2014.
 Sheets covered by this seal: Individual sheet only

List Corners to be Indexed			
Corners	Section	Twp.	Range
N 1/4	34	95	12
NE-NW-NE	34	95	12

Project Number: 2014-248
 FB: Chickasaw County 6, Pgs. 67-68

File: S:_CSD Projects\County Control Systems\CHICKASAW\CHICK-35\CHICK-35.dwg, 12/29/2014 1:30:02 PM

Section 34-95-12
 As referred to in
 Engr. Tie Book

Chickasaw Co. Recorder
 Cindy Messersmith
Fee Book 2007-2447
 12/20/2007 80902AM
 SEC SEC COR CERT
 Book: Page: # Pages: 1
 Total Fees: \$7.00

Prepared by: Erdman Engineering, P.C., 708 Commerce Drive, P.O. Box 246, Decorah, Iowa 52101 (563) 382-4194

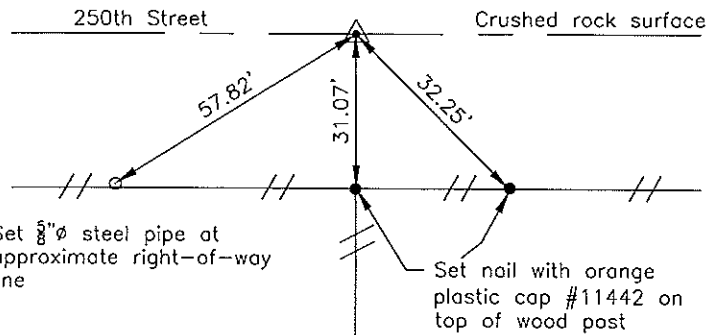
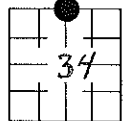
United States Public Land Survey Corner Certificate
 of

Land Survey Monuments situated in Section 34, Township 94, Range 12 West of the 5th Principal Meridian in Chickasaw County, Iowa. Previously recorded in does not apply in the county Recorder's Office.

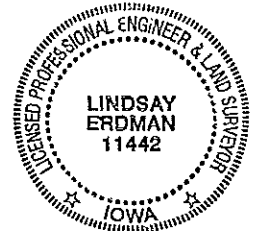
Monument Description and Remarks: This certificate is prepared in accordance with Section 193C of the Code of Iowa. No previous certificate has been filed for this corner location. Based on the Plat of Survey recorded in Book 146 page 203 in the Chickasaw County Recorder's Office we found a steel pipe with 1" diameter aluminum cap #2886 that had been set previously in line with the fence line running south and at the center of the 66' wide county road right-of-way as the S 1/4 Corner of Section 34, Township 95 North, Range 12 West. We used the pipe with cap as the N 1/4 Corner of Section 3, Township 94 North, Range 12 West.

Plan-View

Cor A
 34-95-12



Cor A
 34-95-12



I hereby certify that this land surveying document was prepared and the related survey work was performed by me or under my direct personal supervision and that I am a duly licensed Land Surveyor under the laws of the State of Iowa.

Signature: *Lindsay Erdman*
 Lindsay Erdman, P.E. and P.L.S. Iowa License Number 11442

Date: 12/17/07

My license renewal date is December 31, 2008

Corner(s) to be Indexed

Corner	Section	Township	Range
N 1/4	3	94	12

UNITED STATES PUBLIC LAND SURVEY CORNER CERTIFICATE

OF

Land Survey Monuments situated in Section 34 27, Township 95N, Range 12 West, of the Fifth Principal Meridian, Chickasaw County, Iowa. Previously recorded in _____ in County Recorder's Office.
 (book, page, document number, etc.)

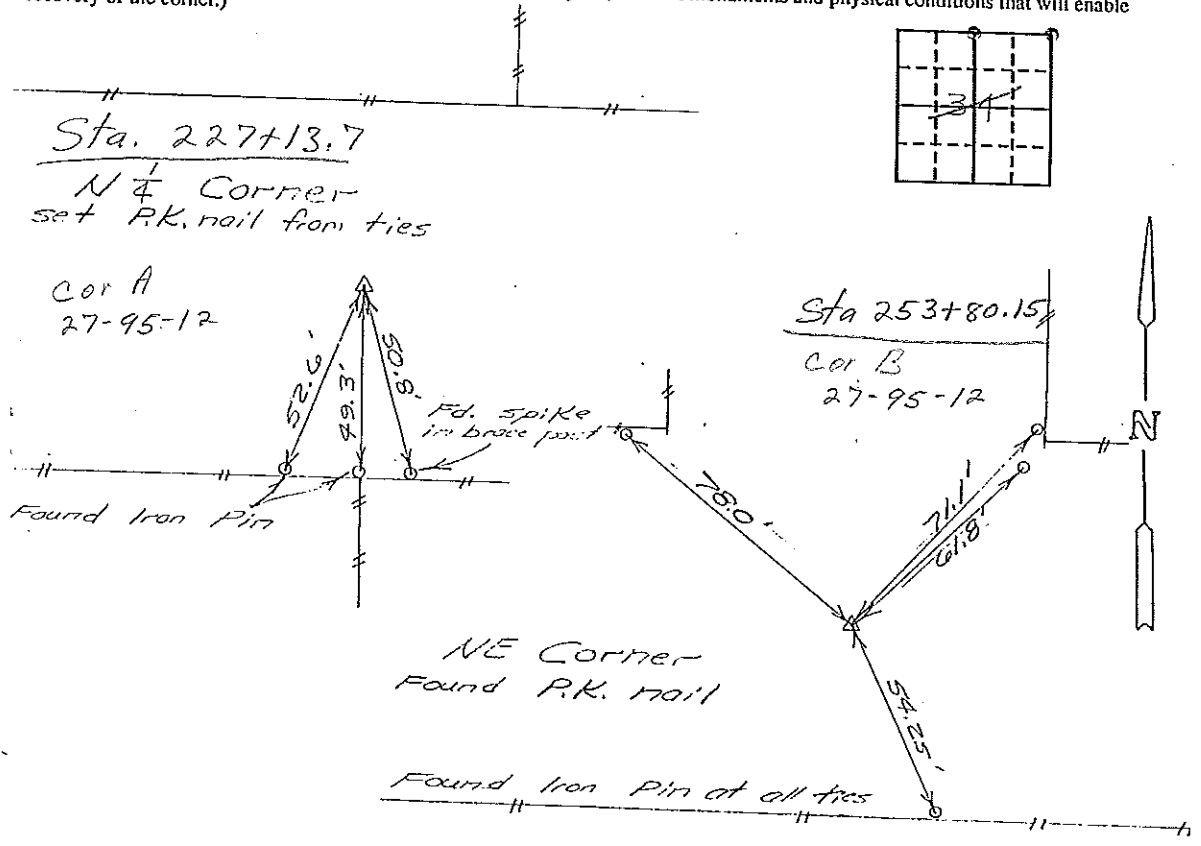
(Show reason for preparing this certificate, the evidence and detailed procedures used in establishing the corner positions and monumentation found or placed.)

Monument Description and Remarks: _____

*Section 27-95-12
 As referred to in
 Engr. Tie Book*

PLAN - VIEW

(Show a minimum of three reference ties to durable physical objects, relevant monuments and physical conditions that will enable recovery of the corner.)



I hereby certify that the survey work was completed and this certificate was prepared by me or under my direct personal supervision and that I am a duly registered land surveyor under the laws of the state of Iowa.
 Signature: L.P. Erdman
 Name typed or printed: L.P. Erdman
 Date: 10-23-92 Reg. No. 2886
 my license expires 12/31/93

Corners	List Corners to be Indexed Section	Twp	Range
N 1/4	34	95N	12W
NE	34	95N	12W



SEAL

*Placed in
 Tie Book 11/6/92*