

Chickasaw Co. Recorder
 Cindy Messersmith
Fee Book 2014-1841
 12/30/2014 @0840AM
 SEC COR CERT Page: # Pages: 1
 Total Fees: \$7.00

Prepared by & Return to: Herold - Reicks Surveying, 10 East Main Street, New Hampton, IA 50659, Ph. 641-394-2725

UNITED STATES PUBLIC LAND SURVEY CORNER CERTIFICATE

Land Survey Monuments situated in Section 34, Township 95 North, Range 12 West of the Fifth Principal Meridian, Chickasaw County, Iowa. 1.) Previously recorded in Bk. 150, Pg. 371 in the County Recorder's office. 2.) Previously not recorded in the County Recorder's office.

This certificate is being prepared in compliance with Iowa Code Chapter 355.11 because:

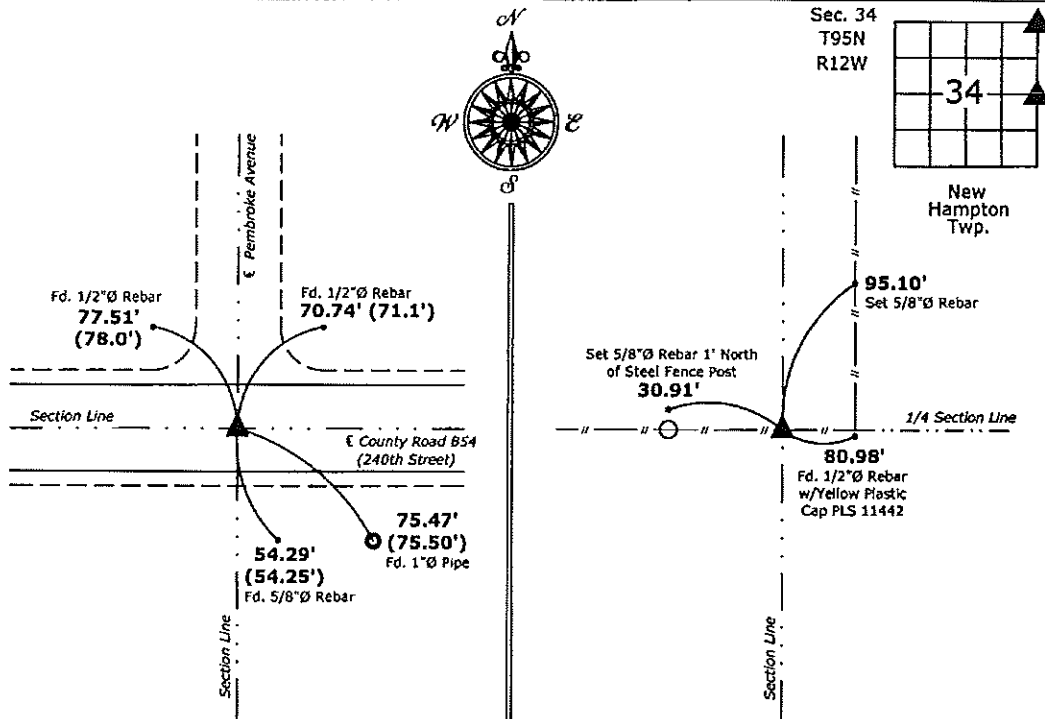
- 2 There is no certificate on file for this corner.
- There are no longer three valid ties of record.
- 1 There are changes to reference ties of record.
- There is change of monumentation of record.
- To clarify description of record monument (ties).

Monument Description and Remarks:

- 1.) **Northeast Corner:** Found PK Nail with information obtained from the previous Section Corner Certificate, Bk. 150, Pg. 371 and from the County Engineer's Office.
- 2.) **East 1/4 Corner:** Found 3/4"Ø rebar w/2"Ø aluminum cap PLS 11442 with information on a Survey and Plat made by Lindsay Erdman, recorded April 17, 2003, Doc. #2003-1194 on file in the County Recorder's Office.

PLAN - VIEW

(Show a minimum of three reference ties to durable physical objects, relevant monuments and physical conditions that will enable recovery of the corner.)



1.) **Northeast Corner Section 34-95-12**
 Found PK Nail

2.) **East 1/4 Corner Section 34-95-12**
 Found 3/4"Ø rebar w/2"Ø aluminum cap PLS 11442



I hereby certify that this land surveying document was prepared and the related survey work was performed by me or under my direct personal supervision and that I am a duly licensed Land Surveyor under the laws of the State of Iowa.
Isaiah M. Reicks 12-29-14
 Isaiah M. Reicks Date:
 License number 22468
 My license renewal date is December 31, 2014.
 Sheets covered by this seal: Individual sheet only

List Corners to be Indexed			
Corners	Section	Twp.	Range
NE	34	95	12
E 1/4	34	95	12

Project Number: 2014-248
 FB: Chickasaw County 6, Pgs. 67-68

File: S:_CAD Projects\County Control Systems\CHICKASAW\CHICK-35.dwg, 12/29/2014 1:30:06 PM

UNITED STATES PUBLIC LAND SURVEY CORNER CERTIFICATE

OF

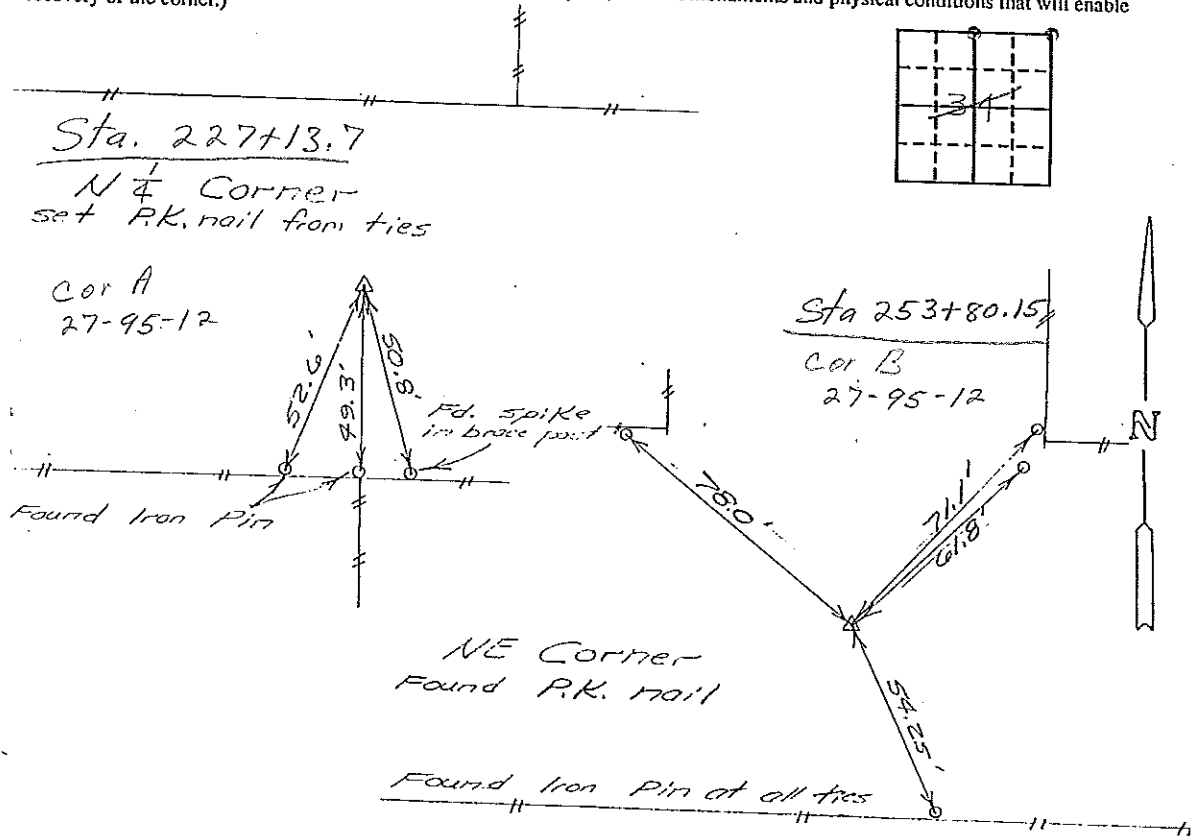
Land Survey Monuments situated in Section 34 27, Township 95N, Range 12 West, of the Fifth Principal Meridian, Chickasaw County, Iowa. Previously recorded in _____ in County Recorder's Office. (book, page, document number, etc.)

(Show reason for preparing this certificate, the evidence and detailed procedures used in establishing the corner positions and monumentation found or placed.)
 Monument Description and Remarks: _____

*Section 27-95-12
 As referred to in
 Engr. Tie Book*

PLAN - VIEW

(Show a minimum of three reference ties to durable physical objects, relevant monuments and physical conditions that will enable recovery of the corner.)



I hereby certify that the survey work was completed and this certificate was prepared by me or under my direct personal supervision and that I am a duly registered land surveyor under the laws of the state of Iowa.
 Signature: L.P. Erdman
 Name typed or printed: L.P. Erdman
 Date: 10-23-92 Reg. No. 2886
 my license expires 12/31/93

Corners	List Corners to be Indexed Section	Twp	Range
N 1/4	34	95N	12W
NE	34	95N	12W



*Placed in
 Tie Book 11/6/92*