

Prepared by & Return to Herold - Reicks Surveying, 18 East Main Street, New Hampton, IA 50658, Ph. 641-394-2725

UNITED STATES PUBLIC LAND SURVEY CORNER CERTIFICATE

Land Survey Monuments situated in Section ²⁶35, Township 95 North, Range 12 West of the Fifth Principal Meridian, Chickasaw County, Iowa. 1., 2.) Previously recorded in Deed Bk. 148, Pg. 276 in the County Recorder's office.

This certificate is being prepared in compliance with Iowa Code Chapter 355.11 because:

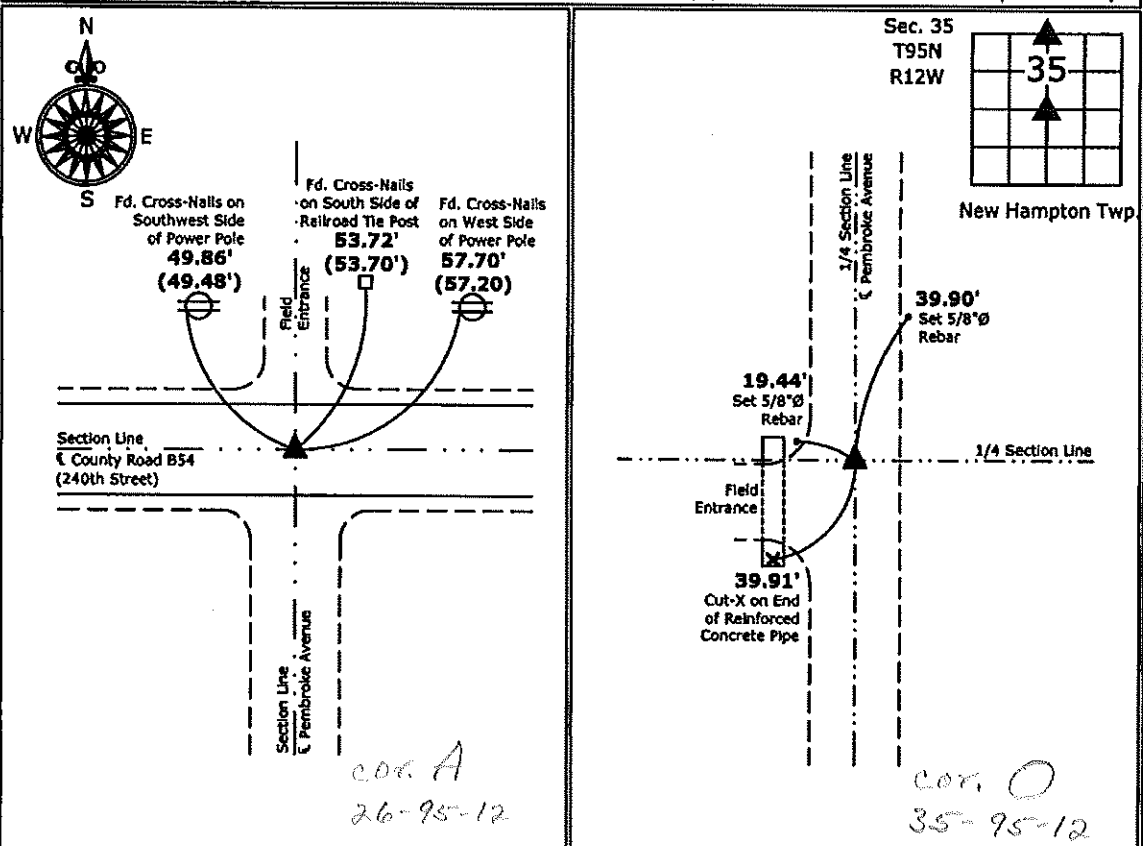
- 1 & 2
- There is no certificate on file for this corner.
 - There are no longer three valid ties of record.
 - There are changes to reference ties of record.
 - There is change of monumentation of record.
 - To clarify description of record monument (ties).

Monument Description and Remarks:

- 1.) North 1/4 Corner: Fd. PK Nail from previous Section Corner Certificate, one tie was missing.
- 2.) Center Section: Fd. 1/2"Ø rebar w/Yellow Plastic Cap PLS 2886 from previous Section Corner Certificate, all ties were missing, set new ties to update corner.

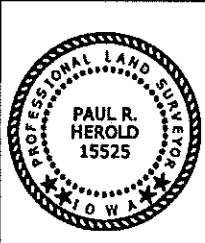
PLAN - VIEW

(Show a minimum of three reference ties to durable physical objects, relevant monuments and physical conditions that will enable recovery of the corner.)



1.) North 1/4 Corner Section 35-95-12
 Fd. PK Nail

2.) Center Section 35-95-12
 Fd. 1/2"Ø rebar w/Yellow Plastic Cap PLS 2886



I hereby certify that this land surveying document was prepared and the related survey work was performed by me or under my direct personal supervision and that I am a duly licensed Land Surveyor under the laws of the State of Iowa.

Paul R. Herold 5-31-12
 Paul R. Herold Date:
 License number 15525
 My license renewal date is December 31, 2012.
 Sheets covered by this seal: Individual sheet only

List Corners to be Indexed			
Corners	Section	Twp.	Range
N 1/4	35	95	12
CTR	35	95	12

Project Number: 2012-037
 FB: Chickasaw County 3, Pgs. 76-78

UNITED STATES PUBLIC LAND SURVEY CORNER CERTIFICATE

SLSI 9-90

OF

Land Survey Monuments situated in Section 35 26, Township 95 NORTH, Range 12 WEST, of the Fifth Principal Meridian, CHICKASAW County, Iowa.
 Previously recorded in DOES NOT APPLY in County Recorder's Office.
 (book, page, document number, etc.)

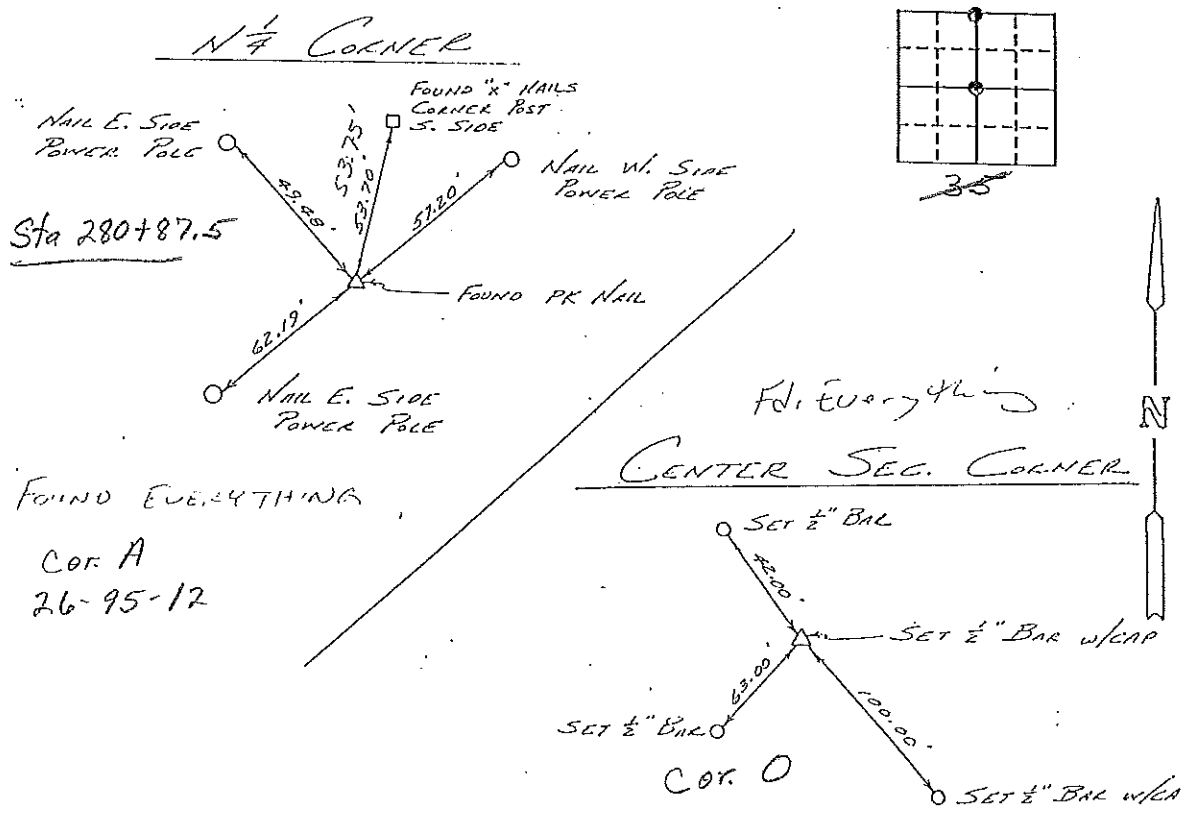
*Section 26-95-12
 As referred to in
 Engr. Tie Book*

(Show reason for preparing this certificate, the evidence and detailed procedures used in establishing the corner positions and monumentation found or placed.)

Monument Description and Remarks: _____

PLAN - VIEW

(Show a minimum of three reference ties to durable physical objects, relevant monuments and physical conditions that will enable recovery of the corner.)



I hereby certify that the survey work was completed and this certificate was prepared by me or under my direct personal supervision and that I am a duly registered land surveyor under the laws of the state of Iowa.
 Signature: [Signature]
 Name typed or printed: L. P. ERDMAN
 Date: 12-03-91 Reg. No. 2886

Corners	List Corners to be Indexed	Section	Twp	Range
N 1/4	35	95 N	12 W	
COR A	26-95-12			
CENTER	"	"	"	"
COR O	35-95-12			



SEAL

*Placed in tie Book
 12/13/96*