

Herold - Reicks Surveying, 25 1/2 East Main Street, Suite 204, New Hampton, IA 50659, Ph. 641-394-2725

UNITED STATES PUBLIC LAND SURVEY CORNER CERTIFICATE

Land Survey Monuments situated in Section **36**, Township **95** North, Range **12** West of the Fifth Principal Meridian, **Chickasaw** County, Iowa. Not previously recorded in the County Recorder's office.

This certificate is being prepared in compliance with Iowa Code Chapter 355.11 because:

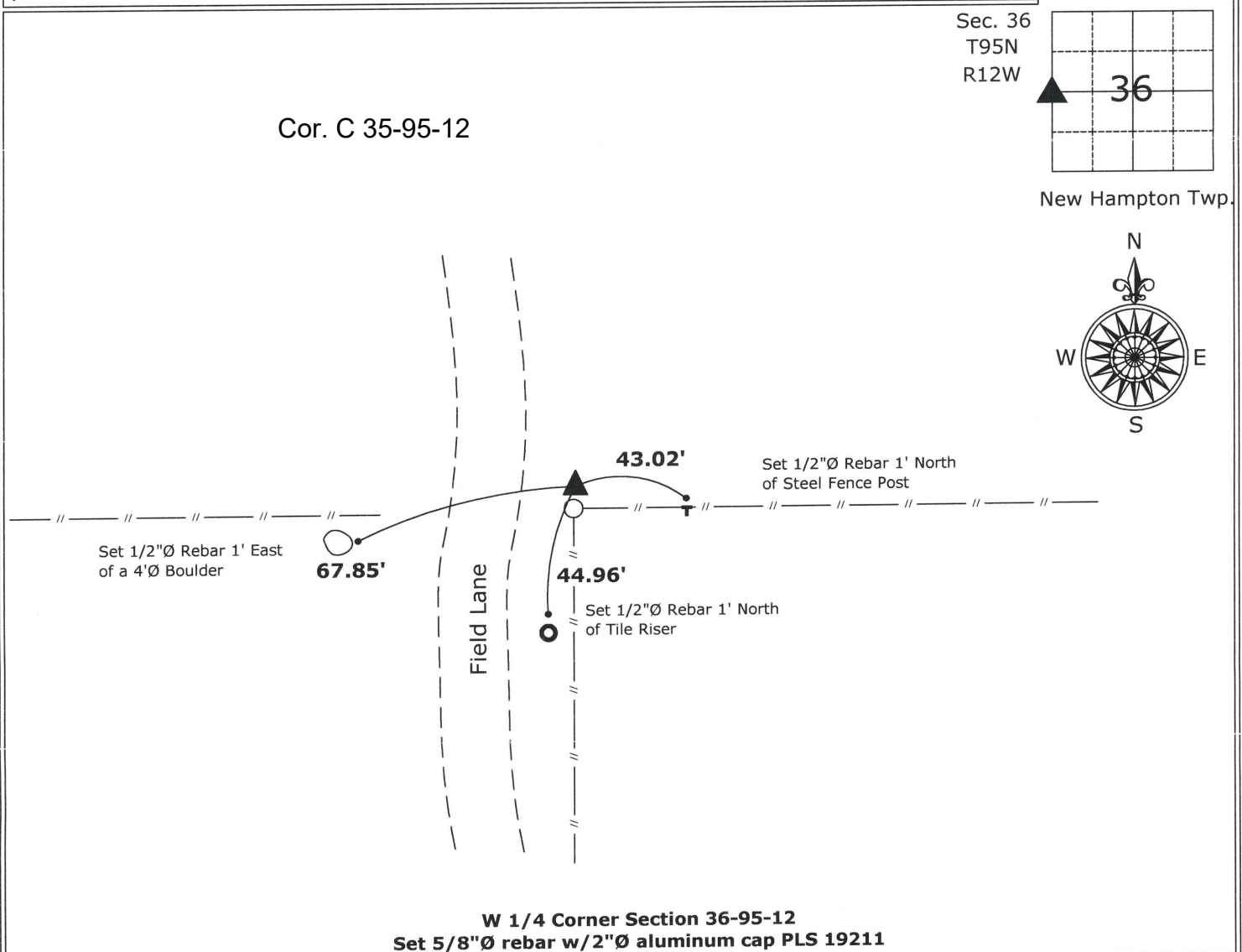
- There is no certificate on file for this corner.
- There are no longer three valid ties of record.
- There are changes to reference ties of record.
- There is change of monumentation of record.
- To clarify description of record monument (ties).

Monument Description and Remarks:

W 1/4 Corner: Set 5/8"Ø Rebar w/2"Ø Alum. Cap PLS 19211 at an existing fence corner after comparing the position to adjacent corners in the Section, there are no records of the perpetuation of a monument at this position.

PLAN - VIEW

(Show a minimum of three reference ties to durable physical objects, relevant monuments and physical conditions that will enable recovery of the corner.)



W 1/4 Corner Section 36-95-12
Set 5/8"Ø rebar w/2"Ø aluminum cap PLS 19211



I hereby certify that this land surveying document was prepared and the related survey work was performed by me or under my direct personal supervision and that I am a duly licensed Land Surveyor under the laws of the State of Iowa.

Kirk D. Reicks 10-12-10
Kirk D. Reicks Date:

License number 19211
My license renewal date is December 31, 2008.
Sheets covered by this seal: Individual sheet only

List Corners to be Indexed			
Corners	Section	Twp.	Range
W 1/4	36	95	12

Project Number: 2010-059

FB: Chickasaw County 3, Pg. 20