

Instr. Number: 2019-1485  
 Recorded: 10/3/2019 at 10:57:25.0 AM  
 Pages 1  
 County Recording Fee: \$7.00  
 Iowa E-Filing Fee: \$3.00  
 Combined Fee: \$10.00  
 Revenue Tax:  
 Shirley Troyna RECORDER  
 Chickasaw County, Iowa

Prepared by & Return to: Herald - Reicks Surveying, 10 East Main Street, New Hampton, IA 50659, Ph. 641-394-2725

### United States Public Land Survey Corner Certificate

Land Survey Monument situated in  
 Section 2, Township 94 North, Range 12 West of the Fifth Principal Meridian, Chickasaw County, Iowa.  
 On file in Book 148, Page 205 in the County Recorder's office.

This certificate is being prepared in compliance with Iowa Code Chapter 355.11 because:

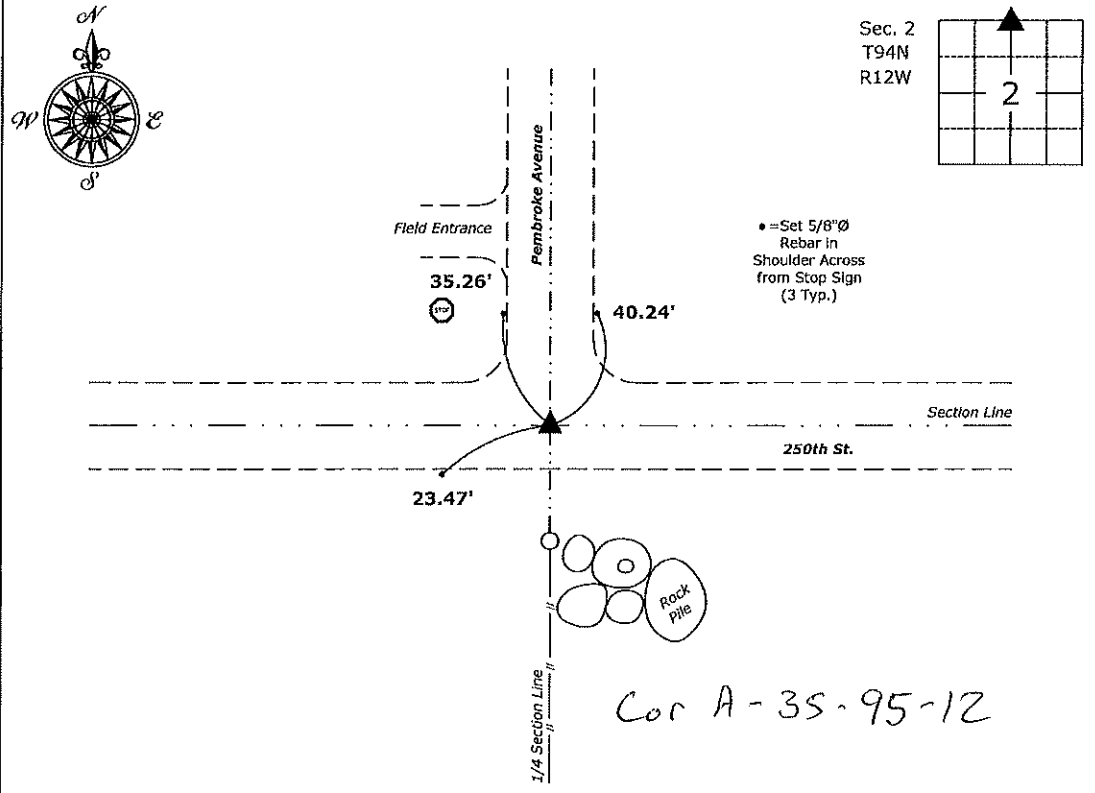
- There is no certificate on file for this corner.
- There are no longer three valid ties of record.
- There are changes to reference ties of record.
- There is change of monumentation of record.
- To clarify description of record monument (ties).

**Monument Description and Remarks:**

**North 1/4 Corner:** Found 1/2" Square Bar with Information obtained from the previously recorded Section Corner Certificate.

### Plan View

(Show a minimum of three reference ties to durable physical objects, relevant monuments and physical conditions that will enable recovery of the corner.)



**North 1/4 Corner of Section 2-94-12**  
 Found 1/2" Square Bar



I hereby certify that this land surveying document was prepared and the related survey work was performed by me or under my direct personal supervision and that I am a duly licensed Land Surveyor under the laws of the State of Iowa.  
*Kirk D. Reicks* 10-3-19  
 Kirk D. Reicks Date:  
 License number 19211  
 My license renewal date is December 31, 2020.  
 Sheets covered by this seal: Individual sheet only

List Corner to be Indexed			
Corner	Section	Twp.	Range
N 1/4	2	94	12
Project Number: 2019-102			
FB: Chickasaw 9, Pgs. 61-62			

File: S:\\_Projects - NHO\County Control Systems - NHO\CHICKASAW\CHICK-43 (F-Burg)\CHICK-43.dwg, 10/3/2019 10:32:16 AM

Section 34-95-12  
 As referred to in  
 Engr. Tie Book

SLSI 9-90

UNITED STATES PUBLIC LAND SURVEY CORNER CERTIFICATE  
 OF

Land Survey Monuments situated in Section 2, Township 94 North, Range 12 West, of the Fifth Principal Meridian, Chickasaw County, Iowa.  
 Previously recorded in \_\_\_\_\_ in County Recorder's Office.

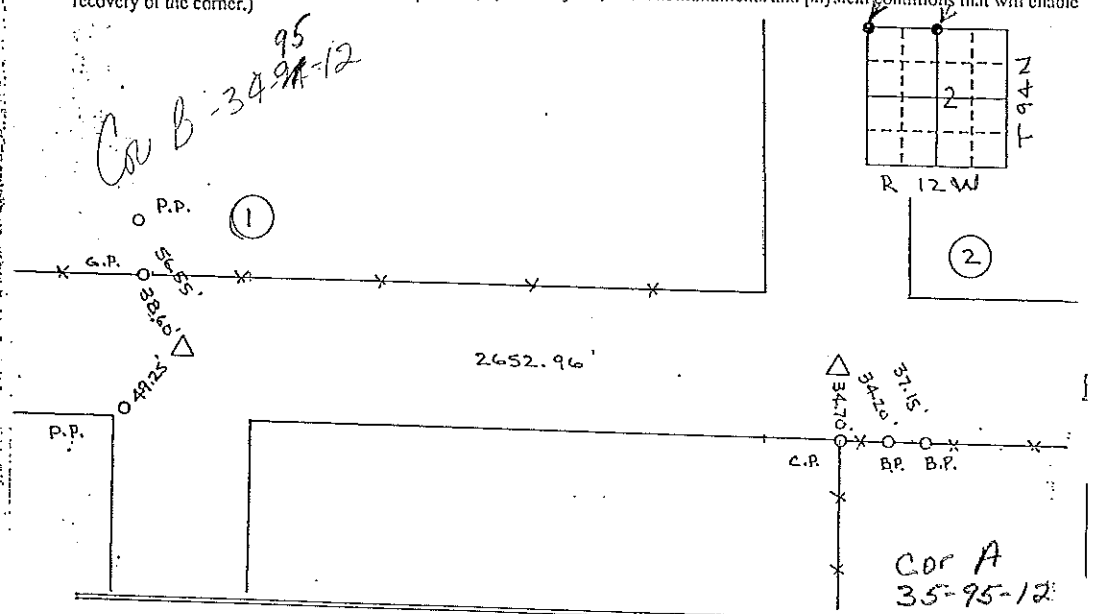
(Show reason for preparing this certificate, the evidence and detailed procedures used in establishing the corner positions and monumentation found or placed.)

Monument Description and Remarks: SURVEY FOR ENRON GAS PIPELINE COMPANY

- 1 = NW Corner Found Pin & Alum. Cap
- 2 = N 1/4 Corner Found " " Pin

PLAN - VIEW

(Show a minimum of three reference ties to durable physical objects, relevant monuments and physical conditions that will enable recovery of the corner.)



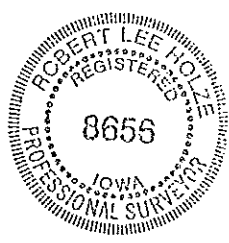
I hereby certify that the survey work was completed and this certificate was prepared by me or under my direct personal supervision and that I am a duly registered land surveyor under the laws of the state of Iowa.

Signature: Robert L. Holze  
 Name typed or printed: Robert L. Holze  
 Date: Oct. 21, 1991 Reg. No. 8656

Corners	List Corners to be Indexed Section	Twp	Range
1 = NW Cor	2	94	12
2 = N 1/4 Cor	2	94	12

Placed in Tie Book 11/18/91  
 JFM

SEAL



**PRICE SURVEYING INC.**

P. O. BOX 1352  
 MASON CITY, IA. 50401  
 (515) 423-1451

DOCUMENT No. 00971 FILED FOR RECORD THE 14th DAY OF November 1991 AT 8:37 O'CLOCK A.M. BOOK 148 PAGE 305

RECORDING FEE \$ 5.00  
 TRANSFER FEE \$ \_\_\_\_\_

STATE OF IOWA, CHICKASAW COUNTY.  
 Mary C. ...