

Prepared by & Return to Herold - Reicks Surveying, 18 East Main Street, New Hampton, IA 50658, Ph. 641-394-2725

UNITED STATES PUBLIC LAND SURVEY CORNER CERTIFICATE

Land Survey Monuments situated in Section ²⁵ 30, Township ¹² 95 North, Range 11 West of the Fifth Principal Meridian, Chickasaw County, Iowa. 1.) & 2.) Not previously recorded in the County Recorder's office.

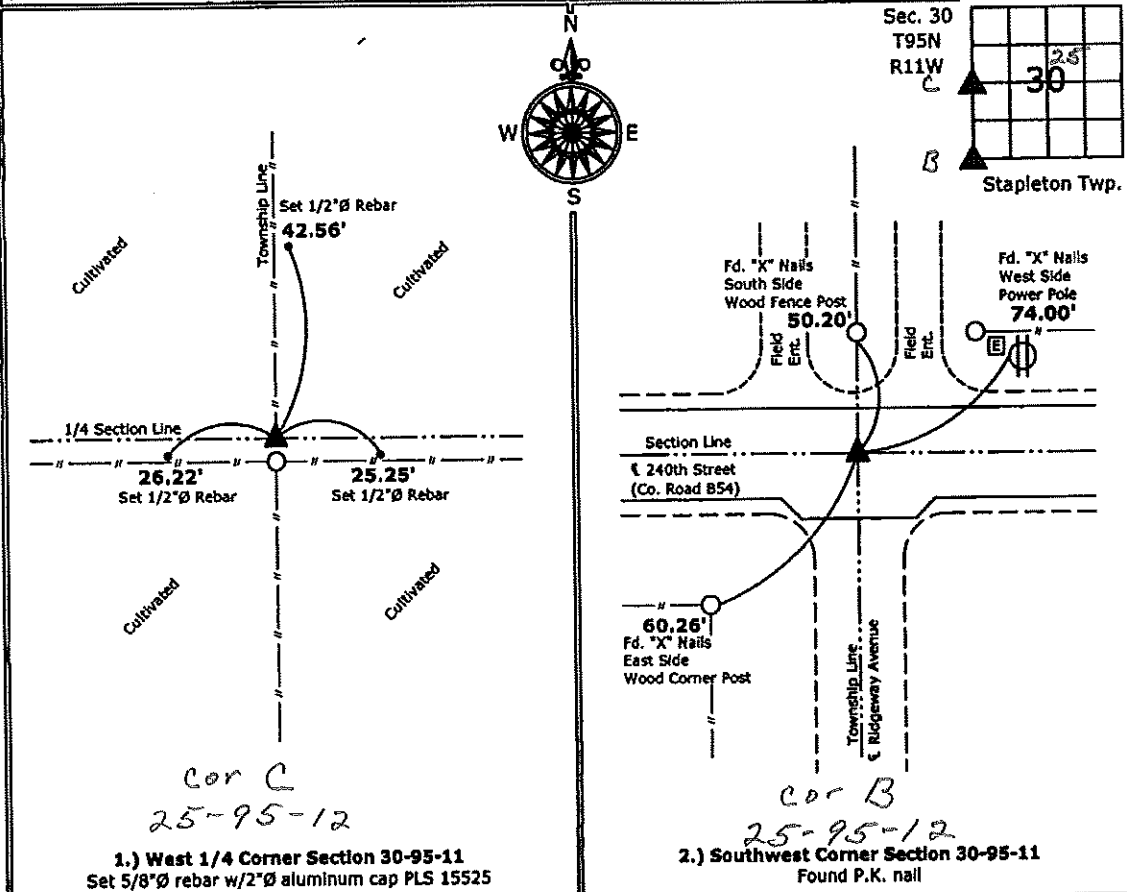
This certificate is being prepared in compliance with Iowa Code Chapter 355.11 because: { 1.) & 2.) There are no certificates on file for these corners.
 There are no longer three valid ties of record.
 There are changes to reference ties of record.
 There is change of monumentation of record.
 To clarify description of record monument (ties).

Monument Description and Remarks:

- 1.) **West 1/4 Corner:** Set 5/8"Ø rebar with 2"Ø aluminum cap PLS 15525 at intersection of existing possession line fences, there is no record of the perpetuation of a monument at this corner, accepted the fence corner as best evidence.
- 1.) **Southwest Corner:** Found P.K. nail from information obtained from the County Engineer's Office in Field Book, New Hampton Twp. Corner Ties, Section 25, Corner "B".

PLAN - VIEW

(Show a minimum of three reference ties to durable physical objects, relevant monuments and physical conditions that will enable recovery of the corner.)



1.) West 1/4 Corner Section 30-95-11
 Set 5/8"Ø rebar w/2"Ø aluminum cap PLS 15525

2.) Southwest Corner Section 30-95-11
 Found P.K. nail



I hereby certify that this land surveying document was prepared and the related survey work was performed by me or under my direct personal supervision and that I am a duly licensed Land Surveyor under the laws of the State of Iowa.

Paul R. Herold 4-26-11
 Paul R. Herold Date:
 License number 15525
 My license renewal date is December 31, 2012.
 Sheets covered by this seal: Individual sheet only

| List Corners to be Indexed | | | |
|----------------------------|---------|------|-------|
| Corners | Section | Twp. | Range |
| W 1/4 | 30 | 95 | 11 |
| SW | 30 | 95 | 11 |

Project Number: 2011-033
 FB: Chickasaw County 3, Pgs. 33-68

UNITED STATES PUBLIC LAND SURVEY CORNER CERTIFICATE

OF

Land Survey Monuments situated in Section 26, Township 95 North, Range 12 West, of the Fifth Principal Meridian, CHICKASAW County, Iowa. Previously recorded in NONE in County Recorder's Office.

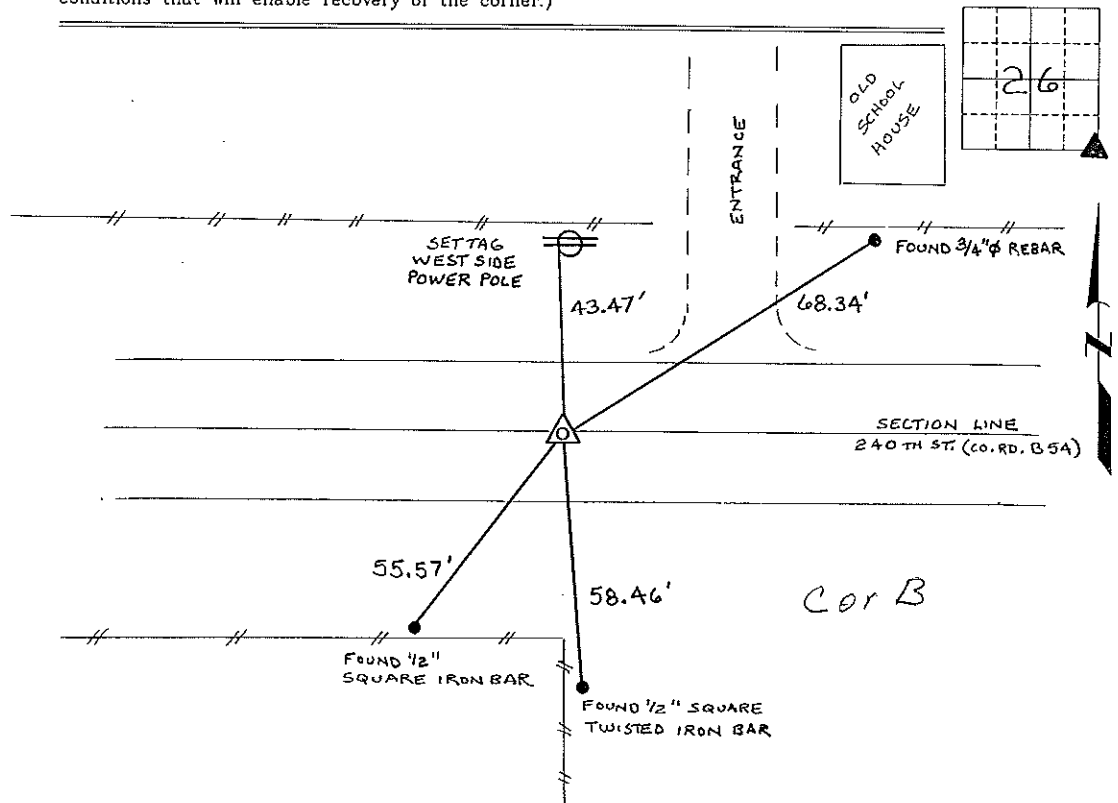
(book, page, document number, etc.)

(Show reason for preparing this certificate, the evidence and detailed procedures used in establishing the corner positions and monumentation found or placed.)

Monument Description and Remarks: SE CORNER SECTION 26 T95N R12W:
FOUND PK NAIL, FROM TIES OBTAINED FROM THE COUNTY ENGINEERS OFFICE,
IN FIELD BOOK "NEW HAMPTON TWP CORNER TIES", IT IS TO BE NOTED THAT ON
THE OPPOSITE PAGE OF THE TIES, A DISTANCE FROM THE S 1/4 COR. TO THE SE COR.
IS SHOWN AS 36.94 CHAINS (2438.04 FEET) OUR DISTANCE IS 2435.75', WE ALSO SHOT
ALL OF THE POSSESSION LINE FENCES IN THIS HALF MILE IN SECTION 26 & 35, THEY
CHECKED REMARKABLY CLOSE WITH THE DEEDS, THIS WAS DONE TO CONFIRM THE SHORT HALF MI

PLAN - VIEW

(Show a minimum of three reference ties to durable physical objects, relevant monuments and physical conditions that will enable recovery of the corner.)



I hereby certify that this land surveying document was prepared and the related survey work was performed by me or under my direct personal supervision and that I am a duly licensed Land Surveyor under the laws of the State of Iowa.

Lyle G. TeKippe 12-18-96
 Lyle G. TeKippe Date
 License number 7060
 My license renewal date is December 31, 1996.
 Sheets covered by this seal: Individual

| List Corners to be Indexed | | | |
|----------------------------|---------|------|-------|
| Corners | Section | Twp. | Range |
| SE | 26 | 95N | 12W |

Corner B section 26-95-12
 Placed in tie book 1/3/97