

Prepared by & Return to: Herold - Rescks Surveying, 19 East Main Street, New Hampton, IA 50659, Ph. 641-394-2725

UNITED STATES PUBLIC LAND SURVEY CORNER CERTIFICATE

Land Survey Monuments situated in Section 35, Township 95 North, Range 12 West of the Fifth Principal Meridian, Chickasaw County, Iowa. 1., 2.) Not previously recorded in the County Recorder's office.

This certificate is being prepared in compliance with Iowa Code Chapter 355.11 because:

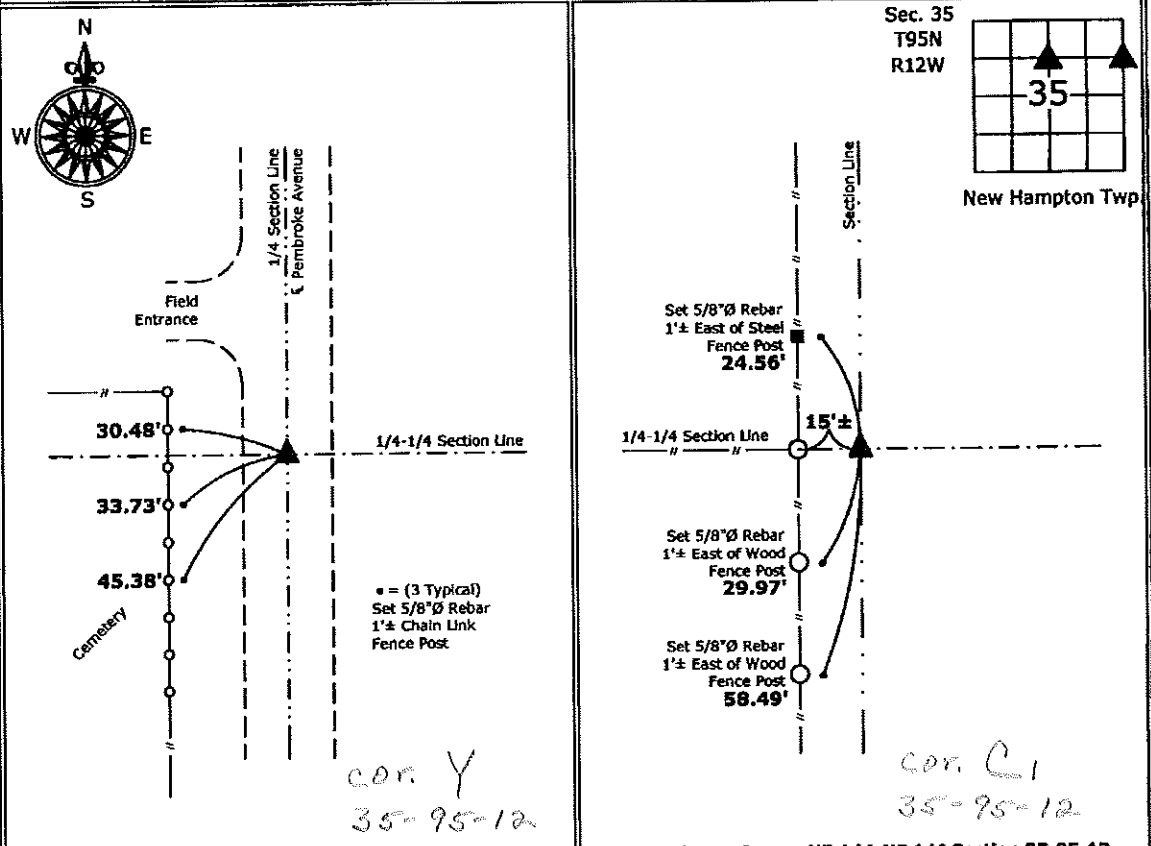
1 & 2 There is no certificate on file for this corner.
 There are no longer three valid ties of record.
 There are changes to reference ties of record.
 There is change of monumentation of record.
 To clarify description of record monument (ties).

Monument Description and Remarks:

- Southwest Corner NW 1/4-NE 1/4:** Set 5/8"Ø rebar w/2"Ø aluminum cap PLS 15525 equidistant and online between the North 1/4 Corner and Center of Section 35.
- Southeast Corner NE 1/4-NE 1/4:** Set 5/8"Ø rebar w/2"Ø aluminum cap PLS 15525 equidistant and online between the Northeast and East 1/4 Corners of Section 35.

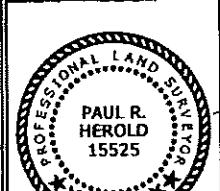
PLAN - VIEW

(Show a minimum of three reference ties to durable physical objects, relevant monuments and physical conditions that will enable recovery of the corner.)



1.) Southwest Corner NW 1/4-NE 1/4 Section 35-95-12
 Set 5/8"Ø rebar w/2"Ø aluminum cap PLS 15525

2.) Southeast Corner NE 1/4-NE 1/4 Section 35-95-12
 Set 5/8"Ø rebar w/2"Ø aluminum cap PLS 15525



I hereby certify that this land surveying document was prepared and the related survey work was performed by me or under my direct personal supervision and that I am a duly licensed Land Surveyor under the laws of the State of Iowa.

Paul R. Herold 5-31-12
 Paul R. Herold Date:
 License number 15525

List Corners to be Indexed			
Corners	Section	Twp.	Range
SW-NW-NE	35	95	12
SE-NE-NE	35	95	12