

Prepared by & Return to Herold - Recks Surveying, 10 East Main Street, New Hampton, IA 50659, Ph. 641-394-2725

**UNITED STATES PUBLIC LAND SURVEY CORNER CERTIFICATE**

Land Survey Monuments situated in Section 35, Township 95 North, Range 12 West of the Fifth Principal Meridian, Chickasaw County, Iowa. Not previously recorded in the County Recorder's office.

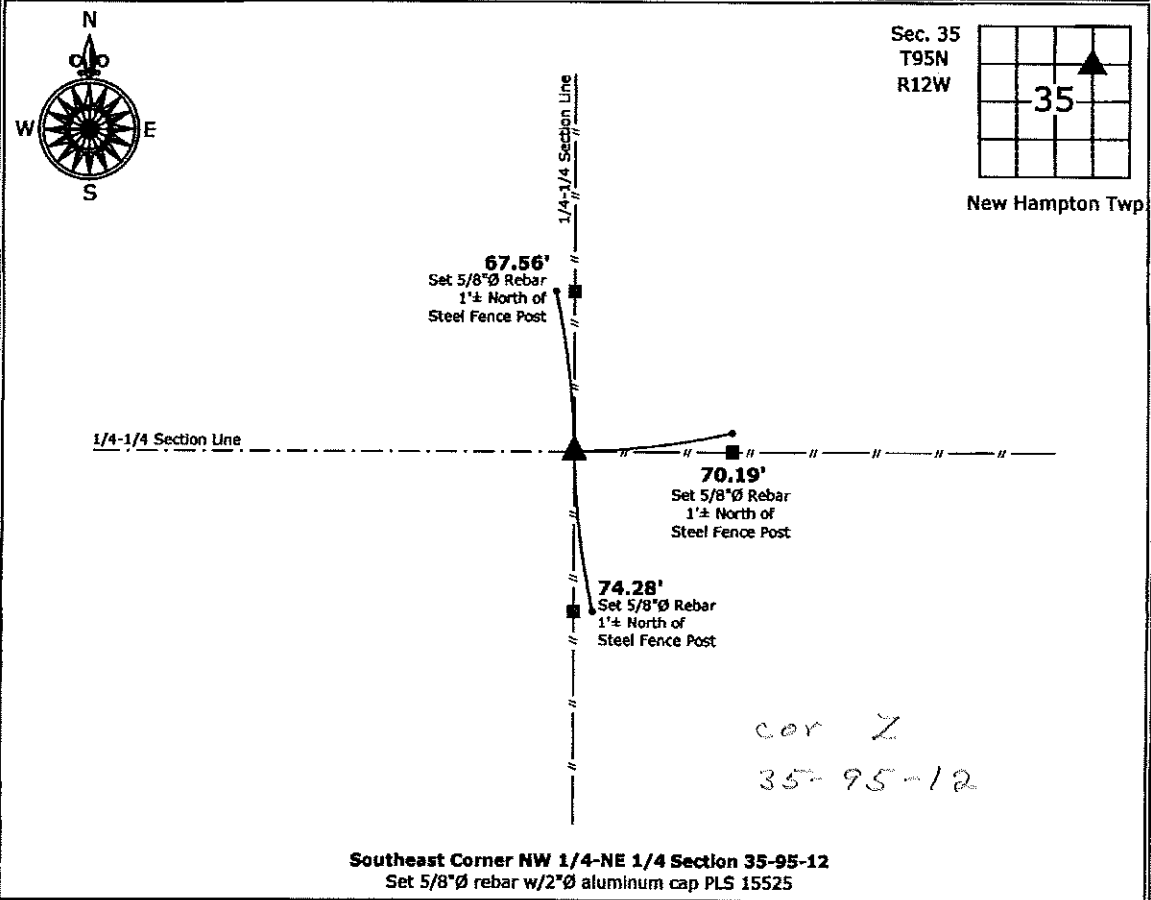
This certificate is being prepared in compliance with Iowa Code Chapter 355.11 because:
 

- There is no certificate on file for this corner.
- There are no longer three valid ties of record.
- There are changes to reference ties of record.
- There is change of monumentation of record.
- To clarify description of record monument (ties).

Monument Description and Remarks:

**Southeast Corner NW 1/4-NE 1/4:** Set 5/8"Ø rebar w/2"Ø aluminum cap PLS 15525 at the intersection of the 1/4-1/4 Section Lines.

**PLAN - VIEW**  
 (Show a minimum of three reference ties to durable physical objects, relevant monuments and physical conditions that will enable recovery of the corner.)



I hereby certify that this land surveying document was prepared and the related survey work was performed by me or under my direct personal supervision and that I am a duly licensed Land Surveyor under the laws of the State of Iowa.

*Paul R. Herold* 5-31-12  
 Paul R. Herold Date:  
 License number 15525

List Corners to be Indexed			
Corners	Section	Twp.	Range
SE-NW-NE	35	95	12